



Birchwood Drive, Hampstead, NW3



020 7402 9494



www.bargets.co.uk

16 Park Road, Regent's Park, London NW1 4SH

Facsimile: 020 7724 7055

Email: enquiries@bargets.co.uk



020 7402 9494

**This detached meticulously designed contemporary house is presented in immaculate decorative order, with a modern specification throughout. It is a compelling modernist house that features a vaulted striking double volume entrance and an exciting light-filled split level reception/entertaining space.**

**The property is ideally located in this award winning sought after gated development directly opposite Hampstead Heath and within close walking distance proximity to Hampstead Village.**

**This property deserves to be visited to appreciate its full appeal.**

#### **ACCOMODATION & AMENITIES**

**RECEPTION ROOM**

**DINING ROOM**

**OFFICE / STUDY**

**3/4 BEDROOMS**

**3 EN SUITE BATHROOMS**

**BATHROOM**

**KITCHEN**

**UTILITY ROOM & STORAGE ROOM**

**GYM**

**BALCONY**

**GARDEN**

**PARKING**

**GARAGE**

**SECURE GATED DEVELOPMENT**

#### **TERMS**

**TENURE - FREEHOLD**

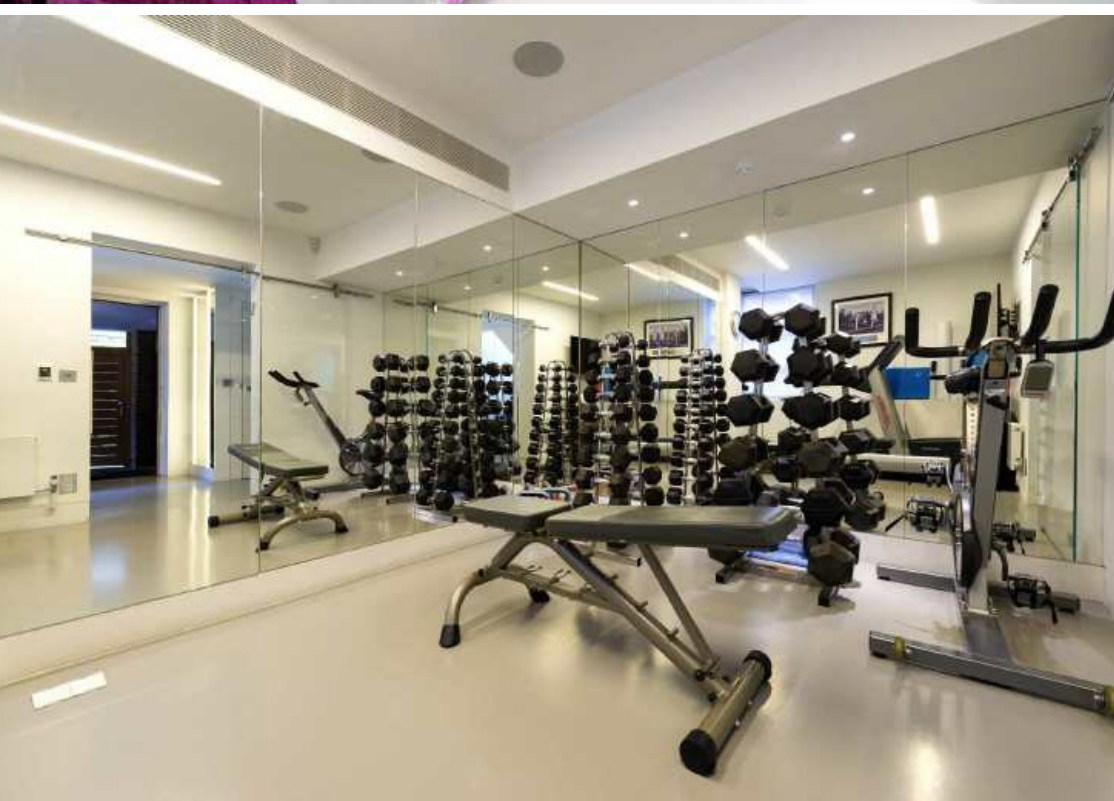
**PRICE - £3,895,000 Subject To Contract**







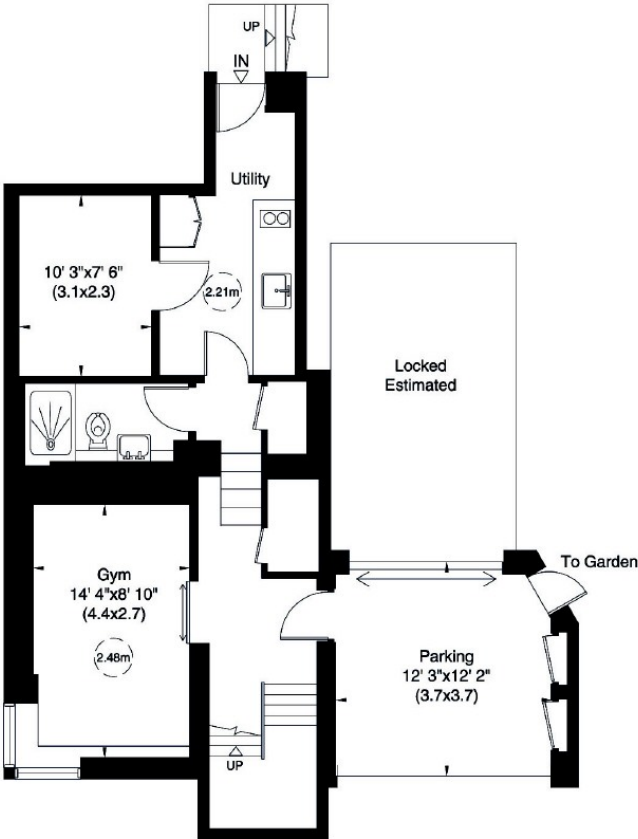




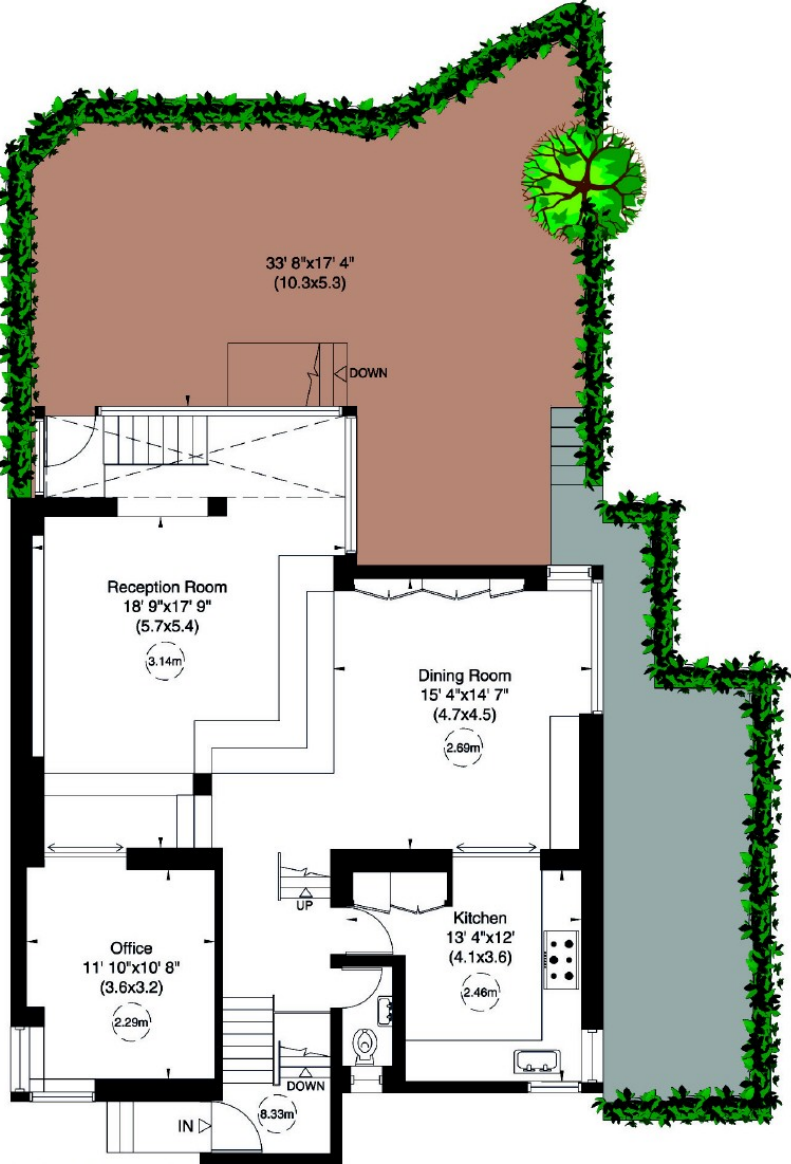


Birchwood Drive, NW3

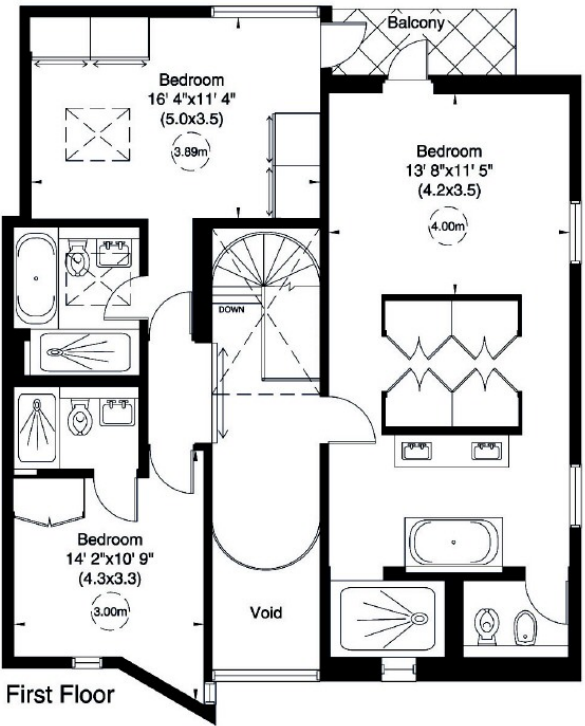
Gross internal area (approx.)  
248 Sq m (2674 Sq ft)  
For identification only, Not to Scale



Lower Ground Floor



Raised Ground Floor



First Floor

Not to scale, for guidance only and must not be relied upon as a statement of fact. All measurements and areas are approximate only (and have been prepared in accordance with the current edition of the RICS Code of Measuring Practice).