

**CLIFTON HILL
ST JOHN'S WOOD
LONDON
NW8**

Bargets Estate Agents

AN EXCEPTIONAL DETACHED PERIOD GRADE II LISTED HOME



An exceptional detached period Grade 11 listed home located in the peaceful cul-de-sac end of Clifton Hill. The property which extends to 3400 sq feet offers a wealth of charm and period features and offers generous living and bedroom space.

Clifton Hill is conveniently situated within close proximity of local amenities and St John's Wood underground (Jubilee Line) as well as the American School in London as well as being close enough to walk to Maida Vale and Little Venice.

The property is offered unfurnished.

• PRINCIPAL BEDROOM SUITE • 4 FURTHER BEDROOMS • 4
BATHROOMS (2 EN-SUITE) • GUEST CLOAKROOM • DOUBLE
RECEPTION ROOM • DINING ROOM • KITCHEN/BREAKFAST ROOM
• TV AREA • OFFICE • GYM • GARDEN

PRICE

£4,600 Per Week
Subject to Contract





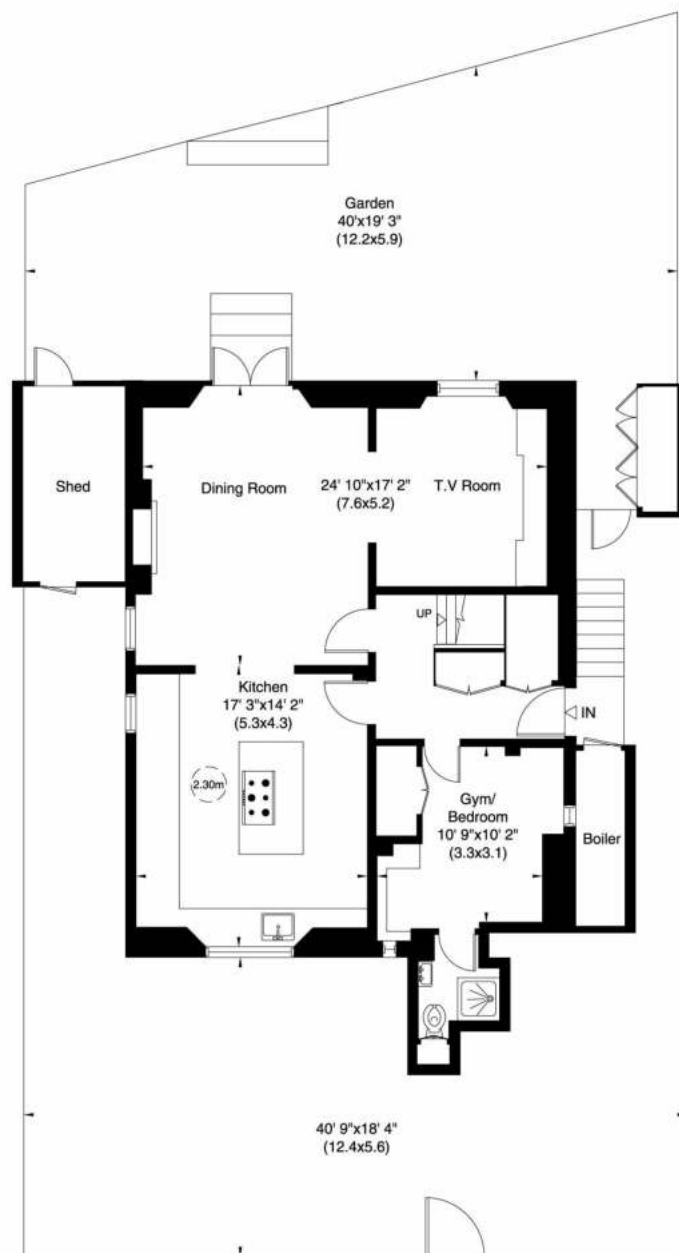










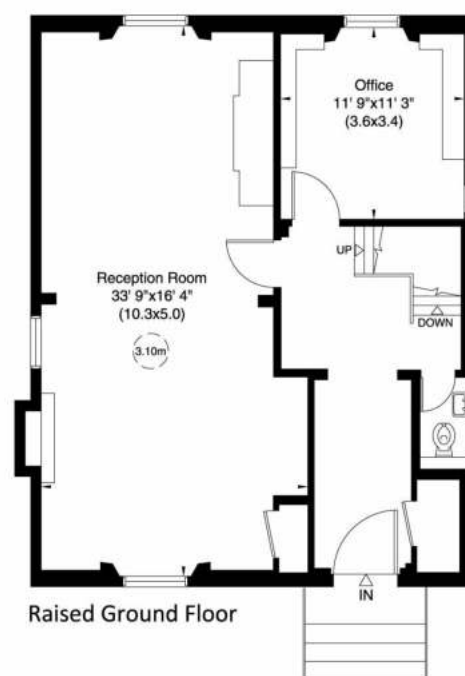


Lower Ground Floor

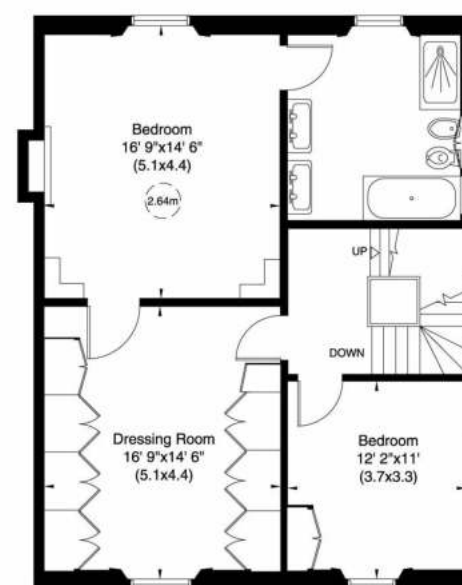
Clifton Hill, NW8

Approximate Gross Internal Area
319 sq m/ 3437 sq ft

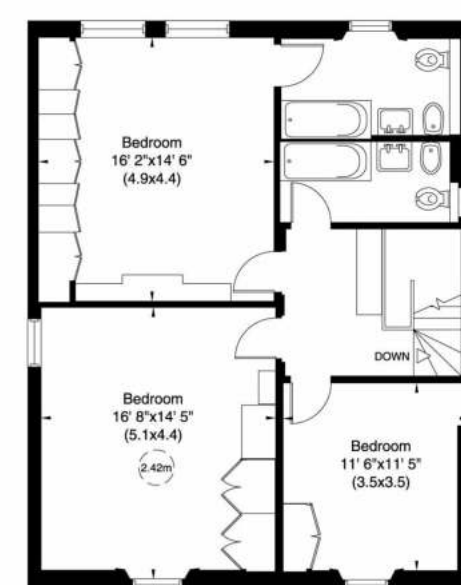
Not to Scale, for identification only



Raised Ground Floor



First Floor



Second Floor

For guidance only and must not be relied upon as a statement of fact.
All measurements and areas are approximate only (and have been prepared in accordance with the current edition of the RICS Code of Measuring Practice).