



## **Mountview Close, Hampstead Garden Suburb, London, NW11**

A modern six bedroom townhouse situated in this gated development adjacent to Golders Hill Park and 0.6 miles from Golders Green Underground Station (Northern Line). The house is set over four floors and is offered on an unfurnished basis. The property also has use of the private communal gym. This house has an open plan kitchen/dining room leading to conservatory, double reception room, five double bedrooms (two with en-suite bathrooms), family bathroom and guest cloakroom. Additional benefits include a study, utility room, paved rear garden, garage and off street parking.

6 Bedrooms : Bathroom : 2 En Suite Bathrooms : Guest WC : Reception Room : Dining Room : Kitchen : Study : Conservatory : Utility Room : Balcony : Garden : Garage : Communal Gardens : Communal Gym : Porter : CCTV : Video Entry : EPC Rating C

**£2,095 pw / £9,078 pm Subject To Contract**

















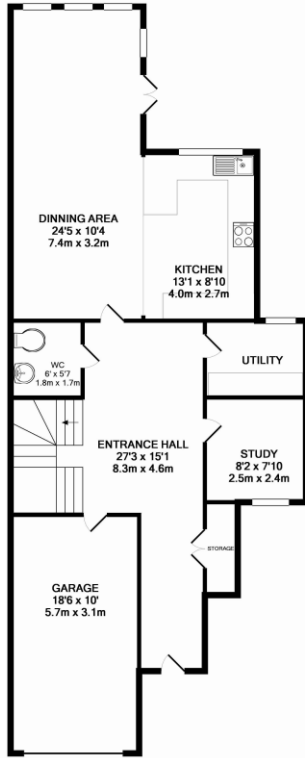




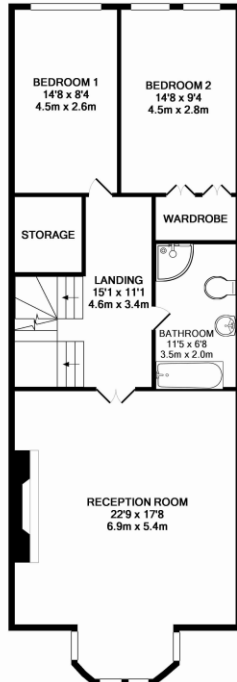




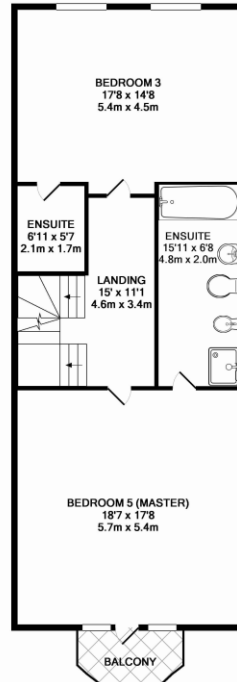




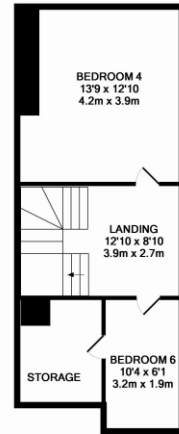
GROUND FLOOR  
APPROX. FLOOR  
AREA 974 SQ.FT.  
(90.5 SQ.M.)



1ST FLOOR  
APPROX. FLOOR  
AREA 885 SQ.FT.  
(82.2 SQ.M.)



2ND FLOOR  
APPROX. FLOOR  
AREA 853 SQ.FT.  
(79.3 SQ.M.)



3RD FLOOR  
APPROX. FLOOR  
AREA 390 SQ.FT.  
(36.2 SQ.M.)

MOUNTVIEW CLOSE LONDON NW11 7HG  
TOTAL APPROX. FLOOR AREA 3102 SQ.FT. (288.2 SQ.M.)

Whilst every attempt has been made to ensure the accuracy of the floor plan contained here, measurements of doors, windows, rooms and any other items are approximate and no responsibility is taken for any error, omission, or mis-statement. This plan is for illustrative purposes only and should be used as such by any prospective purchaser. The services, systems and appliances shown have not been tested and no guarantee as to their operability or efficiency can be given.  
Made with Metapix ©2011