

**ARKWRIGHT ROAD  
HAMPSTEAD  
LONDON  
NW3**

**Bargets Estate Agents**



# A SUPERB AND SUBSTANTIAL DOUBLE FRONTED VICTORIAN FAMILY RESIDENCE





A superb and substantial double fronted Victorian family residence, with gated off street parking for multiple vehicles, a landscaped well-manicured tiered rear garden and additionally benefitting from a self-contained one/two bedroom guest annexe/coach house.

This exceptional property enjoys a selection of generous proportioned entertaining spaces, including a double reception room, family room, spacious kitchen breakfast room and drawing room with a connecting study/library both accessing a terraced area with private views overlooking the rear garden. Offering flexible accommodation throughout, there are six/seven bedrooms across the two properties including a principal suite comprising bedroom, en-suite bathroom and a dressing room, with five further bathroom shower rooms.

Occupying an elevated and prominent position, Arkwright Road is conveniently located within 450 metres of Hampstead Village and its various boutiques, shops, cafes and underground station (Northern Line) and within 600 metres of the Finchley Road shops and underground (Metropolitan and Jubilee Lines).

**FREEHOLD**

**PRICE**

**£5,950,000 Subject to Contract**

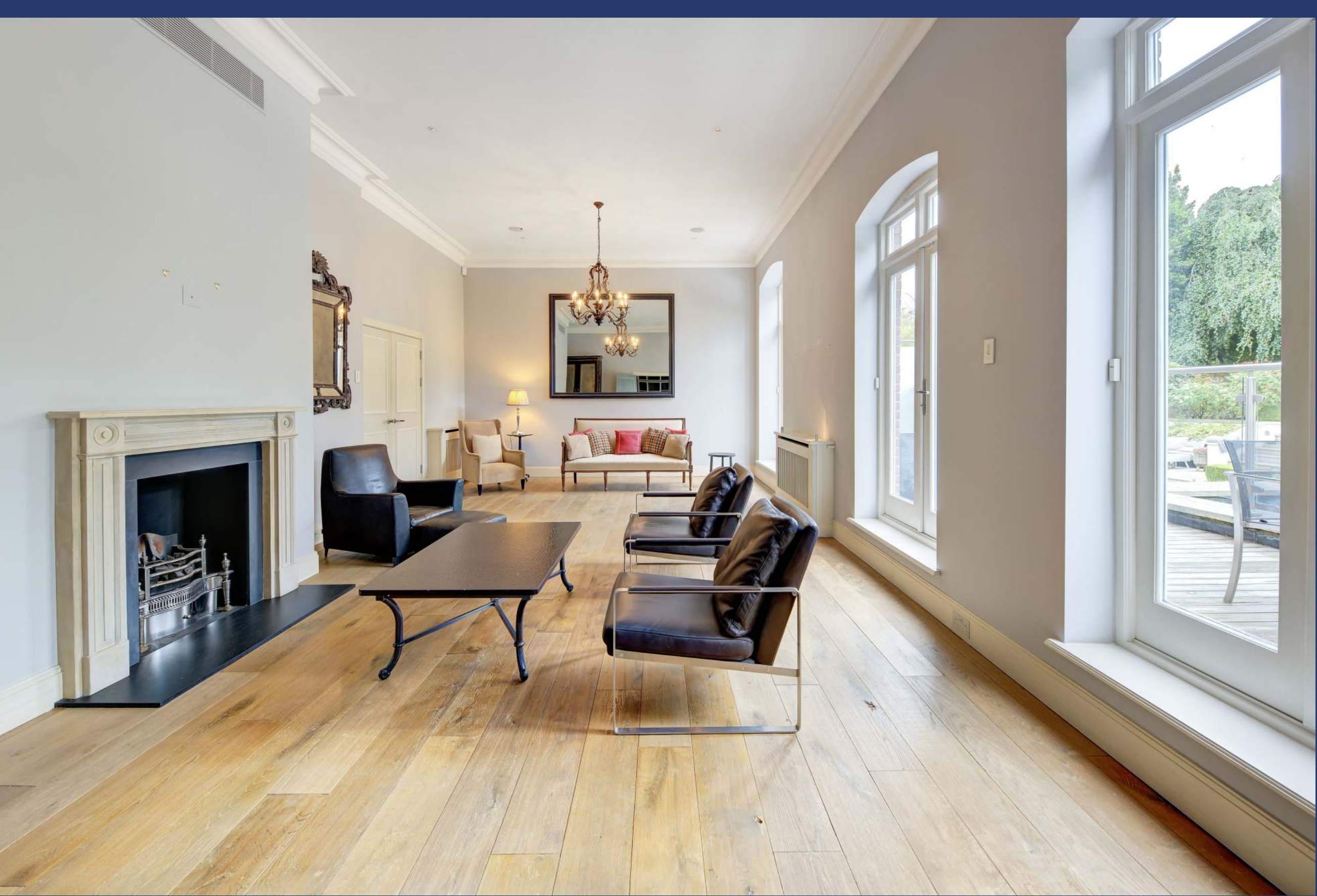








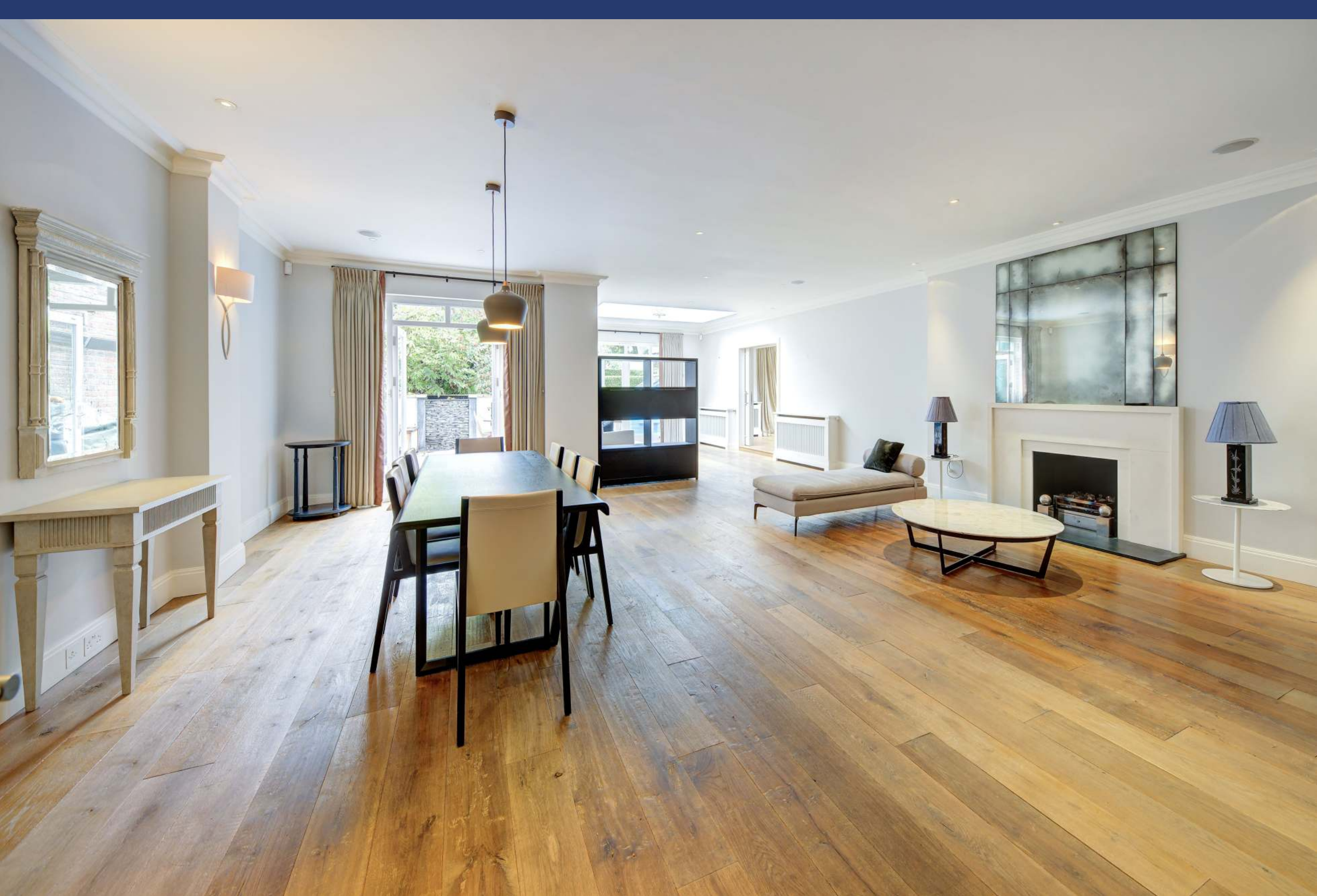


























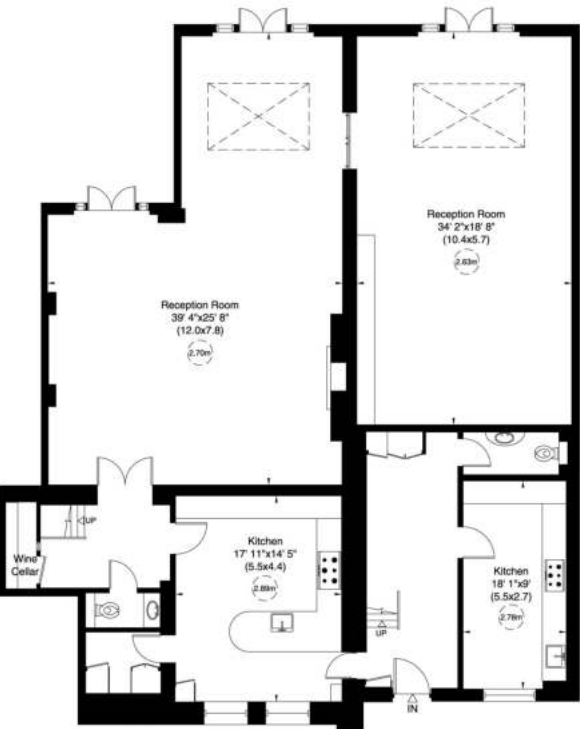




34B & C, Arkwright Road, NW3

Approximate Gross Internal Area  
535 sq m/ 5756 sq ft Including Under 1.5m  
523 sq m/ 5629 sq ft Excluding Under 1.5m

Not to Scale, for identification only



For guidance only and must not be relied upon as a statement of fact.  
All measurements and areas are approximate only (and have been prepared in accordance with the current edition of the RICS Code of Measuring Practice).



34B & C, Arkwright Road, NW3

Site Plan  
0.2028696 Acre (approx.)  
Not to Scale, for identification only

