



Cumberland Terrace, Regent's Park, London, NW1



020 7402 9494

**An extremely impressive and beautifully presented substantial Grade 1 Listed Nash Residence (571.35 sq m/6,150 sq ft).**

**This wonderful Nash Residence is in immaculate condition throughout with a lift serving all floors, air conditioning throughout with a private courtyard and roof terrace.**

**The property offers excellent entertaining spaces with uninterrupted views of Regent's Park. The house also benefits from private off street parking and a double garage and access to the communal gardens.**

**Principal Bedroom with En-Suite Dressing Room, Shower Room & Bathroom, 5 Further Bedrooms, 2 En-Suite Bathrooms, 3 En-Suite Shower Rooms, 2 Reception Rooms, Drawing Room, Dining Room, Kitchen/Breakfast Room, Sitting Room, Gymnasium, Utility Room, Guest Cloakroom.**

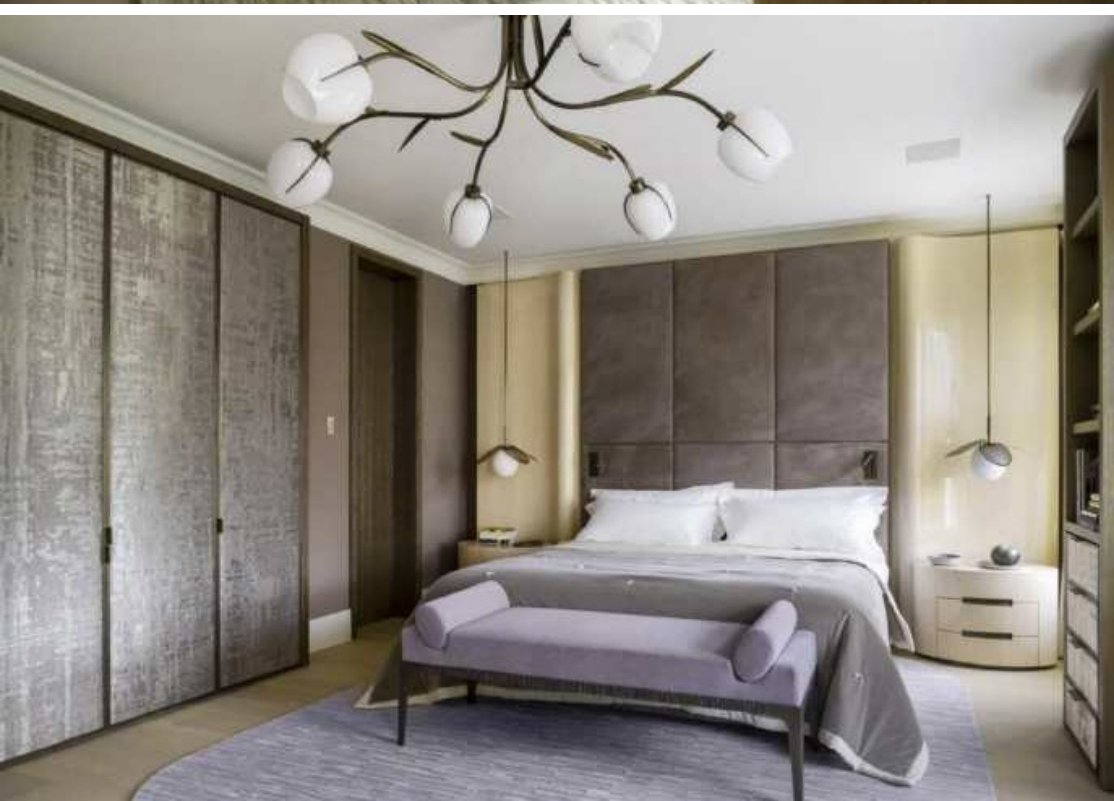
**Double Garage, Lift, Air Conditioning throughout, Roof Terrace, Courtyard, Storage Vaults, Wine Cellar.**

**Freehold**

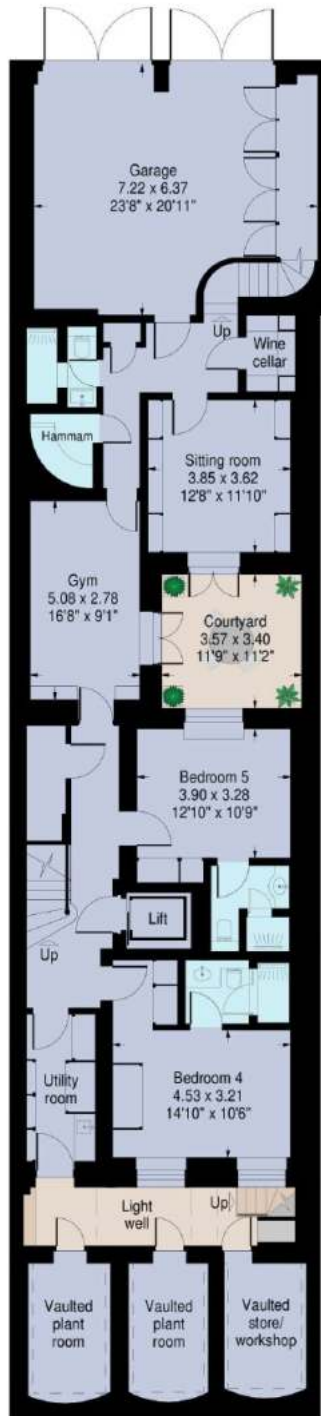
**£25,000,000**

**Subject to Contract**

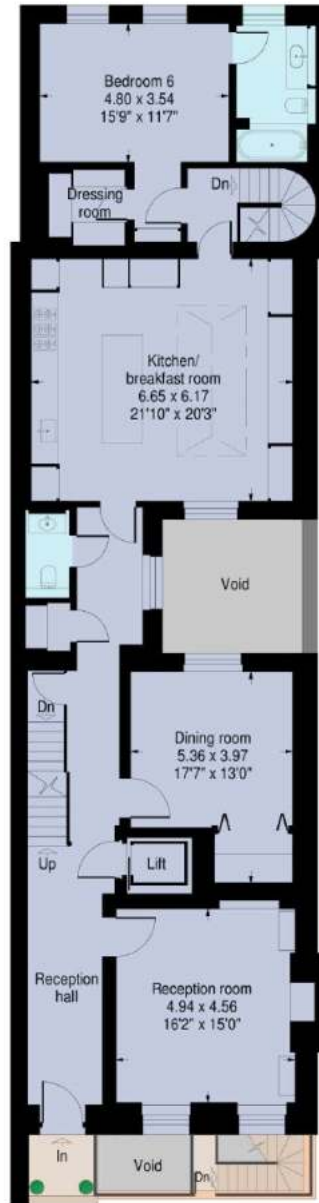








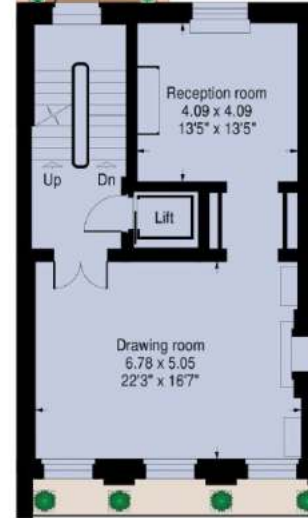
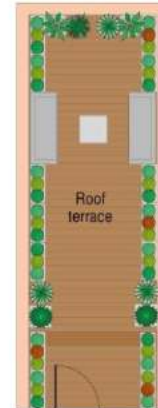
Lower ground floor



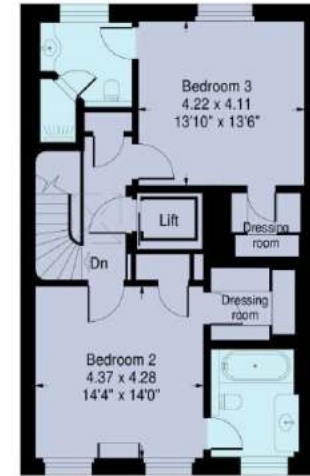
Ground floor

## Cumberland Terrace, London NW1

Gross internal area (approx):  
572.3 sq.m. (6160 sq.ft.) including vaults  
Vaults - 22.0 sq.m. (236 sq.ft.)  
For identification purposes only. Not to scale.  
ProplanUK e



First floor



Third floor



Second floor