



Gilling Court, Belsize Grove, London, NW3



020 7402 9494



www.bargets.co.uk

16 Park Road, Regent's Park, London NW1 4SH  
Facsimile: 020 7724 7055  
Email: enquiries@bargets.co.uk



020 7402 9494

**A bright & spacious well-presented one bedroom apartment for sale, positioned on the ground floor of an attractive & popular Art Deco style purpose built block in the heart of Belsize Park.**

**Gilling Court is located within walking distance from the boutique, shops, restaurants of England's Lane, Primrose. It is moments walk from Haverstock Hill and Belsize Park (Northern Line) Underground Station.**

---

#### ACCOMMODATION

- RECEPTION ROOM
- DOUBLE BEDROOM
- BATHROOM
- KITCHEN
- PORTER
- COMMUNAL GARDENS

#### TENURE

**Leasehold - Share of Freehold**

#### PRICE

**Guide price £395,000 subject to contract**

**Service Charge £4,000 Per Annum Approximately**

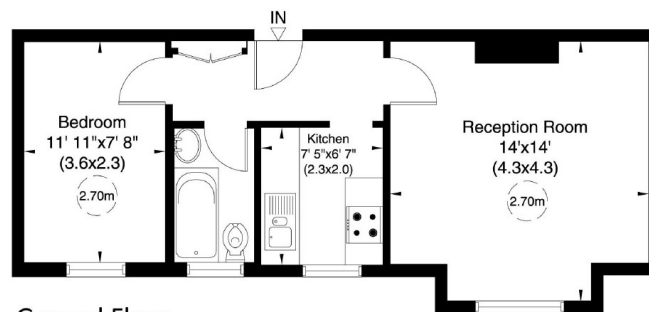


## 2 Gilling Court, Belsize Grove, NW3

Approximate Gross Internal Area

39 sq m/ 422 sq ft

Not to Scale, for identification only



Ground Floor

For guidance only and must not be relied upon as a statement of fact.

All measurements and areas are approximate only (and have been prepared in accordance with the current edition of the RICS Code of Measuring Practice).

