



Greenaway Gardens, Hampstead, London, NW3



020 7402 9494

An exceptional residence prominently located on one of Hampstead's most sought after roads. Set back behind a sweeping carriage driveway and arranged over three floors, retaining a wealth of period features with stunning interiors. Extending to approximately 6,172 sq ft of living accommodation. The property comprises a spacious hallway, a large double reception room, a dining room, a second double reception room/family room, a grand kitchen, a utility room, two downstairs cloakrooms, a double garage, principal bedroom with en-suite and dressing room, six additional bedrooms and four bathrooms. Further benefits include a large carriage driveway and extensive rear gardens.

Greenaway Gardens runs north to south between Oakhill Avenue and Frogal Lane on the west side of Hampstead Village. The property is located within easy walking distance of multiple transport links just 0.6 miles (965m) from Hampstead Underground Station (Northern Line), 0.5 miles (804m) from Finchley Road & Frogal Station (London Overground Service) and 0.7 miles (1,126m) from Finchley Road Underground Station (Jubilee & Metropolitan Lines) whilst numerous buses provide easy access to central London from Finchley Road. Hampstead is renowned as one of London's most desirable locations benefitting from a vibrant village atmosphere, Hampstead Heath and a disproportionately large number of outstanding schools for all ages.

ACCOMMODATION & AMENITIES

- 3 Reception Rooms
- 2 Dining Rooms
- 2 Kitchens
- 6 Bedrooms
- Bedroom 7 / Reception Room
- Bathroom
- 2 Shower Rooms
- En Suite Bathroom
- En Suite Shower Room
- Guest W.C's
- Utility Room
- Garden
- Garage
- Off Street Parking

PRICE

£9,000 Per Week, Subject to Contract



Greenway Gardens
 Approximate gross internal area
 873 sqm/9172 sqft

Mr. Ch. Ceiling height



328 sq ft
 Lower Ground Floor

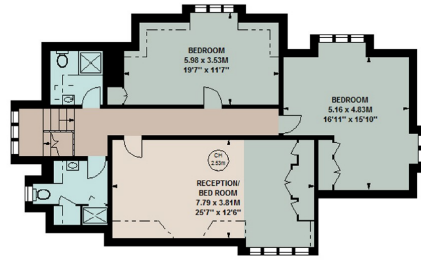
2781 sq ft
 Ground Floor

The floor plan is not to scale and measurements and areas shown are approximate and therefore should be used for illustrative purposes only. The plan has been prepared in accordance with the RICS Code of Measuring Practice and whilst we have confidence in the information produced, it must not be relied on. Please be aware of particular requirements you should carry out or commission your own inspectors of the property.
 Copyright of Key Care.

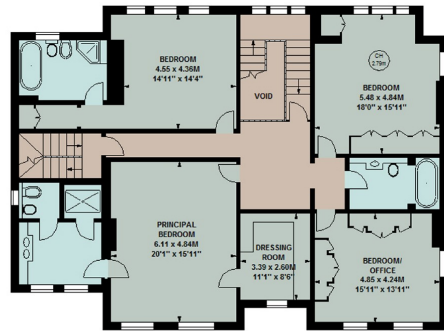


Greenaway Gardens
 Approximate gross internal area
 873 sq.m/9172 sq.ft

Mr.
 Dr. Carington



1104 sq ft
Second Floor



1949 sq ft
First Floor

This floor plan is not to scale and measurements and areas shown are approximate and therefore should be used for indicative purposes only.
 The plan has been prepared in accordance with the RICS Code of Measuring Practice and while we have confidence in the information produced, it must not be relied on.
 If there is any aspect of particular importance, you should query our commission your own specialist of the property.
 Copyright of the Client.

