



**St Ann's Terrace, St John's Wood, NW8**



020 7402 9494

A Grade II listed period house comprising of 2,264 sq ft. The house is presented in excellent decorative condition throughout and features well planned accommodation with a walled rear garden and off street parking for 1 car. St Ann's Terrace is within 50 yards of St John's Wood High Street with it's numerous shops, fashion boutiques, restaurants and multiple transport facilities and is located within a 5 minute walk of The American School of London.

Available unfurnished.

### **ACCOMMODATION**

**4 BEDROOMS, 3 BATHROOMS, GUEST CLOAKROOM, KITCHEN/FAMILY ROOM, DOUBLE RECEPTION ROOM**

### **AMENITIES**

**UTILITY ROOM, GARDEN, PARKING**

### **TERMS**

**PRICE £2,750 Per Week subject to contract.**





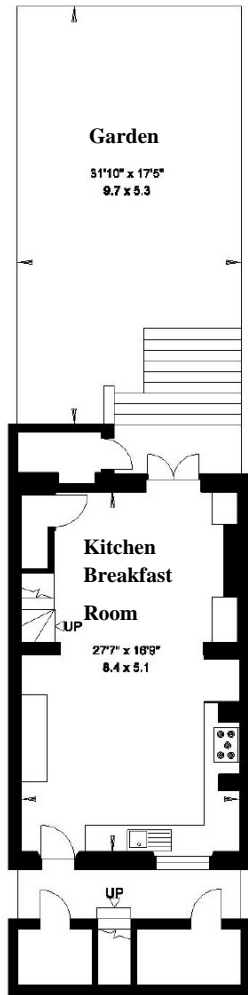
**BARGETS**  
ESTATE AGENTS

020 7402 9494

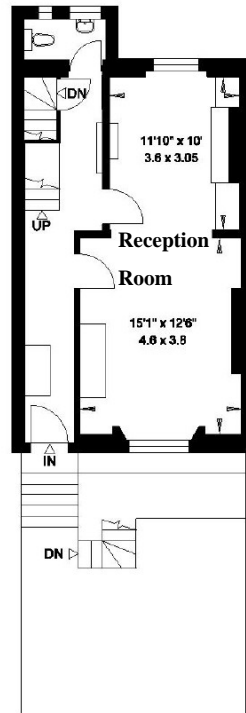


**19 ST ANNE'S TERRACE  
LONDON NW8**

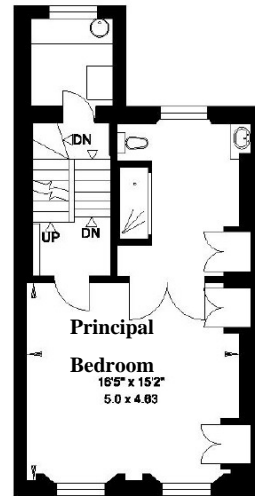
Gross Internal Area = 218 sq. metres  
2348 sq. feet  
(Excluding Store & Vaults)



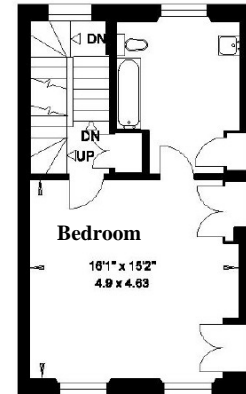
**LOWER GROUND FLOOR**



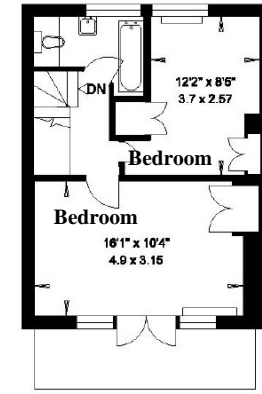
**GROUND FLOOR**



**FIRST FLOOR**



**SECOND FLOOR**



**THIRD FLOOR**