



Green Close, Hampstead Garden Suburb, NW11



020 7402 9494

www.bargets.co.uk

16 Park Road, Regent's Park, London NW1 4SH
Facsimile: 020 7724 7055
Email: enquiries@bargets.co.uk



020 7402 9494

A substantial double fronted detached family house set in a brilliant plot of approximately 0.53 acres overlooking the Heath Extension. The property extends to 6,262 sq. ft. including a separate self-contained one bedroom annex, as well as excellent principal accommodation. This substantial family home is located on one of the most sought after roads in Hampstead Garden Suburb. The excellent family accommodation provides a total of 8 bedrooms and 6 bathrooms, 5 of which are en suite. The well-proportioned living accommodation benefits from a spacious triple aspect drawing room with floor to ceiling windows to the side aspect, a large dining room, separate sitting room and kitchen opening to the breakfast room. There is a separate self-contained one bedroom annex and there is a gated driveway providing off street parking for several vehicles that in turn leads to the double garage.

Situated immediately opposite the Heath Extension, on the highly desirable South Side of Hampstead Garden Suburb, which is in close proximity to a considerable number of excellent Schools / Nurseries, within walking distance to the local amenities of both the Market Place and Golders Green and the underground station (Northern Line).

ACCOMMODATION

RECEPTION HALL

7 BEDROOMS

6 BATHROOMS (5 EN-SUITE)

DRAWING ROOM

DINING ROOM

SITTING ROOM

KITCHEN/BREAKFAST ROOM

UTILITY ROOM

2 BALCONY'S

INTEGRAL GARAGE

GATED DRIVEWAY

SELF-CONTAINED 1 BEDROOM ANNEX

TERMS

TENURE

Freehold

PRICE

Price £7,750,000 subject to contract



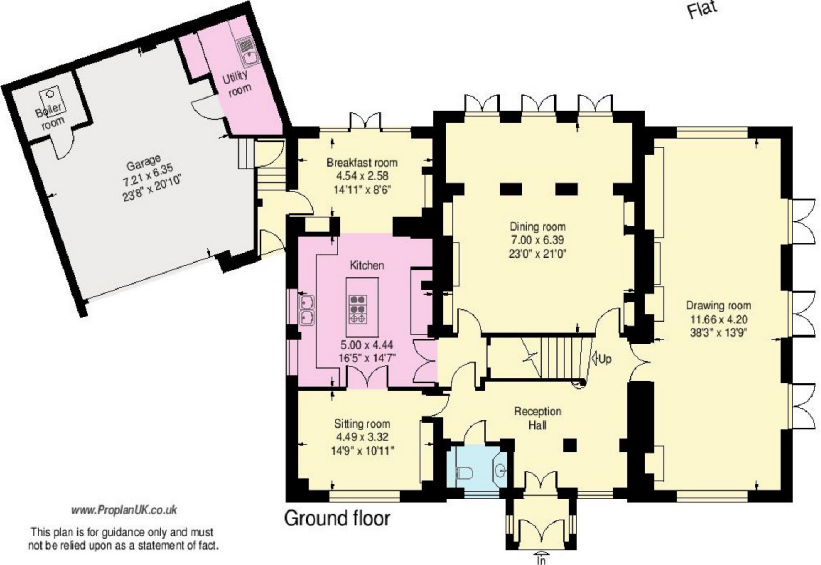


Green Close, London NW11

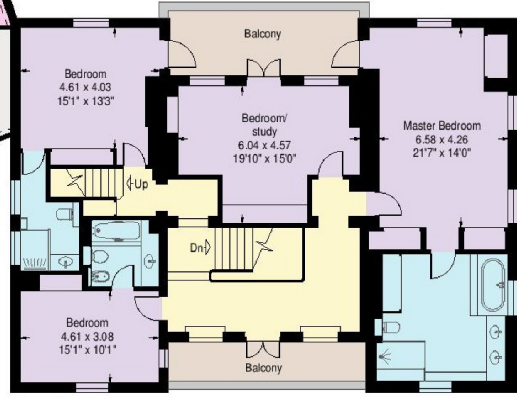
Approximate Gross Internal Area:
Total - 581.7 sq.mts. / 6262 sq.ft.
(Including garage, flat and reduced height area below 1.5m - denoted with dashed line)
Flat - 50.4 sq.mts. / 543 sq.ft.
Reduced height area - 7.9 sq.mts. / 85 sq.ft.



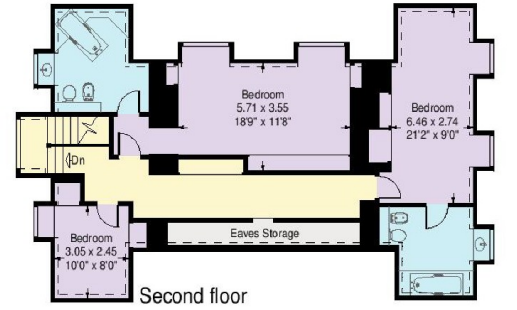
Flat



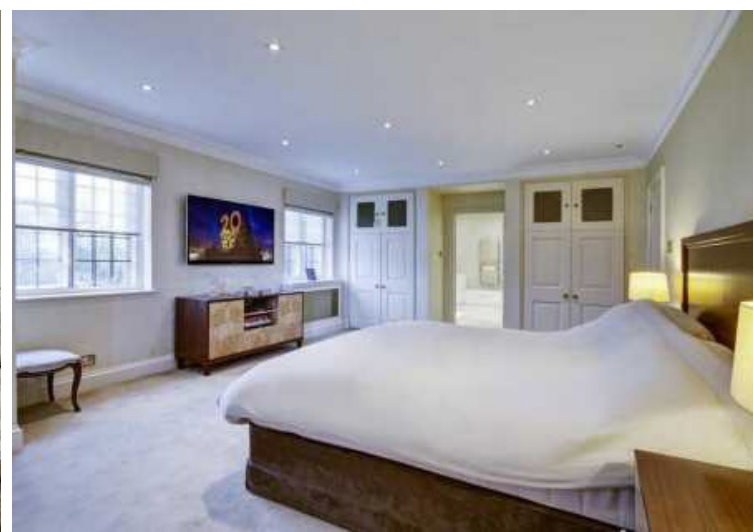
Ground floor



First floor



Second floor



www.ProplanUK.co.uk

This plan is for guidance only and must not be relied upon as a statement of fact.

Green Close, London NW11

Approximate site area: 0.53 acres



www.ProylandUK.co.uk
This plan is for guidance only and must not be used as a statement of fact.

