





EXQUISITE GARDEN SQUARE IN THE HEART OF KNIGHTSBRIDGE

**Ennismore Gardens,
London, SW7**

Asking Price: £5,999,950 -
Share of Freehold

Grade II Listed

- Georgian garden square
- Heart of Knightsbridge
- Split level living
- Moments from Hyde Park
- 5 bedrooms

We are delighted to present this impeccable 3,455 square feet (321m²) property, a tri-level epitome of sophistication in a prestigious location. Experience luxury living across its ground, lower ground, and first floor.

Description

Discover unparalleled garden square living in this exquisite 3,455 square feet (321m²) residence, spanning three levels of refined elegance. Each of the three appointed bedrooms boasts an en-suite bathroom, offering private sanctuaries of comfort. The home's versatility shines with a fourth bedroom that seamlessly transforms into a reception room and a fifth adaptable as a study, catering to your evolving lifestyle needs. The grandeur of the main reception room sets the stage for memorable entertaining, complemented by a dining room that invites both intimate gatherings and grand celebrations. The gourmet kitchen is a culinary artist's dream, blending style with functionality. For relaxation, the lounge offers a tranquil retreat, while the courtyard provides a serene outdoor escape. This property also includes access to tranquil residents' gardens, offering a lush respite from city life. With leasehold tenure and a share of the freehold, this home is more than a residence; it's a statement of luxury living.

Situation

Situated in a distinguished quarter, this remarkable tri-level home enjoys a coveted position that blends tranquillity with urban convenience. Step outside to the serene residents' gardens, a peaceful oasis amidst the city's hustle. The property is moments away from fine dining, cultural landmarks, and upscale boutiques, ensuring the best of city living is at your doorstep. This address perfectly balances historical charm with modern amenities, offering an unrivalled urban sanctuary for discerning residents.

Council Tax

Band H

Local Authority

Westminster City

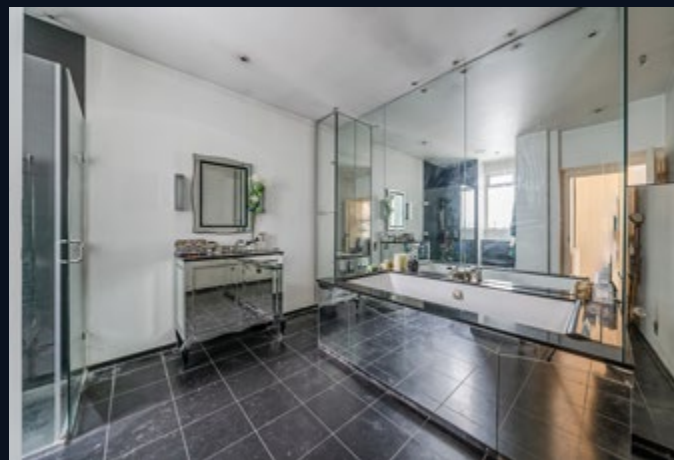
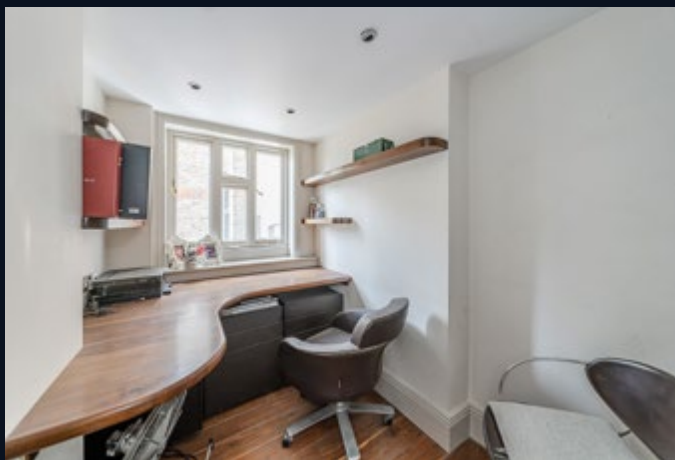
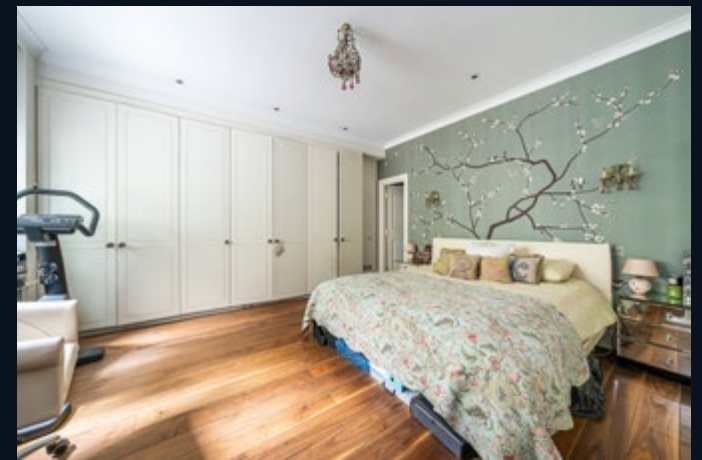
Tenure

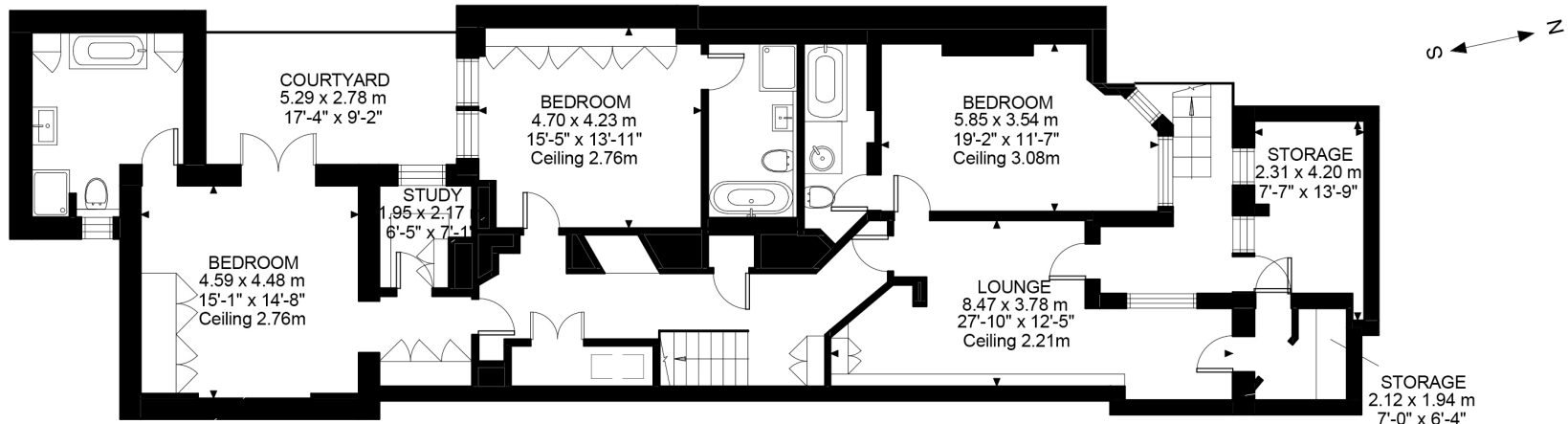
Share of Freehold, with an underlying lease length of 976 years.

Service Charge

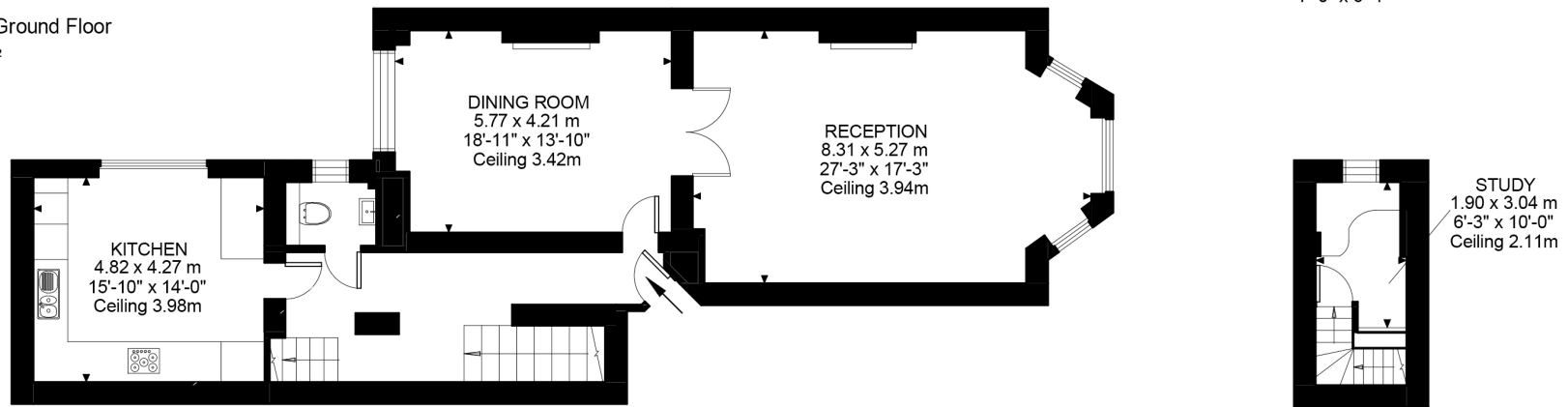
Approx. £10,000 - £12,000 per year.



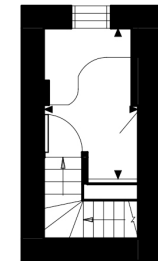




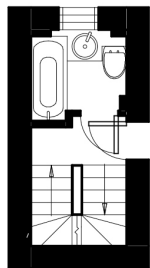
Lower Ground Floor
1739 ft²



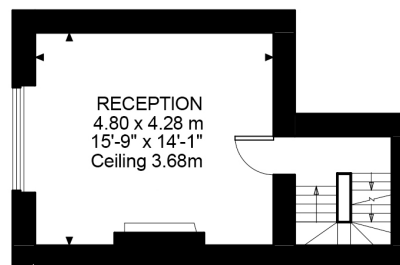
Ground Floor
1253 ft²



Second Floor
88 ft²



Entrance To First Floor
92 ft²



First Floor
283 ft²

Illustration for identification purposes only. Not to scale.
Floor Plan Drawn According To RICS Guidelines.

Ennismore Gardens, SW7
Approximate Gross Internal Area
321.01 SQ.M / 3455 SQ.FT