



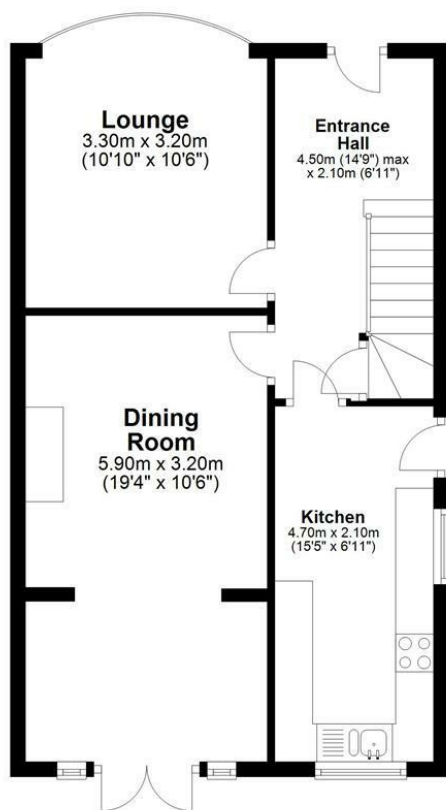
3 Bed  
House - Detached  
located in

Offers over £305,000



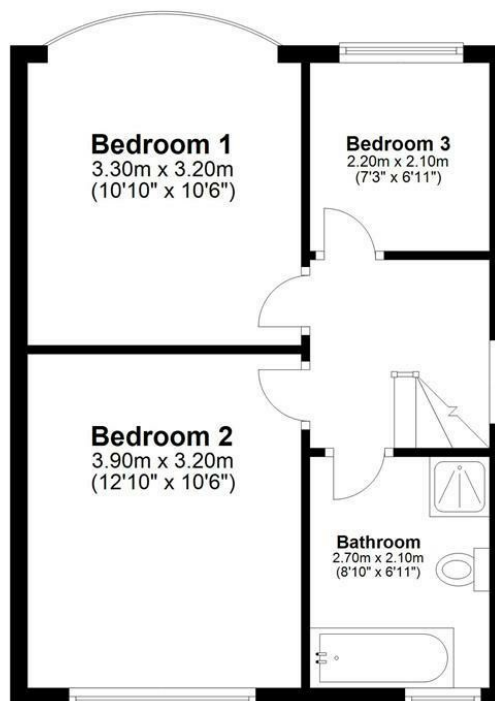
## Ground Floor

Approx. 50.6 sq. metres (544.5sq. feet)



## First Floor

Appro. 39.8 sq. metres (428.2 sq. feet)



Total area: approx. 90.4 sq. metres (972.8 sq. feet)

Please note this floor plan is for marketing purposes only.  
Whilst every attempt has been made to ensure the accuracy of the floor plan contained here, measurements of doors, windows, rooms and any other items are approximate and no responsibility is taken for any error, omission, or misstatement.  
Plan produced using PlanUp.

## DIRECTIONS

### CONTACT

16 The Triangle  
Nottingham  
Nottinghamshire  
NG2 1AE

E: [sales@trentestateagents.co.uk](mailto:sales@trentestateagents.co.uk)  
T: 0333 3444 035  
[www.trentestateagents.co.uk](http://www.trentestateagents.co.uk)

