



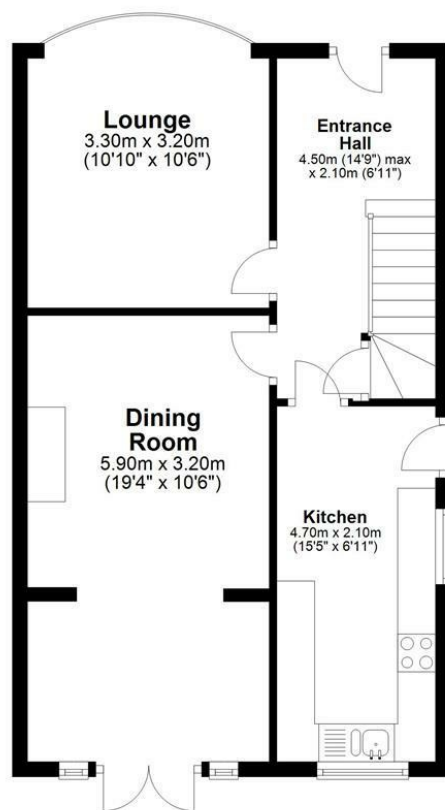
3 Bed
House - Detached
located in

Offers over £300,000



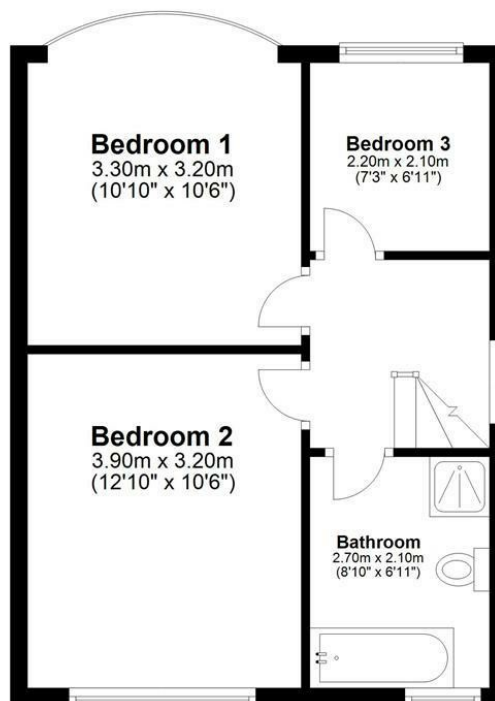
Ground Floor

Approx. 50.6 sq. metres (544.5sq. feet)



First Floor

Appro. 39.8 sq. metres (428.2 sq. feet)



Total area: approx. 90.4 sq. metres (972.8 sq. feet)

Please note this floor plan is for marketing purposes only.
Whilst every attempt has been made to ensure the accuracy of the floor plan contained here, measurements of doors, windows, rooms and any other items are approximate and no responsibility is taken for any error, omission, or misstatement.
Plan produced using PlanUp.

DIRECTIONS

CONTACT

16 The Triangle
Nottingham
Nottinghamshire
NG2 1AE

E: sales@trentestateagents.co.uk
T: 0333 3444 035
www.trentestateagents.co.uk

