



Foxglove House, Carr Lane, Sutton-On-The-Forest, York, YO61 1EB

£725,000



Foxglove House, Carr Lane, Sutton-On-The-Forest, York, YO61 1EB
£725,000

FOXGLOVE HOUSE IS CURRENTLY UNDER CONSTRUCTION AND DUE TO BE COMPLETED SEPTEMBER 2024, A HIGH QUALITY BRAND NEW 4 BEDROOMED DETACHED FAMILY HOME, ENJOYING A DELIGHTFUL POSITION SET WITHIN THIS SMALL EXCLUSIVE DEVELOPMENT IN THIS WELL REGARDED VILLAGE JUST 8 MILES NORTH OF YORK CITY CENTRE. BUILT BY THE AWARD WINNING LOCAL HOUSE BUILDER V&A HOMES RENOWNED FOR THEIR DESIGN AND BUILDING OF QUALITY HOMES TO AN EXCELLENT SPECIFICATION MEETING TODAY'S HIGH STANDARDS.



Description

With a 10 Year Warranty, Air Source Heating and Double Glazing; Reception Hall, Cloakroom/WC, Sitting Room, Open Plan Kitchen/ Breakfast Dining Room, Utility Room, Study/Snug; First Floor - Landing, Master Bedroom with Ensuite Shower Room, 3 Further Bedrooms, House Bathroom; Turfed Gardens, Allocated off Street Parking for Two Vehicles, Double Garage and EV Charging Point.

Ground Floor:-
Reception Hall
Cloakroom/WC
Living Room - 4.89 x 3.84 (16'4 x 12'6)
Open Plan - Kitchen/Breakfast Dining Room – 6.31 x 3.87 (20'7 x 12'7)
Utility Room – 2.5 x 1.9 (8'2 x 6'2)
Study/Snug – 3.16 x 2.56 – (10'4 x 8'4)

First Floor Master Bedroom - 4.92 x 3.83 – (16'2 x 12'7)
En-suite Shower Room/WC
Bedroom 2 - 3.65 x 3.4 (11'10 x 11'2)
Bedroom 3 - 4.45 x 2.56 (14'6 x 8'6)
Bedroom 4 - 3.15 x 2.56 (10'4 x 8'4)
House Bathroom

Detached Double Garage size - 5.78 x 5.58 (18'10 x 18'3)
Landscaped Gardens

LOCATION - Sutton on the Forest lies approximately 9 miles north of York, a pretty former estate village which is still dominated by Sutton Hall at its centre. Many of the houses date from the 1700s and front the wide village street and grassed greens. The village has a reputable primary school, a well-established popular preschool play group/toddler group and bus service, with more extensive facilities available within the Georgian market town of Easingwold some 6 miles away. Sutton on the Forest has long been regarded as a particularly sought after village location.

POSTCODE - YO61 1EB - TENURE - Freehold - SERVICES - Mains water, electricity and drainage, with air source heat pump - underfloor heating to the ground floor - radiators to the first floor.

VIEWINGS - Strictly by prior appointment through the sales agents, Churchills of Easingwold Tel: 01347 822800 Email: easingwold@churchillsyork.com.

DIRECTIONS From our central Easingwold office, proceed along Long Street, and bear left onto Stillington Road. Continue along the road to Stillington, and turn right signposted Sutton on the Forest. At the mini roundabout by the Village Hall, proceed a short distance whereupon Foxglove House is positioned on the left hand side, identified by the Churchills For Sale board.

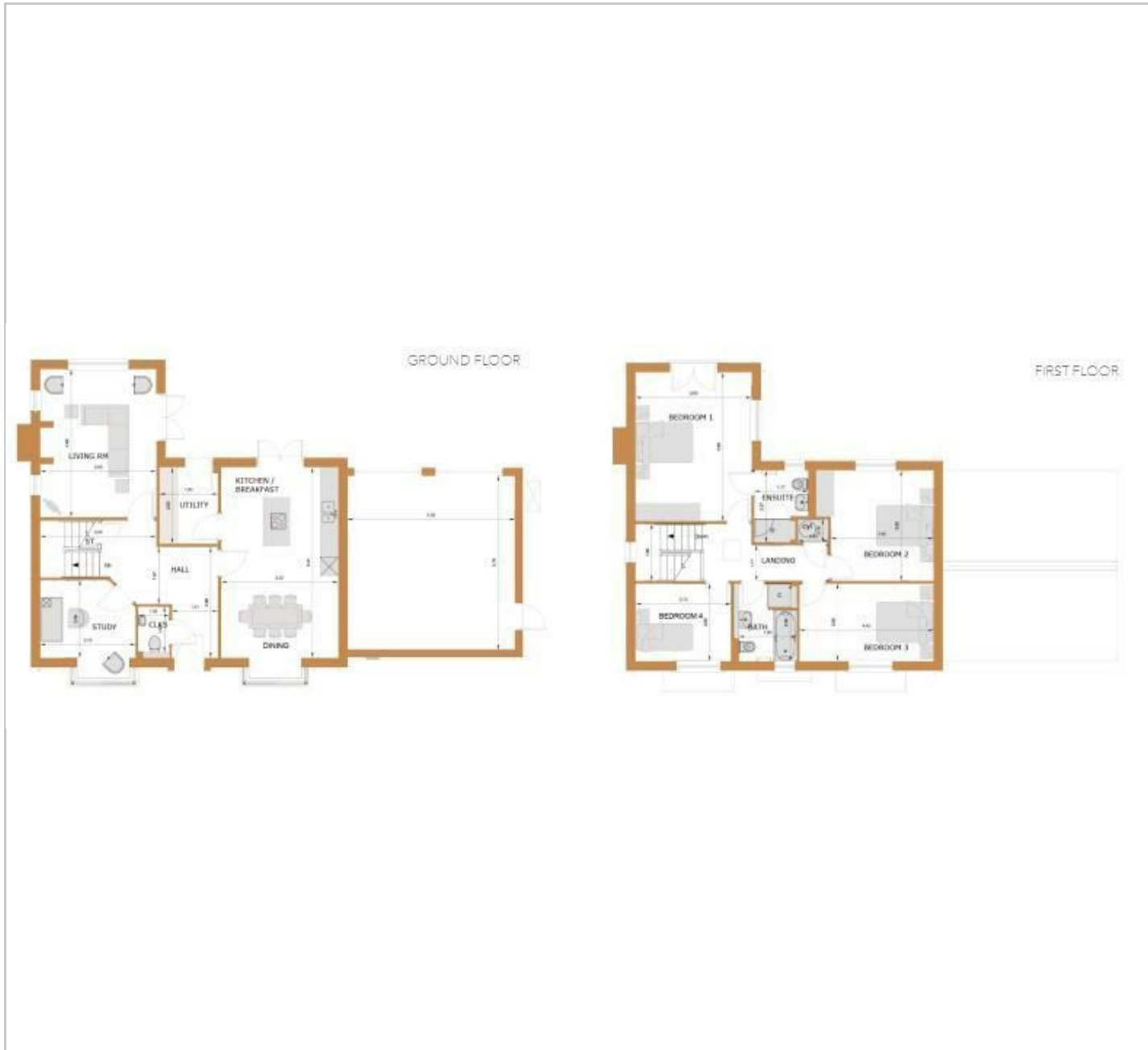
Features

- COMPLETING SEPTEMBER 2024
- 4 BEDROOMED DETACHED
- LAST 3 REMAINING
- SMALL EXCLUSIVE DEVELOPMENT
- FAMILY HOME
- EXCELLENT SPECIFICATION
- WELL REGARDED VILLAGE
- 10 YEAR WARRANTY
- 8 MILES NORTH OF YORK
- LOCAL AWARD WINNING DEVELOPER

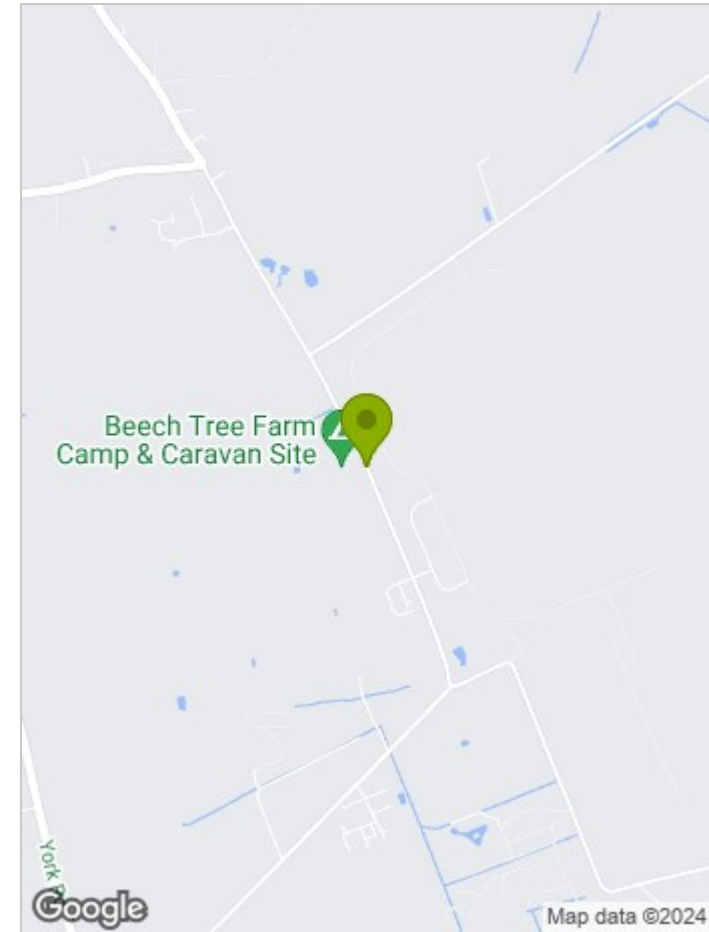


- 1 Mulberry House, Carr Lane, Sutton-on-the-Forest, YO61 1EB - UNDER OFFER
- 2 Dove Cottage, Carr Lane, Sutton-on-the-Forest, YO61 1EB - RESERVED
- 3 Hazel Cottage, Carr Lane, Sutton-on-the-Forest, YO61 1EB - AVAILABLE
- 4 Ivy Cottage, Carr Lane, Sutton-on-the-Forest, YO61 1EB - AVAILABLE
- 5 Foxglove House, Carr Lane, Sutton-on-the-Forest, YO61 1EB - AVAILABLE

FLOOR PLAN



LOCATION



EPC

These particulars, whilst believed to be accurate are set out as a general outline only for guidance and do not constitute any part of an offer or contract. Intending purchasers should not rely on them as statements of representation of fact, but must satisfy themselves by inspection or otherwise as to their accuracy. No person in this firm's employment has the authority to make or give any representation or warranty in respect of the property.