



1 Southolme Close Boroughbridge  
York, YO51 9AU

**Offers In Excess Of £375,000**

 4  1  1  C



AN ATTRACTIVE SEMI DETACHED 4 BEDROOMED FAMILY HOME, SKILLFULLY EXTENDED AND BOASTING OVER 1,400 SQ FT, BEAUTIFULLY PRESENTED AND SYMPATHETICALLY IMPROVED BY THE CURRENT OWNERS. OFFERING SPACIOUS, STYLISH ROOMS ENJOYING A DELIGHTFUL ESTABLISHED CUL DE SAC LOCATION SET WITHIN THIS HIGHLY POPULAR AND ACCESSIBLE TOWN OF BOROUGHBIDGE WITH EASE OF ACCESS ONTO THE A1 ALL COMPLEMENTED BY DELIGHTFUL MATURING REAR GARDENS.

MILEAGES: RIPON - 7.5 MILES, HARROGATE - 10.5 MILES, EASINGWOLD - 12 MILES, YORK - 18 MILES, (DISTANCES APPROXIMATE)

AN ATTRACTIVE SEMI DETACHED 4 BEDROOMED FAMILY HOME, SKILLFULLY EXTENDED AND BOASTING OVER 1,400 SQ FT, BEAUTIFULLY PRESENTED AND SYMPATHETICALLY IMPROVED BY THE CURRENT OWNERS. OFFERING SPACIOUS, STYLISH ROOMS ENJOYING A DELIGHTFUL ESTABLISHED CUL DE SAC LOCATION SET WITHIN THIS HIGHLY POPULAR AND ACCESSIBLE TOWN OF BOROUGHBIDGE WITH EASE OF ACCESS ONTO THE A1 ALL COMPLEMENTED BY DELIGHTFUL MATURING REAR GARDENS

Staircase Reception Hall, Cloakroom/WC, Sitting/Dining Room, Open Plan Kitchen/Dining/Living Room

First Floor Landing, 3 Bedrooms and Refitted Family Bathroom

Second Floor Landing, Bedroom with En Suite Shower Room

Front Garden, Generous Driveway, Garage, Child Friendly Rear Garden, Decked Terrace and Paved Patio and Timber Garden Store

Beneath a canopy porch a pressed and panelled UPVC entrance door opens to a spacious STAIRCASE LOBBY with eye catching glazed tiled flooring.

A door to a CLOAKROOM with refitted low level WC, wall mounted wash hand basin and charcoal vertical towel radiator.

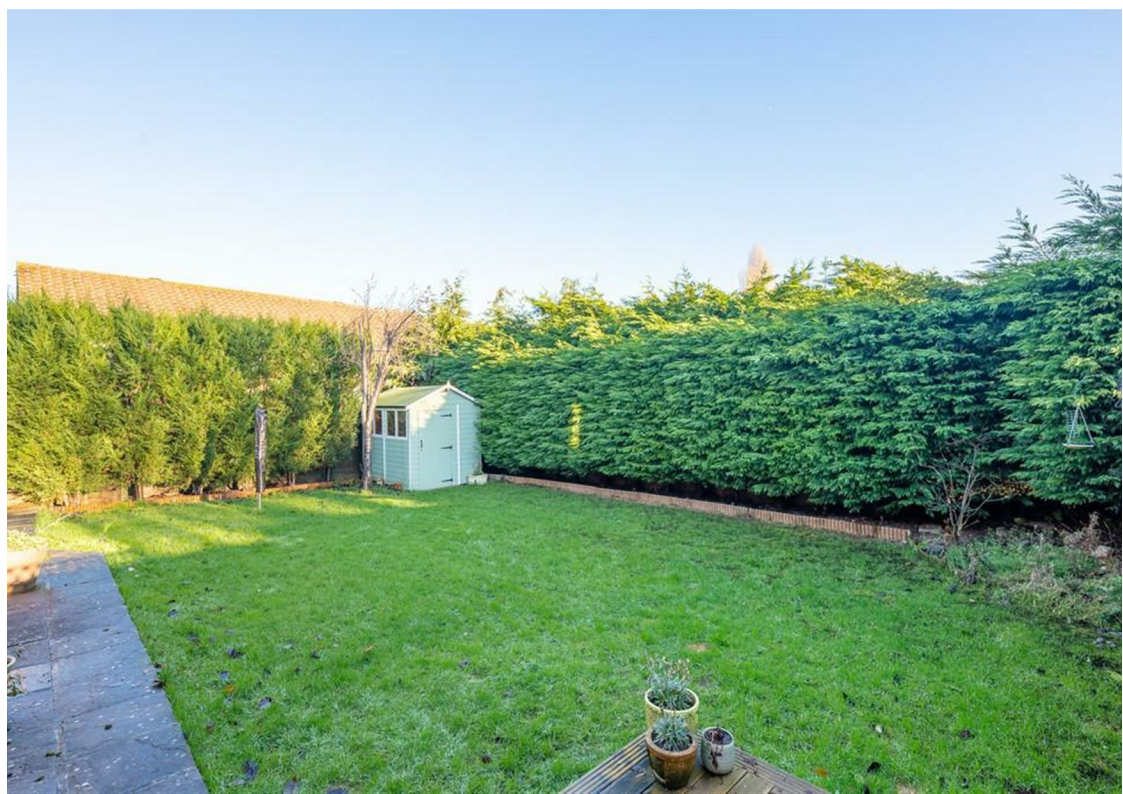
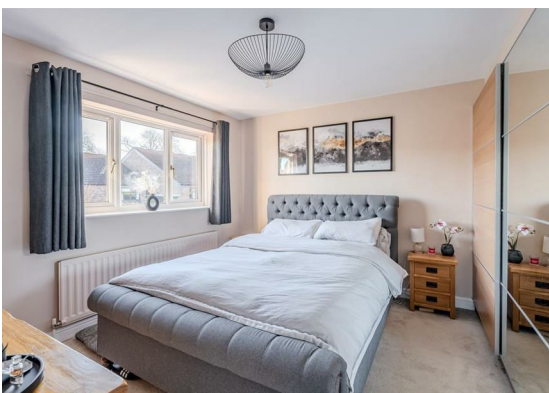
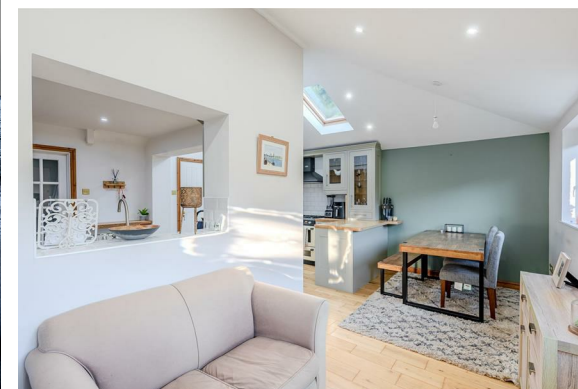
A through SITTING/ DINING ROOM with a window to the front and sliding UPVC doors to the rear decked patio, feature modern recessed gas fireplace below a floating sandstone effect mantle.

Modern LIVING KITCHEN with oak flooring, fitted with a range of 'Shaker' style wall and floor fittings, having timber work surfaces, gas range cooker with chimney style extractor above, flanked by part glazed wall units and space and plumbing for a dishwasher. Belfast sink unit with mixer tap. Further work surface with cupboards and drawers under tiled splash backs. To the very rear and forming part of the single storey extension just off from the kitchen forms a LIVING /DINING ROOM with two UPVC double glazed windows over looking the rear garden and timber door accessing the side.

Stairs rise to the FIRST FLOOR LANDING with useful airing cupboard and stairs accessing the second floor.

TWO DOUBLE BEDROOMS to the front and rear and a single bedroom to the front.

Recently refitted modern FAMILY BATHROOM with a thermostatic controlled shower, rain head and a separate handheld attachment over a panelled bath complimented by a Crittall style shower screen. Wall mounted wash hand basin with chrome mixer tap, low level WC and vertical







charcoal towel radiator.

Second floor landing with timber door leading to a further fourth BEDROOM with ENSUITE shower room comprising wash hand basin on a pedestal, low level WC and shower cubical.

OUTSIDE enjoys a most pleasant position, set well back from the heart of the cul de sac. At the front is mainly laid to lawn with a generous tarmac driveway providing plenty off road parking leading to the INTEGRAL GARAGE (15' 5" x 8' 1") with light, power and to the very rear a useful UTILITY area with plumbing for a washing machine and dryer. Side store cupboard. A personal door connects the kitchen to the garage.

A timber gate leads down the side of the property to a good size maturing rear garden with a paved patio to one side and timber storage shed to the very rear. To the other side a modern timber decked patio both overlooking mainly laid to lawn gardens with fenced timber borders to either side and neatly trimmed conifer trees stretching the width of the garden providing privacy.

LOCATION - Boroughbridge lies approximately 12 miles from York, 10.5 miles from Harrogate and 7.5 miles from Ripon, as well as the Yorkshire Dales and North Yorkshire Moors national parks. The town boasts amenities including a range of independent high street shops, restaurants, pubs, leisure facilities, primary and secondary schools, with excellent connections to the A1(M) and A19 motorways and its proximity to the major mainline rail connections at York and Thirsk, make travel to and from the town easy and simple.

COUNCIL TAX BAND - C

LOCAL AUTHORITY Harrogate Council

TENURE - Freehold.

POSTCODE - YO51 9AU.

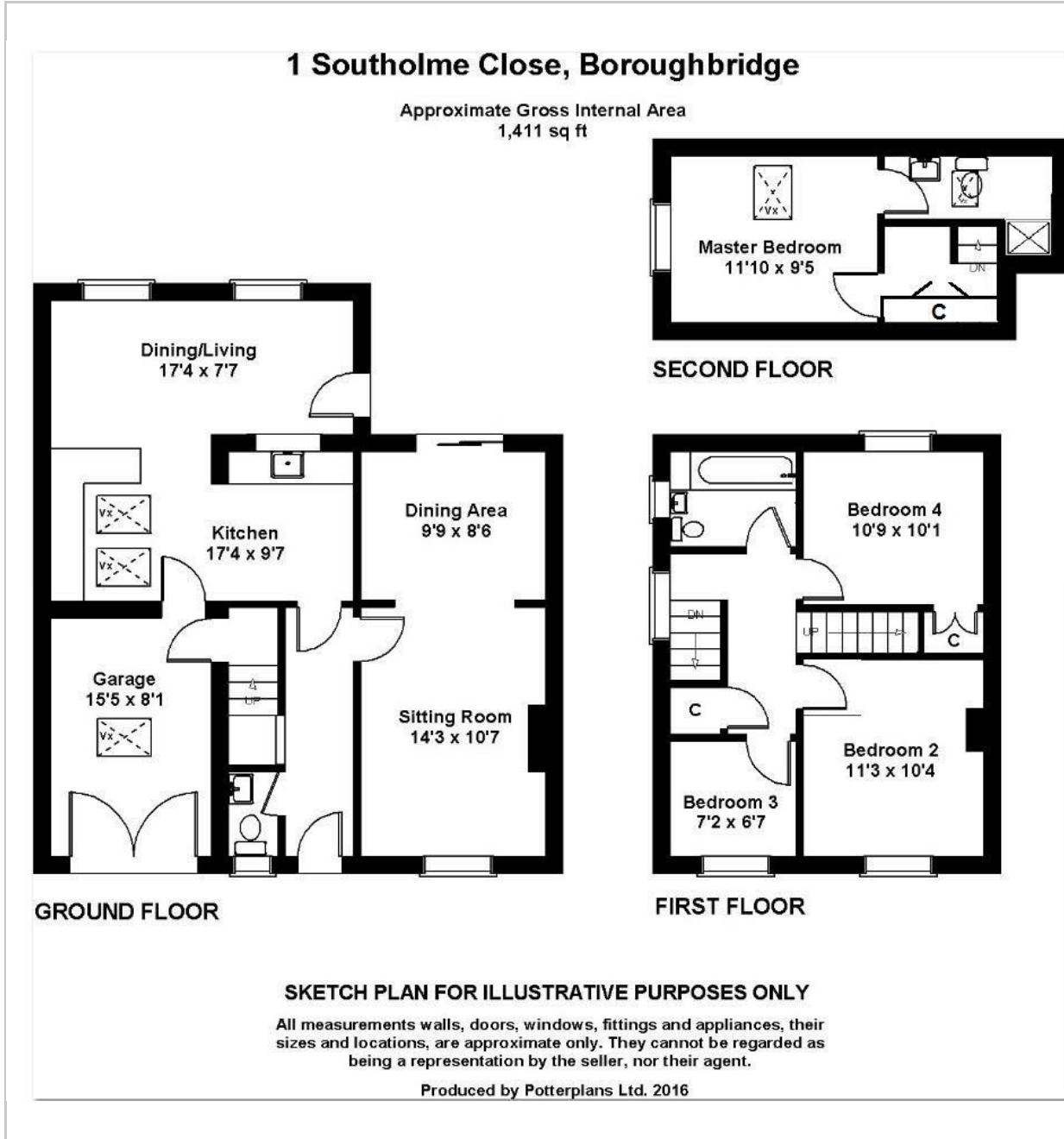
SERVICES - Mains water, electricity and drainage, with gas fired central heating.

DIRECTIONS - On leaving St James Square proceed passed the Primary School turning right onto Springfield Drive and first left onto Springfield Grove, then take the first right onto Ladywell Road and then second right to Southolme Close whereupon No 1 is positioned on the left hand side identified by a Churchills for sale board.

VIEWINGS - Strictly by prior appointment through the selling agents, Churchills Tel: 01423 326889 Email: [spencer@churchillsyork.com](mailto:spencer@churchillsyork.com)



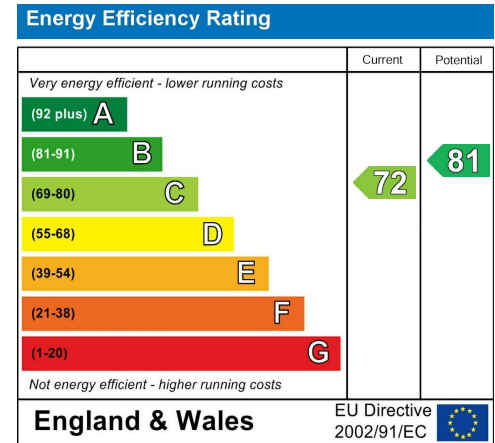
# FLOOR PLAN



# LOCATION



## EPC



These particulars, whilst believed to be accurate are set out as a general outline only for guidance and do not constitute any part of an offer or contract. Intending purchasers should not rely on them as statements of representation of fact, but must satisfy themselves by inspection or otherwise as to their accuracy. No person in this firm's employment has the authority to make or give any representation or warranty in respect of the property.