



3 Long Street Easingwold
York, YO61 3HU
£225,000

 2  1  1  D

OF LIKELY INTEREST TO FIRST TIME BUYERS AND/OR INVESTORS A BEAUTIFULLY APPOINTED AND CHARACTERFUL TWO BEDROOMED VICTORIAN END TERRACE HOUSE, WITH AN ENCLOSED SOUTH FACING WALLED COURTYARD GARDEN WITH REALLY USEFUL BRICK STORAGE.

MILEAGES: YORK - 13 MILES, THIRSK - 11 MILES (DISTANCES APPROXIMATE).

OF LIKELY INTEREST TO FIRST TIME BUYERS AND OR INVESTORS A BEAUTIFULLY APPOINTED AND CHARACTERFUL 2 BEDROOMED VICTORIAN END TERRACE HOUSE, WITH AN ENCLOSED SOUTH FACING WALLED COURTYARD GARDEN.

With UPVC Double Glazing, Panelled Doors, Ceiling Beams and Gas Central Heating.

Sitting Room, Dining Room, Inner Lobby, Fitted Kitchen, Bathroom.

First Floor Landing, 2 Bedrooms.

Outside: A Walled South West Facing Rear Garden with a Detached Summerhouse.

A PVC panelled entrance door, opens to:

SITTING ROOM – Enjoying a pleasant outlook towards a green bank, exposed ceiling beams, attractive fireplace with carved timber mantel and cast dual fuel stove (wood and coal) set on a stone slate hearth, panelled door to:

DINING ROOM - Window to the side elevation, exposed ceiling beams and stairs leading up to the first floor.

INNER LOBBY - With cloaks hanging area.

FITTED KITCHEN - Recently refitted with a range of Shaker style cupboard and drawer wall and floor fittings comprising wood grain effect preparatory work surfaces with inset 4 ring gas hob with a single oven under, ceramic brick style splash and matching wall cupboards, extractor, sink with mixer tap and





side drainer, window to the rear elevation, integrated dishwasher, space and plumbing for a washing machine. Further work surface with deep drawers under, recess with space for an upright fridge/freezer, shelves above and adjoining. PVC panelled and double glazed rear access door to walled garden.

BATHROOM - Refurbished with a white suite comprising shaped and panelled bath with full height tiling, shower screen and plumbed shower over, vanity basin with cupboards under and tiled splash, low suite WC, fitted cupboard with mirror over, heated towel radiator, tiled floor.

Stairs lead from the Kitchen to the:

FIRST FLOOR LANDING

BEDROOM 1 - A good sized double bedroom with a range of fitted wardrobes and pleasant outlook with views towards a 'Green' and rising bank, a further range of fitted wardrobes and cupboard housing the gas fired central heating boiler, loft access.

BEDROOM 2 - Window to the rear elevation overlooking the gardens.

OUTSIDE - A side access opens into a walled south facing rear garden with a detached summerhouse (7'10 × 6'4) with power and light and UPVC double glazed French doors.



LOCATION - Easingwold is a busy Georgian market town offering a wide variety of shops, schools and recreational facilities. There is good road access to principal Yorkshire centres including those of Northallerton, Thirsk, Harrogate, Leeds and York. The town is also by-passed by the A19 for travel further afield.

POSTCODE - YO61 3HU.

TENURE - Freehold.

COUNCIL TAX BAND - B

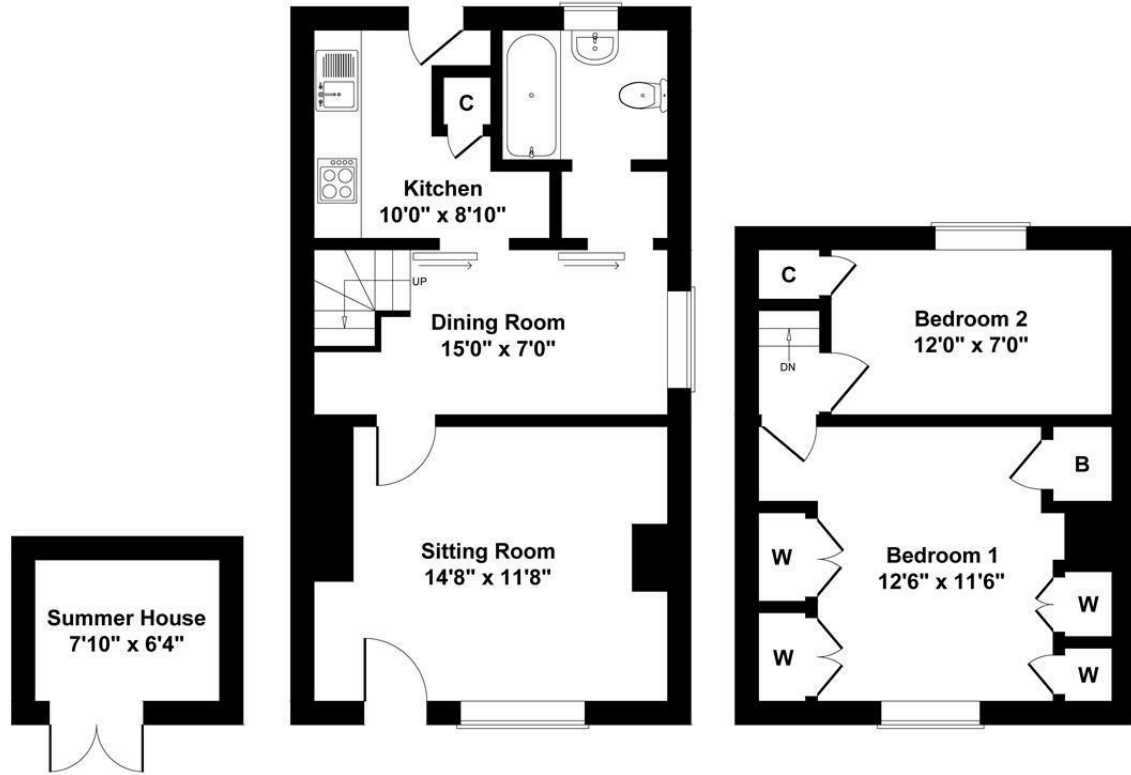
SERVICES - Mains water, electricity and drainage, with gas fired central heating.

DIRECTIONS - From our central Churchills Easingwold office, continue along Long Street towards the mini roundabout, whereupon No. 3 is positioned on the left hand side.

FLOOR PLAN

3 Long Street, Easingwold, York. YO61 3HU

Approximate Gross Internal Area
762 sq ft



OUTBUILDING

GROUND FLOOR

FIRST FLOOR

SKETCH PLAN FOR ILLUSTRATIVE PURPOSES ONLY

All measurements walls, doors, windows, fittings and appliances, their sizes and locations, are approximate only. They cannot be regarded as being a representation by the seller, nor their agent.

Produced by Potterplans Ltd. 2023

LOCATION



EPC

Energy Efficiency Rating		Current	Potential
Very energy efficient - lower running costs			
(92 plus) A			87
(81-91) B			
(69-80) C			
(55-68) D		62	
(39-54) E			
(21-38) F			
(1-20) G			
Not energy efficient - higher running costs			
England & Wales		EU Directive 2002/91/EC	

These particulars, whilst believed to be accurate are set out as a general outline only for guidance and do not constitute any part of an offer or contract. Intending purchasers should not rely on them as statements of representation of fact, but must satisfy themselves by inspection or otherwise as to their accuracy. No person in this firm's employment has the authority to make or give any representation or warranty in respect of the property.