



FARROW
ESTATE AGENTS



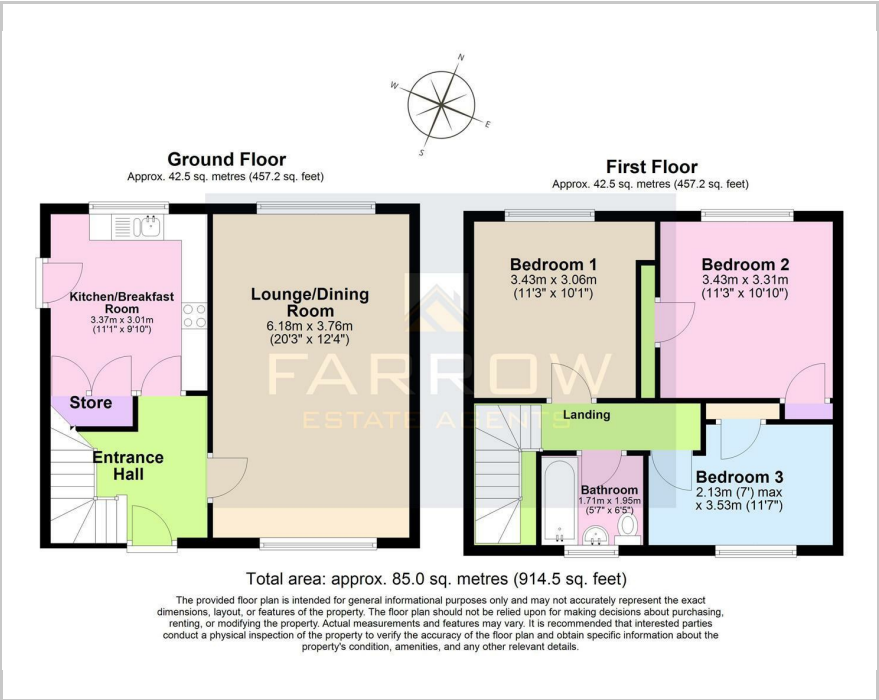
1 Bempton Grove, Grimsby, DN32 9TQ

Guide price £140,000



FARROW
ESTATE AGENTS

Floor Plan



Area Map



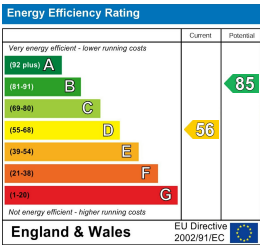
Accommodation

- Substantial Three Bedroom Family Home
- Slight Refurbishment Required
- Gas Central Heating & uPVC Windows
- Good Schools Catchment Area
- Walking Distance To Weelsby Woods
- Close To Local Amenities & Mian Bus Routes
- Large Enclosed Rear Garden
- Easy Access To A16 & A46 Road Links
- Ideal Property For First Time Buyers

Viewing

Please contact our Farrow Estate Agents Office on 01472 355864 if you wish to arrange a viewing appointment for this property or require further information.

Energy Efficiency Graph



These particulars, whilst believed to be accurate are set out as a general outline only for guidance and do not constitute any part of an offer or contract. Intending purchasers should not rely on them as statements of representation of fact, but must satisfy themselves by inspection or otherwise as to their accuracy. No person in this firms employment has the authority to make or give any representation or warranty in respect of the property.