



FARROW
ESTATE AGENTS



21 Brereton Avenue, Cleethorpes, DN35 7RP
Offers in the region of £84,950



3



1



3



D

Floor Plan

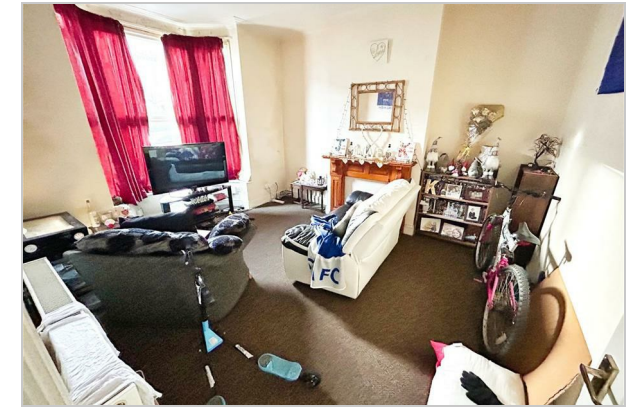


Area Map



Accommodation

- Ready- Made Investment With Long Term Tenant
- Short Walk To Amenities
- Cleethorpes Town Centre Few Minutes Away
- Gas Central Heating
- Great Investment Opportunity
- Deceptively Large Rooms
- Council Tax Band A

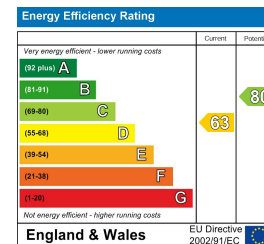


Viewing

Please contact our Farrow Estate Agents Office on 01472 355864 if you wish to arrange a viewing appointment for this property or require further information.



Energy Efficiency Graph



These particulars, whilst believed to be accurate are set out as a general outline only for guidance and do not constitute any part of an offer or contract. Intending purchasers should not rely on them as statements of representation of fact, but must satisfy themselves by inspection or otherwise as to their accuracy. No person in this firm's employment has the authority to make or give any representation or warranty in respect of the property.