

Flat 153/5

Dalry, EH11 2EA



2 bed



1 bath



1 public

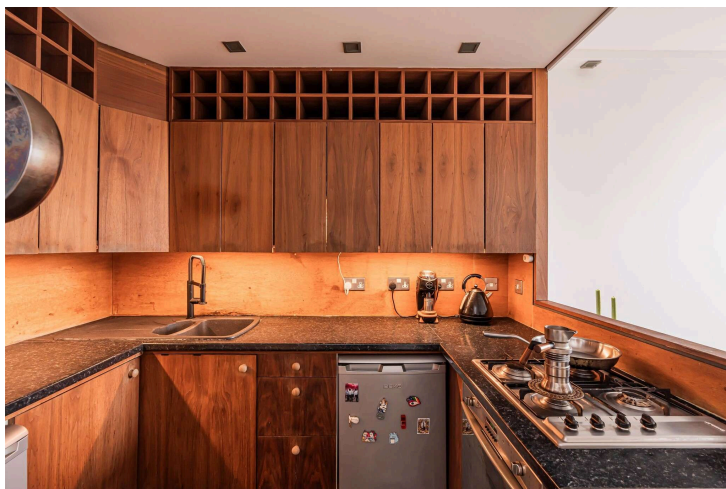


Key Features

- Living/kitchen/dining room
- Two double bedrooms
- Shower and WC
- Gas central heating
- Communal rear garden
- On street residents parking

EPC: C

Council Tax: Band

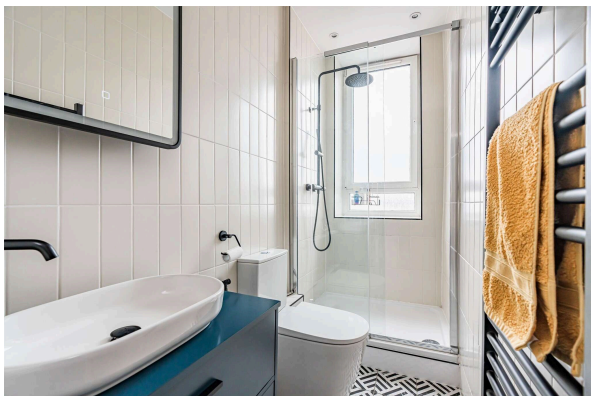




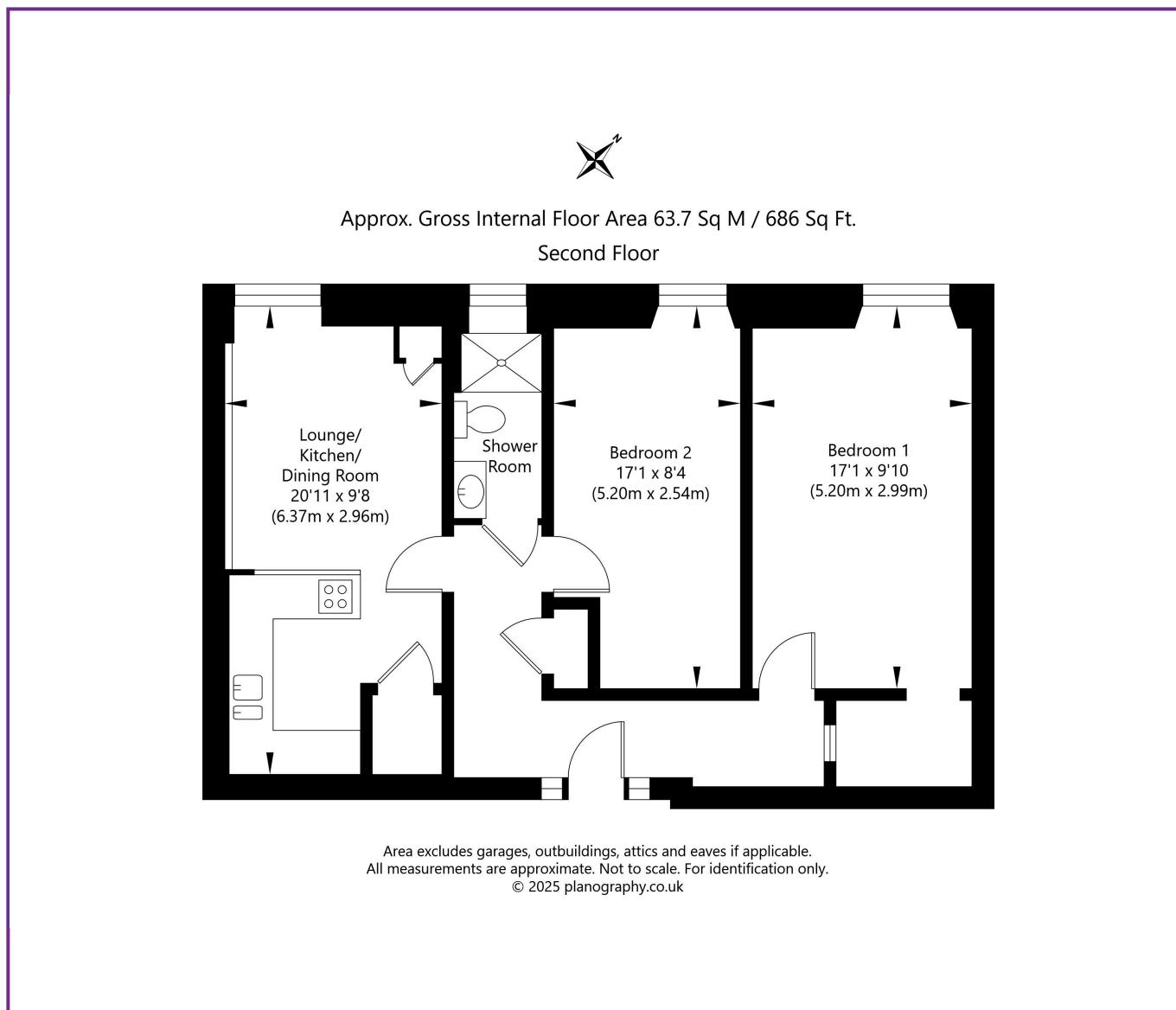
Location

Dalry, is renowned for being a great place to live, with the City Centre, Haymarket Station and West End all being within walking distance. There is an excellent range of local amenities of cafes, bars, eateries, independent shops, and supermarkets all on your doorstep.

There is easy access to Fountain Park Leisure Complex, with all its facilities including a gym and cinema.



Viewing
Tel: 0131 253 2494



116 Colinton Road, Edinburgh EH14 1BY T: 0131 564 1159 E: info@rd-legalservices.co.uk



Disclaimer: These particulars do not form part of any contract or missive to be entered into with a prospective purchaser. All statements and measurements contained herein are believed to be correct but are not warranted or guaranteed. Intending purchasers must satisfy themselves as to the accuracy. No guarantee is given as to the working conditions of any appliance mentioned in these particulars. The photographs shown solely belong to RD Legal.