

6/8 Appin Street

Slateford, EH14 1PN



2 bed



2 bath



1 public



Key Features

- Large bright dual-aspect living room
- Modern kitchen/dining room
- Two generous double bedrooms
- En-suite bathroom
- Separate family bathroom
- Access by lift or stairs
- Gas central heating
- Double glazing

EPC: N/A

Council Tax: Band





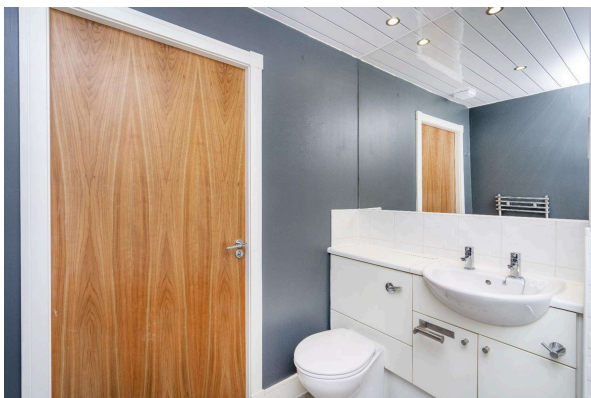
Location

Flat 8, at 6 Appin Street is a spacious 2 bed flat, situated in the popular Slateford area of Edinburgh.

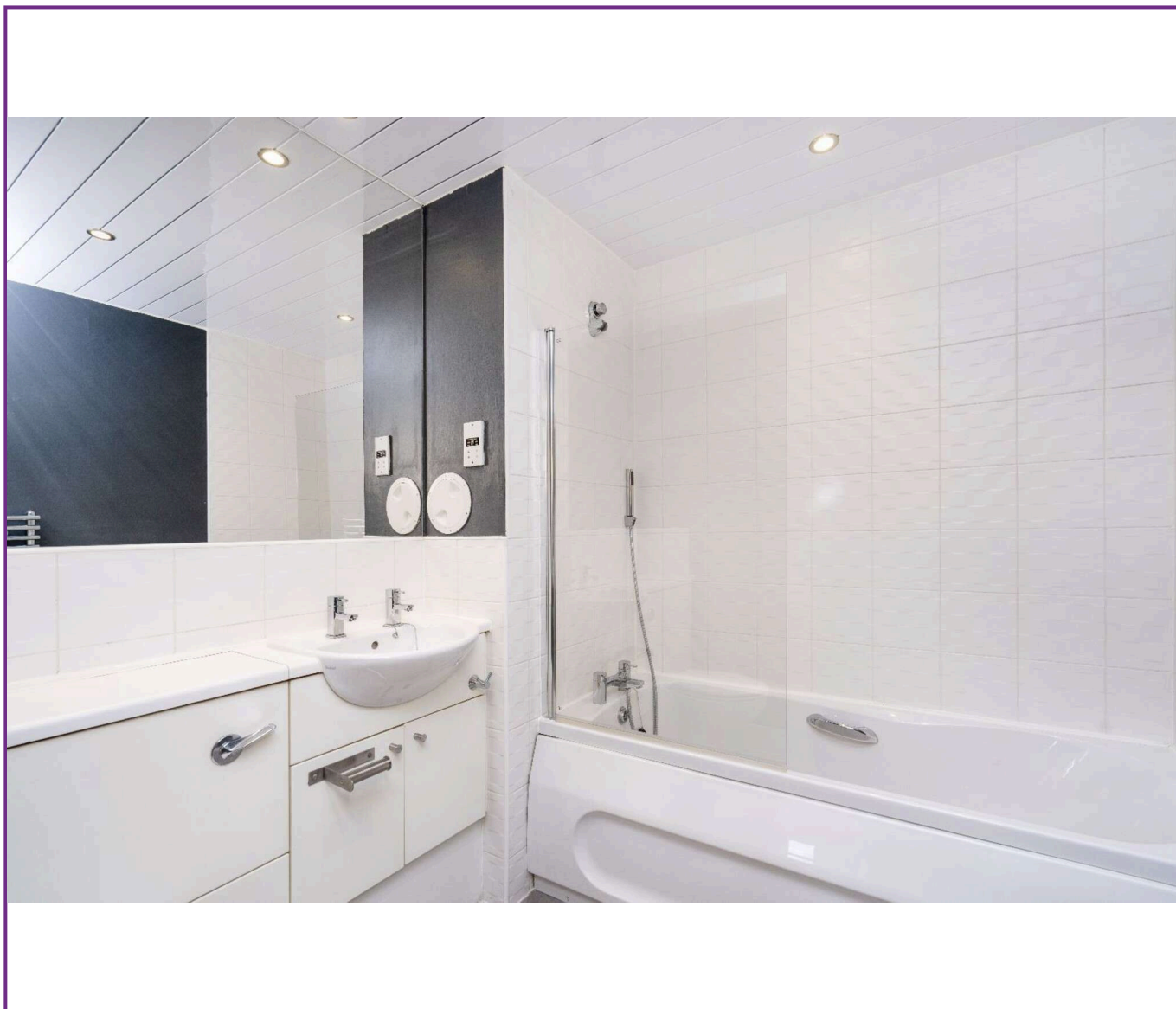
Situated about 2 miles from the city centre, it is well-connected by public transport, making commuting easy while still providing a relatively quiet, more relaxed atmosphere compared to the bustling heart of Edinburgh.

One of the benefits of living in Slateford is its proximity to parks and green spaces. The area is close to the Union Canal, which runs through Edinburgh, offering scenic walks, cycling routes, and opportunities for leisure.

There's also nearby Saughton Park, a pleasant green space with gardens, playgrounds, and sports facilities and Harrison Gardens.



Viewing
Tel: 0131 253 2494



116 Colinton Road, Edinburgh EH14 1BY T: 0131 564 1159 E: estateagents@rd-legalservices.co.uk

espc rightmove  ZOOPLA

 OnTheMarket

 PrimeLocation.com



Disclaimer: These particulars do not form part of any contract or missive to be entered into with a prospective purchaser. All statements and measurements contained herein are believed to be correct but are not warranted or guaranteed. Intending purchasers must satisfy themselves as to the accuracy. No guarantee is given as to the working conditions of any appliance mentioned in these particulars. The photographs shown solely belong to RD Legal.