

1F3, 19 Stewart Terrace

Gorgie, EH11 1UP



1 bed



1 bath



1 public

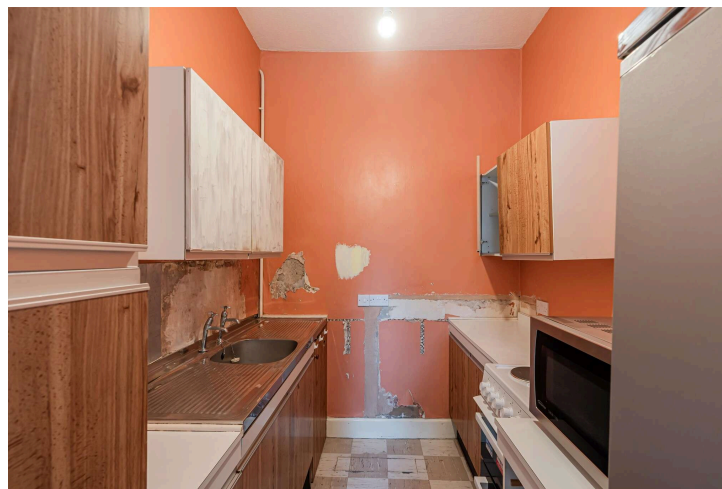


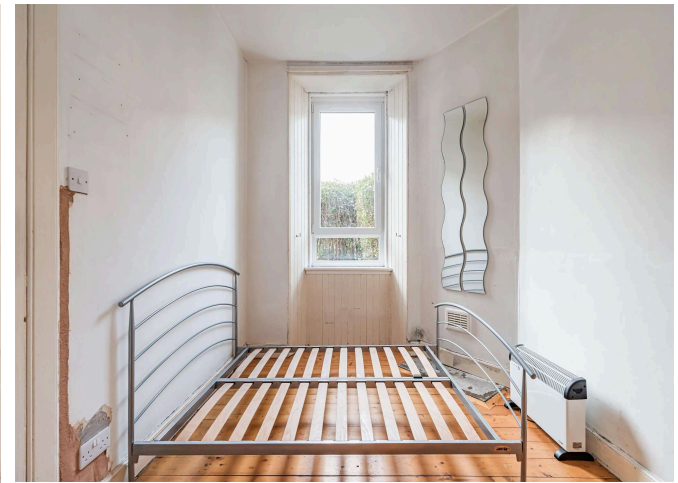
Key Features

- Living room
- Kitchen
- Bedroom
- Bathroom with shower over bath
- Communal rear garden
- Parking for permit holders

EPC: D

Council Tax: Band:



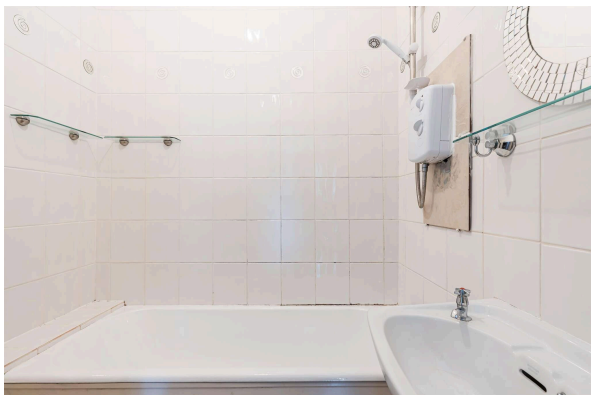


Location

The flat is located in Gorgie, which is renowned for being a great place to live. The City Centre, Haymarket Station and West End are all within walking distance.

Gorgie itself has an excellent range of local amenities of cafes, bars, eateries, independent shops, and supermarkets all on your doorstep.

There is easy access to Fountain Park Leisure Complex, with all its facilities including a gym and cinema.



Viewing
Tel: 0131 253 2494



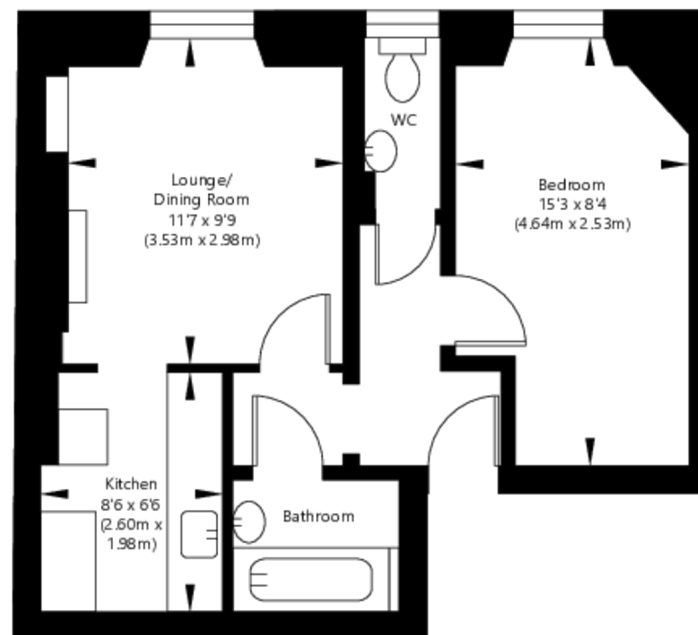
116 Colinton Road, Edinburgh EH14 1BY T: 0131 564 1159 E: info@rd-legalservices.co.uk

Disclaimer: These particulars do not form part of any contract or missive to be entered into with a prospective purchaser. All statements and measurements contained herein are believed to be correct but are not warranted or guaranteed. Intending purchasers must satisfy themselves as to the accuracy. No guarantee is given as to the working conditions of any appliance mentioned in these particulars. The photographs shown solely belong to RD Legal.



Approx. Gross Internal Floor Area 36.52 Sq M / 393 Sq Ft.

Ground Floor



Area excludes garages, outbuildings, attics and eaves if applicable.
All measurements are approximate. Not to scale. For identification only.
© 2025 planography.co.uk

espc rightmove ZOOPLA

