



268 Marionville Road, Edinburgh, EH7 6BQ



1 bed



1 bath



1 public



Key Features

- Large living and dining room
- Compact modern kitchen
- Spacious double bedroom
- Bathroom
- Gas central heating
- Communal garden
- On Street parking

EPC: C

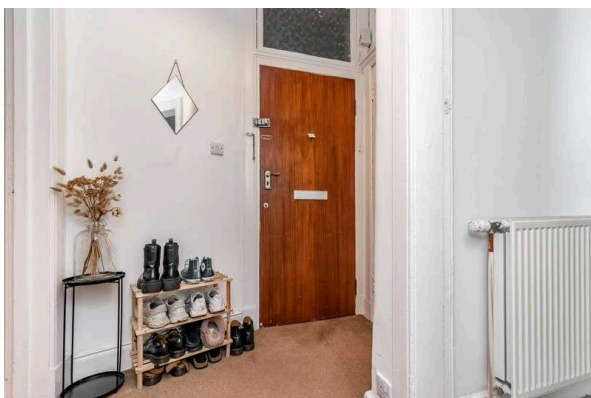




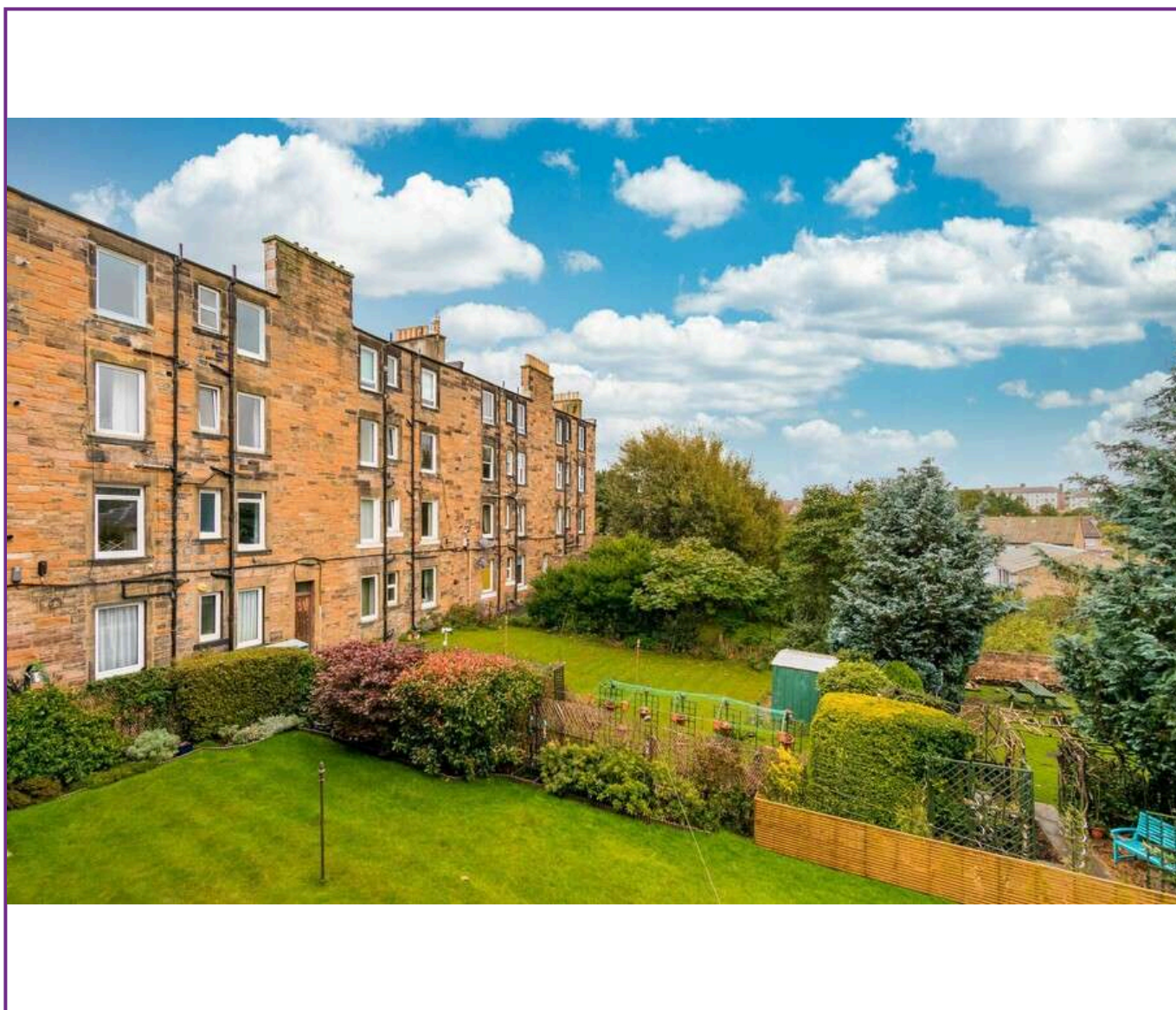
Location:

There are several local amenities in the locality including a small selection of shops and the flat is a short distance from Meadowbank Retail Park. The area is also home to Craighentiny Golf Course, which is a popular destination for golf enthusiasts. It is also a short walk to the vibrant Leith shore. There are breath taking facilities at the renown Meadowbank sports centre including gym, fitness classes, cycle studio, and squash courts.

Meadowbank is well-connected by public transportation, including buses, providing easy access to the city centre and other parts of Edinburgh including including Waverley Station and the Edinburgh tram network.



Viewing
Tel: 0131 253 2494



5 South Charlotte Street, Edinburgh, EH2 4AN T: 0131 564 1159 E: info@rd-legalservices.co.uk



Disclaimer: These particulars do not form part of any contract or missive to be entered into with a prospective purchaser. All statements and measurements contained herein are believed to be correct but are not warranted or guaranteed. Intending purchasers must satisfy themselves as to the accuracy. No guarantee is given as to the working conditions of any appliance mentioned in these particulars. The photographs shown solely belong to RD Legal.