

# Flat 3/9

Shandon, EH11 1QP



2 bed



1 bath



1 public





## Key Features

- Large bright living room
- 2 Bedrooms
- Modern fitted kitchen
- Utility room
- Family bathroom
- Gas central heating

EPC: C

Council Tax: Band





## Location:

Shandon is a highly sought after residential district lying to the southwest of the city centre. Set close to Harrison Park and the the Union Canal which is a traffic free haven for cycling, walking, and running. Harrison Park is one of the main attractions in the area, featuring a children play area, sports facilities and picnic spots.

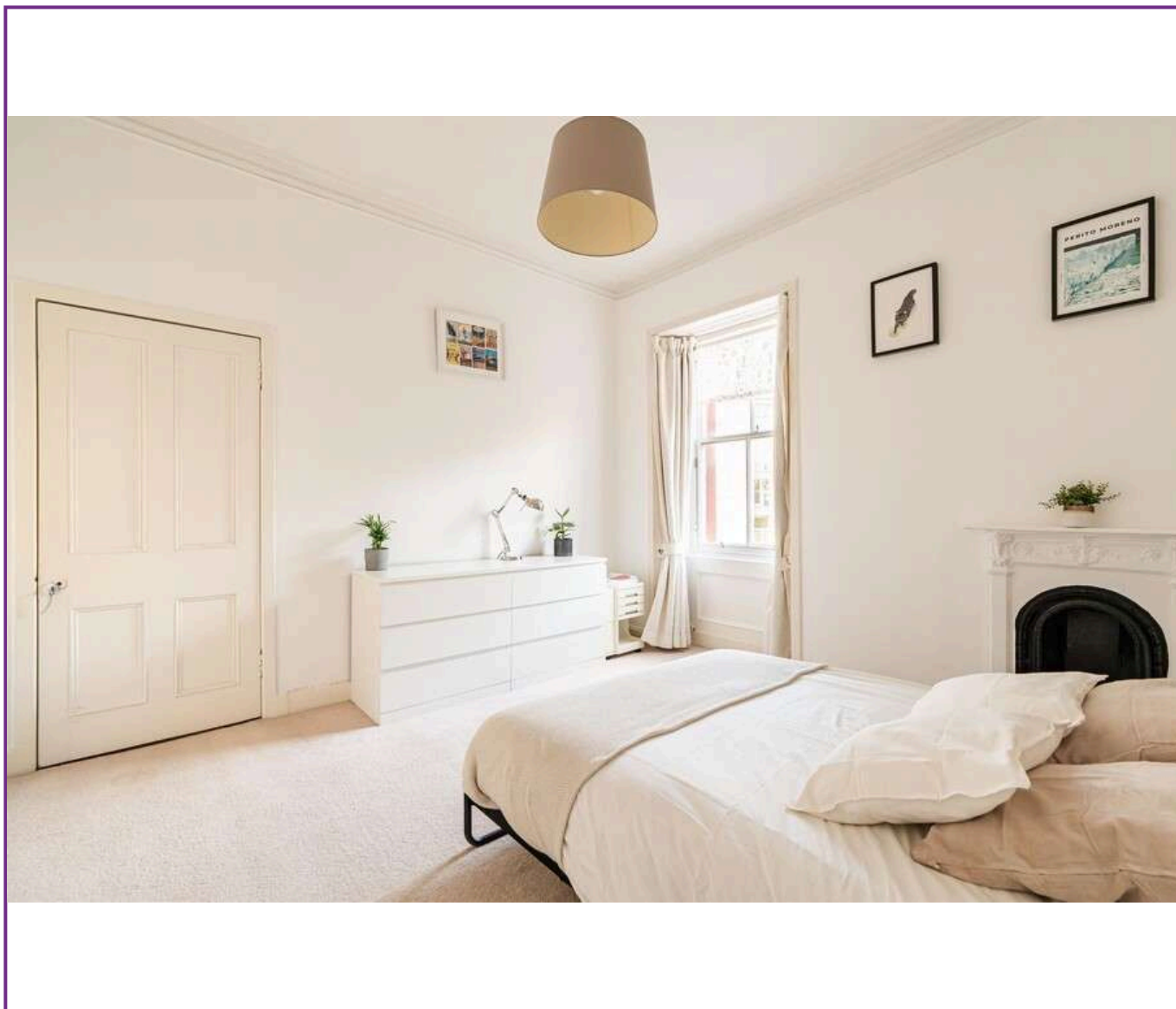
There are a range of local amenities including grocery stores, cafes and restaurants.

Shandon is well-connected to the rest of Edinburgh, with regular bus services running along Slateford Road, Ashley Drive, and Colinton Road providing excellent public transport links across the city.





Viewing  
Tel: 0131 253 2494



5 South Charlotte Street, Edinburgh, EH2 4AN T: 0131 564 1159 E: [info@rd-legalservices.co.uk](mailto:info@rd-legalservices.co.uk)



zoopla

PrimeLocation.com



Disclaimer: These particulars do not form part of any contract or missive to be entered into with a prospective purchaser. All statements and measurements contained herein are believed to be correct but are not warranted or guaranteed. Intending purchasers must satisfy themselves as to the accuracy. No guarantee is given as to the working conditions of any appliance mentioned in these particulars. The photographs shown solely belong to RD Legal.