

# 66 Redhall Drive

Redhall, EH14 2HG



4 bed



2 bath



1 public



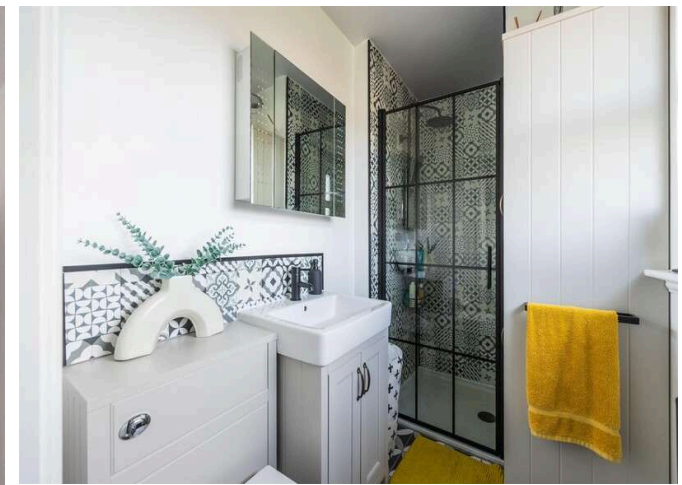
## Key Features

- 4 Bedrooms
- Spacious lounge/Dinning room
- Modern fitted kitchen
- Utility room
- Garage & Driveway
- Front and Rear Garden
- Gas central Heating
- Double glazing

EPC: C

Council Tax: Band





## Location

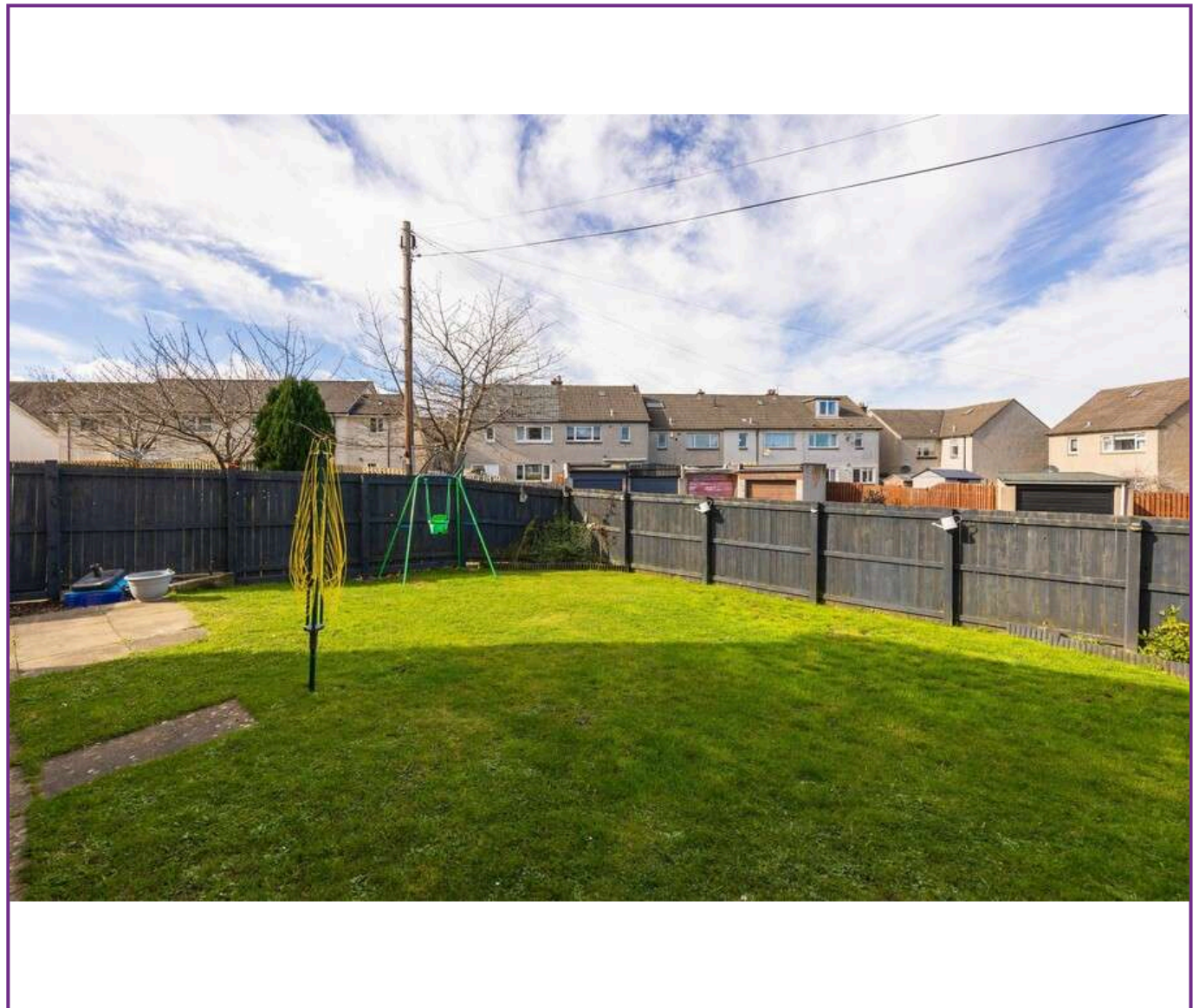
Redhall presents a blend of residential properties and green spaces, offering a peaceful environment for residents. The community is well-connected to the rest of Edinburgh, providing easy access to the city's attractions and amenities while maintaining a sense of tranquillity away from the bustling city centre. Situated between Slateford and Kingsknowe, Redhall is a small community popular among families due to its convenient location for commuting to Edinburgh City Centre

Redhall residents enjoy proximity to educational institutions like Longstone Primary School and Firrhill High School, catering to both primary and secondary education needs

Recreational amenities abound in the area, with attractions like Redhall public park, Kingsknowe Golf Course, Craiglockhart Sports Centre, and the Water of Leith walkway offering leisure options for residents



Viewing  
Tel: 0131 253 2494



5 South Charlotte Street, Edinburgh, EH2 4AN T: 0131 564 1159 E: info@rd-legalservices.co.uk



Disclaimer: These particulars do not form part of any contract or missive to be entered into with a prospective purchaser. All statements and measurements contained herein are believed to be correct but are not warranted or guaranteed. Intending purchasers must satisfy themselves as to the accuracy. No guarantee is given as to the working conditions of any appliance mentioned in these particulars. The photographs shown solely belong to RD Legal.