

*Local expertise with powerful national marketing*

EDWARDS  
ESTATE AGENTS

RINGWOOD ROAD  
VERWOOD, BH31 7AJ







# GUIDE PRICE £675,000

---

Occupying a SUBSTANTIAL PLOT, this stunning FIVE DOUBLE BEDROOM CHALET style residence is positioned in a convenient non-estate location in the centre of Verwood with all amenities close by and within walking distance of RINGWOOD FOREST.

Energy Performance Rating A  
Council Tax Band E





An electrically operated five-bar gate give access to the property and sweeping driveway providing parking for multiple vehicles and garage.

Bright and spacious, the entrance hall has wood effect flooring flowing through to the living accommodation, and contemporary kitchen/breakfast/dining room.

With a view straight through to the garden, the kitchen is extremely stylish. Fitted with a range of sleek white gloss units, breakfast bar and central island. Integrated appliances include an induction hob, waist high double ovens, wine cooler and fridge/freezer. Large bi-fold doors give access out to the rear patio and garden, while bespoke flat glass rooflights provide seamless daylight and sky views.

Dual aspect windows flood the dining room with natural light. A larch open archway leads through to the formal dual aspect living room. This room features a bow window and focal fireplace with inset log burner, floating wood mantelpiece and stone hearth.

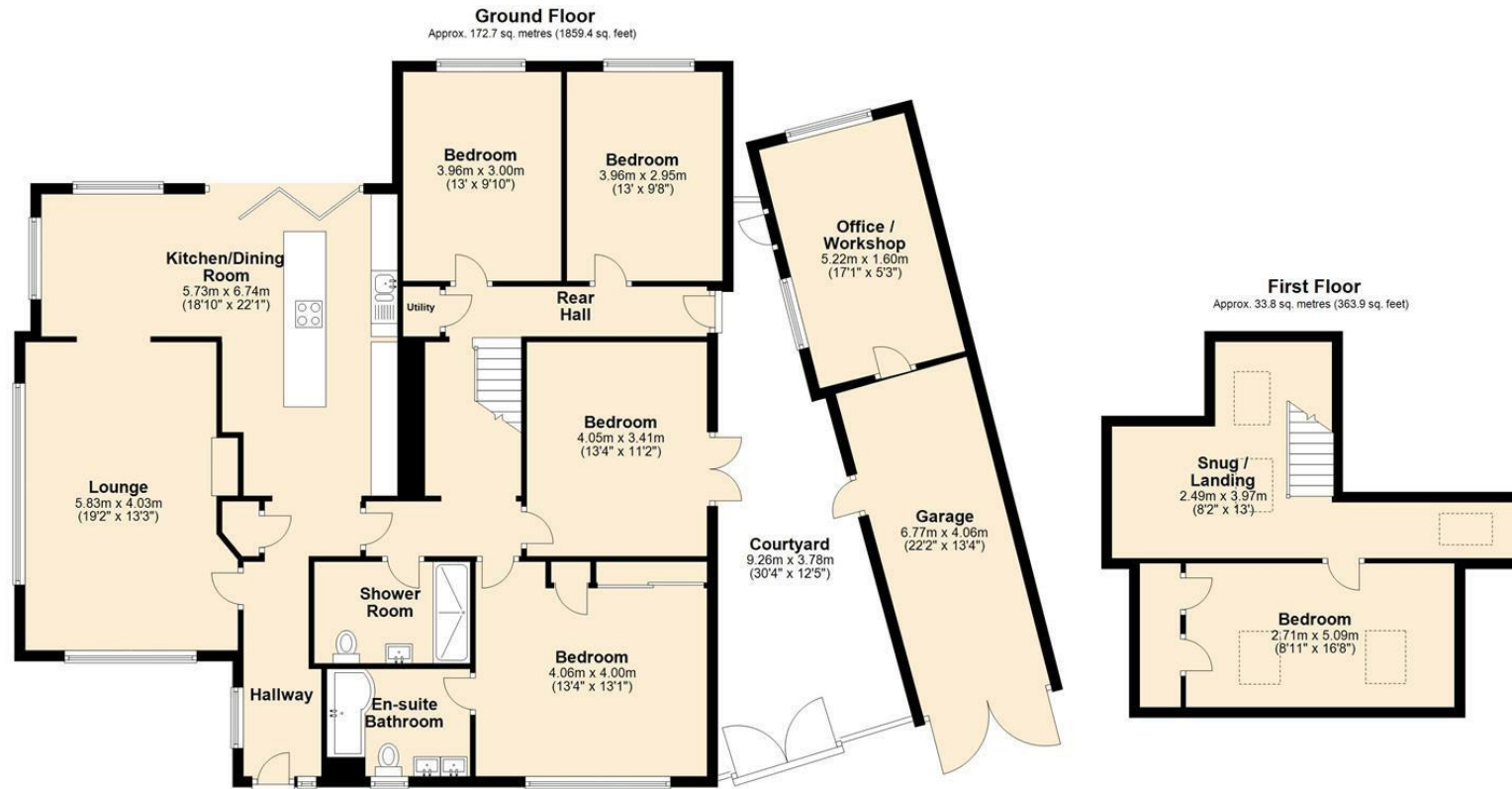
The inner hallway has a useful built-in shelf, recess coat and shoe hanging and storage and a fully tiled family shower room comprising an oversized shower cubicle, contemporary basin with vanity storage, WC and underfloor heating.

On the ground floor are four generous double bedrooms. The main bedroom benefits from a full array of wardrobes and sizeable fully tiled en-suite fitted with his and hers sinks and vanity storage, heated mirrors, floating WC and shower bath with large ceiling mounted soaker shower head and underfloor heating.

With skylights and windows, the first floor landing is currently utilised as an office area. A further bedroom is also located at the front with built-in wardrobes and skylights.

Surrounding the property, the large garden has an area of patio abutting the kitchen/diner, pagoda which is currently where the hot tub is located, garage and storage with owned roof solar panels with battery storage making this home extremely economical to run given its size.





Total area: approx. 206.6 sq. metres (2223.3 sq. feet)

Bournemouth Energy Floor Plans are provided for illustration/identification purposes only. Not drawn to scale, unless stated and accept no responsibility for any error, omission or mis-statement. Dimensions shown are to the nearest 7.5 cm / 3 inches. Total approx area shown on the plan may include any external terraces, balconies and other external areas. To find out more about Bournemouth Energy please visit [www.bournemouthenergy.co.uk](http://www.bournemouthenergy.co.uk)  
(Tel: 01202 556006)  
Plan produced using PlanUp.

These particulars are believed to be correct but their accuracy is not guaranteed and they do not form part of any contract. Whilst every effort is made to ensure the accuracy of these details, it should be noted that the above measurements are approximate only. Floorplans are for representation purposes only and prepared according to the RICS Code of Measuring Practice by our floorplan provider. Therefore, the layout of doors, windows and rooms are approximate and should be regarded as such by any prospective purchaser. Any internal photographs are intended as a guide only and it should not be assumed that any of the furniture/ fittings are included in any sale. Where shown, details of lease, ground rent and service charge are provided by the vendor and their accuracy cannot be guaranteed, as the information may not have been verified and further checks should be made either through your solicitor/conveyancer or by referring to the home information pack for this property. Where appliances, including central heating, are mentioned, it cannot be assumed that they are in working order, as they have not been tested. Please also note that wiring, plumbing and drains have not been checked.



*Local expertise with powerful national marketing*

EDWARDS  
ESTATE AGENTS



**Ferndown Office**

404 Ringwood Road, Ferndown, Dorset, BH22 9AU • [www.edwardstates.com](http://www.edwardstates.com)  
01202 855595