

*Local expertise with powerful national marketing*

EDWARDS  
ESTATE AGENTS

QUARTER JACK PARK  
WIMBORNE, BH21 2BZ







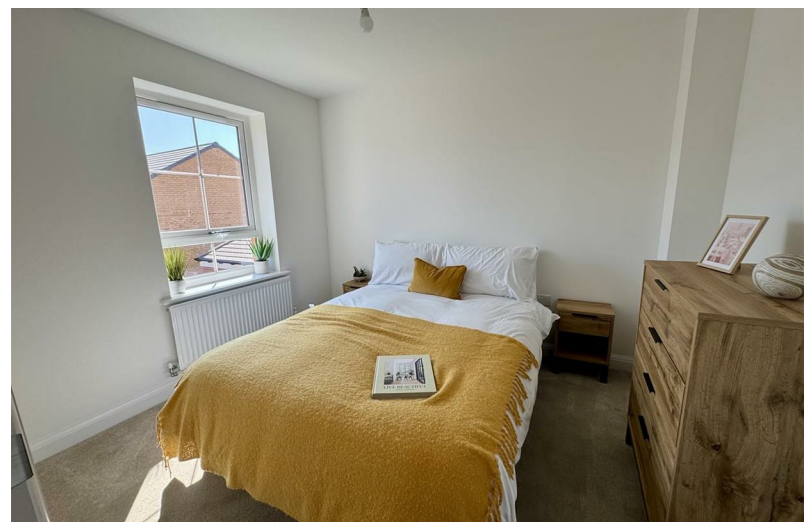
# GUIDE PRICE £397,500

- MID-TERRACE FAMILY HOME
- THREE BEDROOMS
- OPEN PLAN KITCHEN AND DINING AREA
- SPACIOUS LOUNGE WITH SPACE TO WORK FROM HOME
- FRENCH DOORS LEADING TO YOUR GARDEN
- CLOAKROOM AND HALL STORAGE
- SOUTHERLY FACING REAR GARDEN
- MAIN DOUBLE BEDROOM WITH EN SUITE
- 10 YEAR BUILDING WARRANTY
- CLOSE TO TOWN

The Maidstone is the perfect first home. When you enter this three bedroom mid-terrace home, you're welcomed by a bright and airy lounge, followed by an open-plan kitchen and dining area with French doors that lead to your garden.

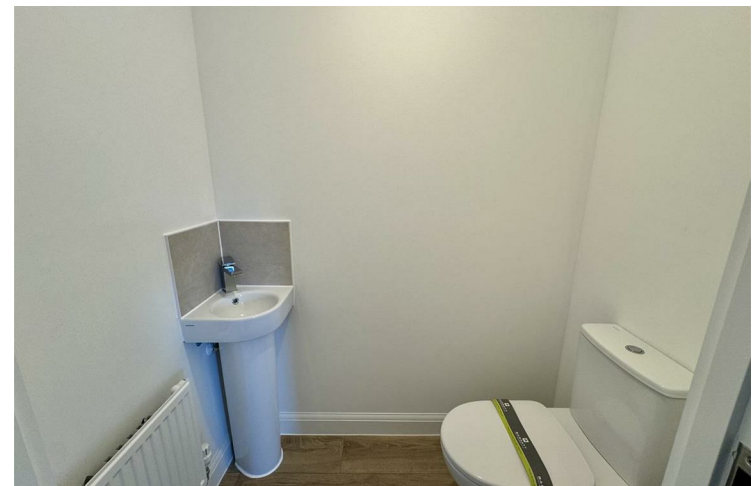
Upstairs you will find your main double bedroom with en suite, a further double bedroom and an adaptable single bedroom. Plus benefit from 2 parking spaces to the front of the home.

Energy Performance Rating TBC  
Council Tax Band TBC

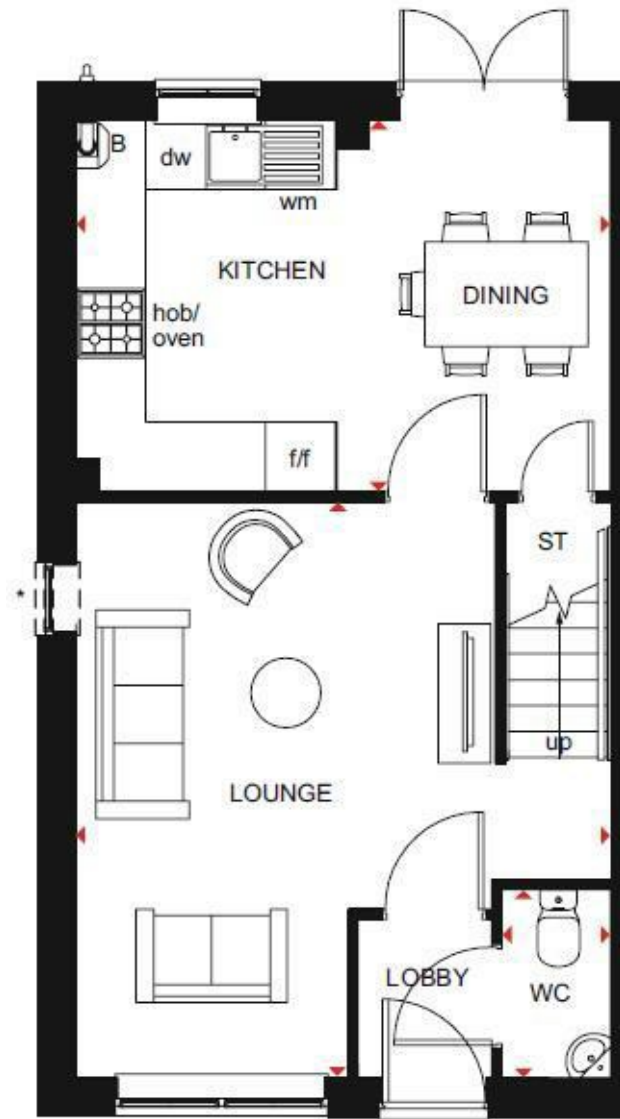












These particulars are believed to be correct but their accuracy is not guaranteed and they do not form part of any contract. Whilst every effort is made to ensure the accuracy of these details, it should be noted that the above measurements are approximate only. Floorplans are for representation purposes only and prepared according to the RICS Code of Measuring Practice by our floorplan provider. Therefore, the layout of doors, windows and rooms are approximate and should be regarded as such by any prospective purchaser. Any internal photographs are intended as a guide only and it should not be assumed that any of the furniture/ fittings are included in any sale. Where shown, details of lease, ground rent and service charge are provided by the vendor and their accuracy cannot be guaranteed, as the information may not have been verified and further checks should be made either through your solicitor/conveyancer or by referring to the home information pack for this property. Where appliances, including central heating, are mentioned, it cannot be assumed that they are in working order, as they have not been tested. Please also note that wiring, plumbing and drains have not been checked.

*Local expertise with powerful national marketing*



Ferndown, Dorset BH22 9AU

01202 855595

[www.edwardstates.co.uk](http://www.edwardstates.co.uk)