

*Local expertise with powerful national marketing*

EDWARDS  
ESTATE AGENTS

DULLAR LANE

WIMBORNE, BH21 4AD







# GUIDE PRICE £510,000

This immaculately presented three bedroom DETACHED BUNGALOW is conveniently located in the popular village of STURMINSTER MARSHALL with local amenities and TRANSPORT LINKS nearby as well as a well regarded first school and nine hole GOLF COURSE.

The property is accessed via a private road with just two properties. The driveway has been extended and offers plenty of parking as well as access to the garage and rear garden.

Once inside, you are welcomed via a covered entrance porch and composite door into the spacious and light entrance hall, with oak effect laminate flooring, core matting, solid oak internal doors, two feature curved walls and a large storage cupboard.

To your left is the master bedroom, with a beautiful square bay window, panelling, fitted wardrobes and a beautiful ensuite with Haver Sand Stone effect ceramic floor and wall tiles, WC, walk in shower, heated towel rail and white Metro wall hung vanity units.

Opposite the master bedroom is a further double bedroom, also with fitted wardrobes. There is a further single bedroom.

The family bathroom includes a further walk in shower, separate bath, WC, Haver Sand Stone effect ceramic floor and wall tiles, heated towel rail and white Metro wall hung vanity units.

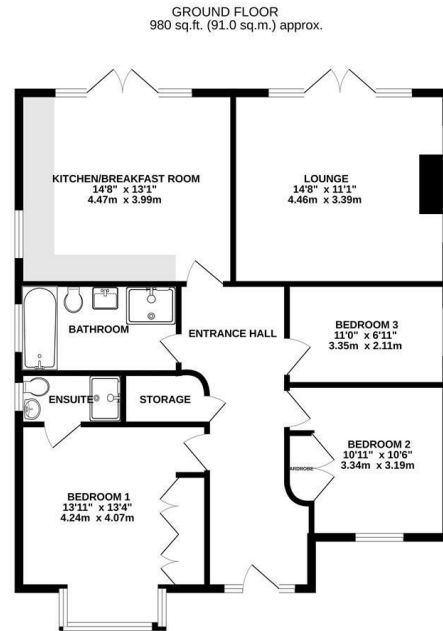
The lounge is spacious and bright, with patio doors to the rear garden and full height windows each side of the wood burner.

The beautiful kitchen includes Chelford Grey cabinets with white marble effect worktop and brushed brass effect handles. There is an integrated BOSCH Combi microwave, BOSCH touch control ceramic hob, integrated BOSCH multi-function oven, integrated Lamona fridge freezer, integrated Lamona washing machine, integrated Lamona dishwasher, ceramic sink and dark oak effect laminate flooring. There are double doors to the rear garden and onto a large patio, which has been partially covered with a stainless steel gazebo with tilting roof, providing both sun and shade. The garden itself is mainly laid to lawn and offers plenty of privacy.

Energy Performance Rating B  
Council Tax Band E



# Local expertise with powerful national marketing



TOTAL FLOOR AREA: 980 sq.ft. (91.0 sq.m.) approx.  
While every attempt has been made to ensure the accuracy of the floorplan contained here, measurements of floors, windows, doors and any other items are approximate and not guaranteed to show the exact position or dimensions. The plan is for illustrative purposes only and should be used as a guide only. Prospective purchasers: The services, systems and appliances shown have not been tested and no guarantee can be given regarding their operation or condition.

## Ferndown Office

404 Ringwood Road, Ferndown, Dorset, BH22 9AU • [www.edwardstates.com](http://www.edwardstates.com)  
01202 855595

EDWARDS  
ESTATE AGENTS

These particulars are believed to be correct but their accuracy is not guaranteed and they do not form part of any contract. Whilst every effort is made to ensure the accuracy of these details, it should be noted that the above measurements are approximate only. Floorplans are for representation purposes only and prepared according to the RICS Code of Measuring Practice by our floorplan provider. Therefore, the layout of doors, windows and rooms are approximate and should be regarded as such by any prospective purchaser. Any internal photographs are intended as a guide only and it should not be assumed that any of the furniture/ fittings are included in any sale. Where shown, details of lease, ground rent and service charge are provided by the vendor and their accuracy cannot be guaranteed, as the information may not have been verified and further checks should be made either through your solicitor/conveyancer or by referring to the home information pack for this property. Where appliances, including central heating, are mentioned, it cannot be assumed that they are in working order, as they have not been tested. Please also note that wiring, plumbing and drains have not been checked.