

MULTI-USE UNIT TO LET

ALMARs

COMMERCIAL

020 7403 0600

152 OLD KENT ROAD, LONDON, SE1 5TY
813 SQ FT (76 SQ M)



LOCATION:

The Old Kent Road is a busy high street with a diverse array of businesses. It is a 5 minute bus journey from Elephant and castle .

DESCRIPTION:

This former community centre comprises a small fitted out hall space at the front with toilets , a small room and kitchen towards the rear. It benefits rear access, and shutters at the front.

This unit falls under class E planning permission, open to a variety of retail users. It cannot be used as a takeaway food shop, gambling shop or vape shop.





SIZE: 813 Sq Ft (76 Sq M)



RENT: £17,500 New Lease



COSTS:

RATES PAYABLE: RATES PAYABLE-
£6758

VAT: VAT is payable on the rent and
service charge.

LEGAL COSTS: The incoming tenant
will pay the landlord's legal and
surveyor fees.



VIEWINGS:

By arrangement with the owner's sole
agents KALMARs Commercial.



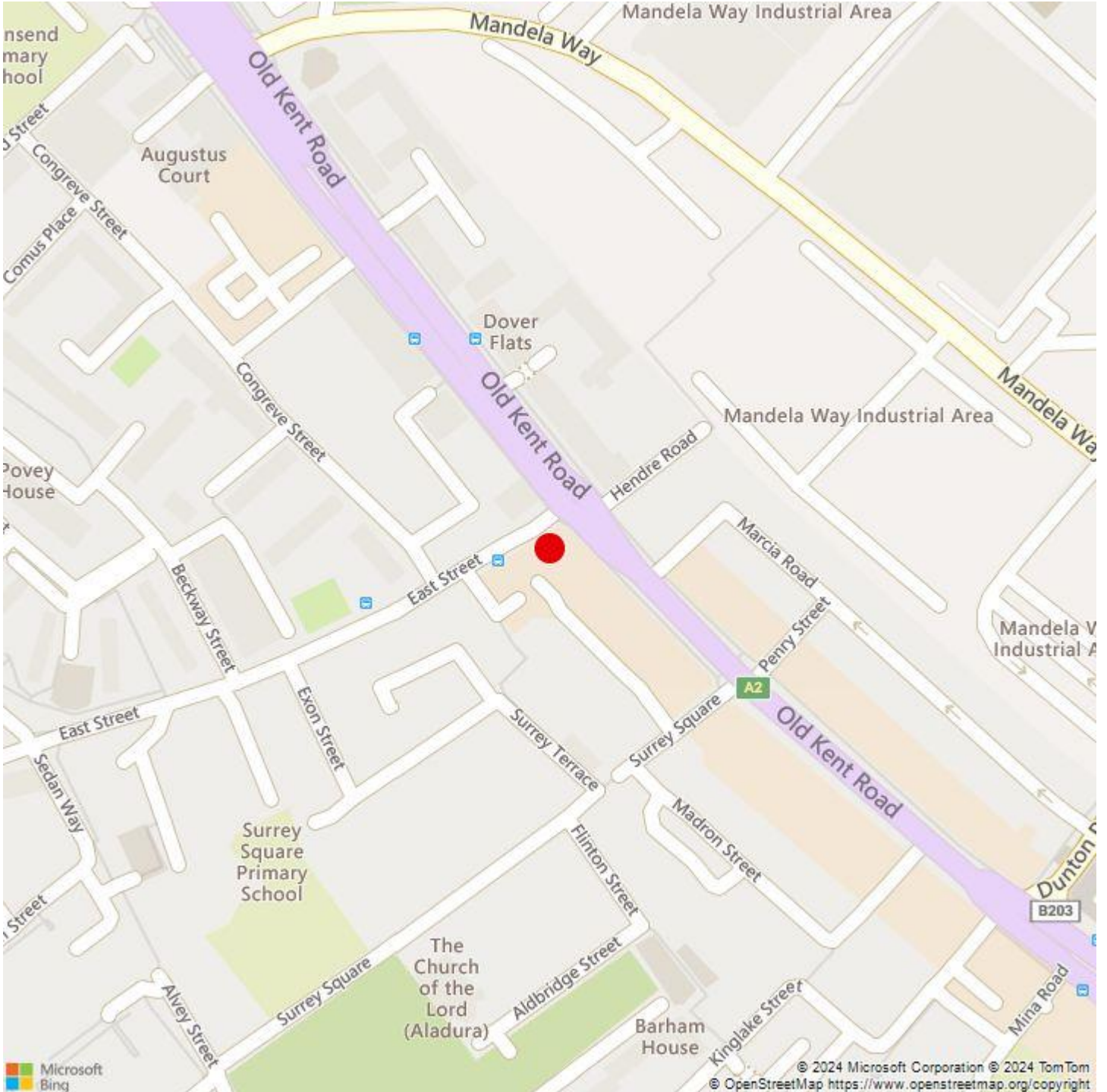
CONTACT:

Farah Mohamed
020 7403 0600
farahm@kalmars.com



KALMARs

SOUTH LONDON'S LEADING AGENTS



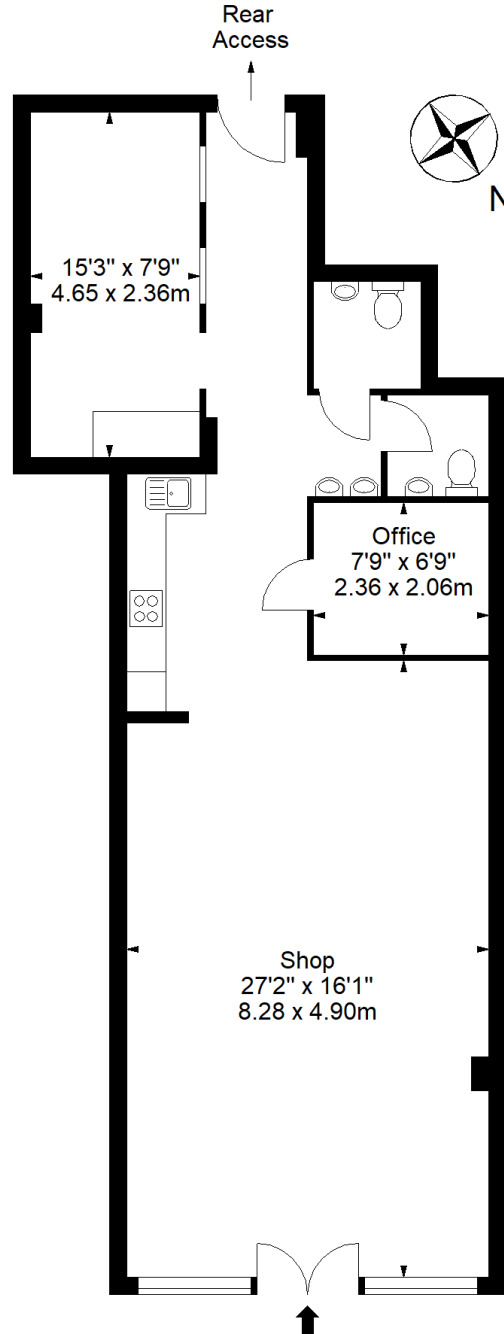
All properties are offered subject to contract and availability. These particulars are believed to be correct when published, but we cannot accept any liability whatsoever for any misrepresentation made either in these particulars or orally. Intending purchasers or tenants are strongly advised to make their own enquiries to check these particulars to satisfy themselves that the property is suitable for their purchase. They may be subject to VAT.

KALMARs

SOUTH LONDON'S LEADING AGENTS

Old Kent Road, SE1

Approx. Gross Internal Area *
813 Ft² - 75.53 M²



Ground Floor

For Illustration Purposes Only - Not To Scale - Floor Plan by inter Design Photography

www.interdesignphotography.com

This floor plan should be used as general outline for guidance only.
All measurements are approximate and for illustration purposes only as defined by the RICS Code of Measuring Practice © 2024

