

FOR SALE

860 SQ FT (80 SQ M)

KALMARs

COMMERCIAL

020 7403 0600



RAVEN WHARF, UNIT 1, 14 LAFONE STREET, LONDON, SE1 2LR

LOCATION:

The office is located on Lafone Street within the Shad Thames area behind Butler's Wharf, and is close to Tower Bridge. The area is now one of London's most vibrant and dynamic locations, providing a wide variety of restaurants, cafes and bars. To the west of the property is the More London Estate. London Bridge station (Jubilee, Northern lines and National Rail) and Tower Hill station (Circle, District and DLR lines) are within a short walking distance.

DESCRIPTION:

Due to be refurbished Q2 2024. The office is set on a raised ground floor of the Raven Wharf building on Lafone Street. It is divided into two larger open-plan office spaces, and has two additional closed office units that could be removed to create an open-plan office area for the entire unit. The office is fitted with LED lighting throughout, it has 2 tucked away WCs, 2 kitchenettes and has numerous built in storage spaces.





SIZE:

860 Sq Ft (80 Sq M)



SALE PRICE:

£490,000 O.I.R.O.



COSTS:

SERVICE CHARGE: £2,800 pa

VAT: VAT is payable on the rent and service charge

LEGAL COSTS: Both parties to pay their own legal costs



VIEWINGS:

By arrangement with the owner's sole agents KALMARs Commercial



CONTACT:

Joel Dela Cruz

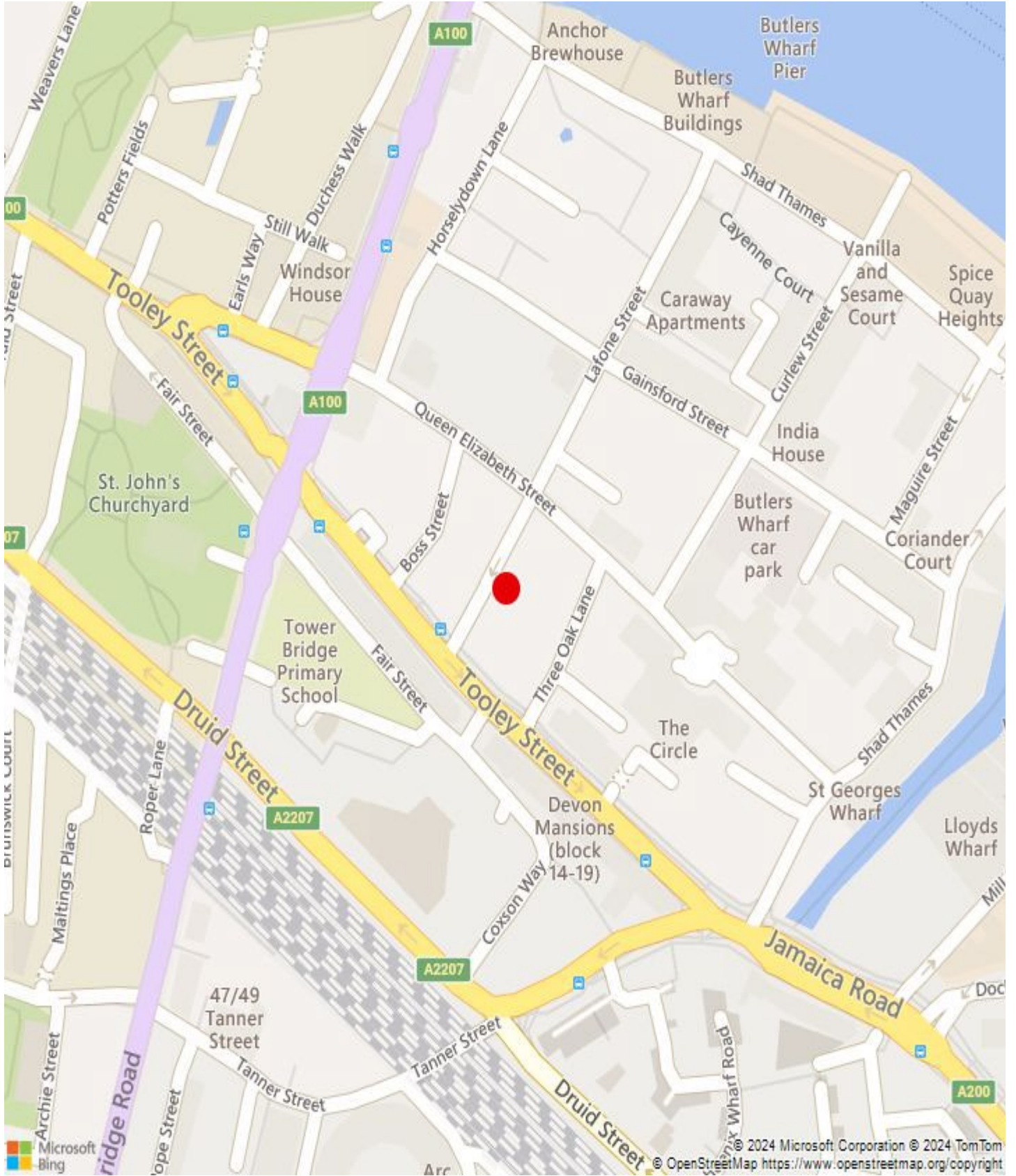
07815 114738

joeldc@kalmars.com

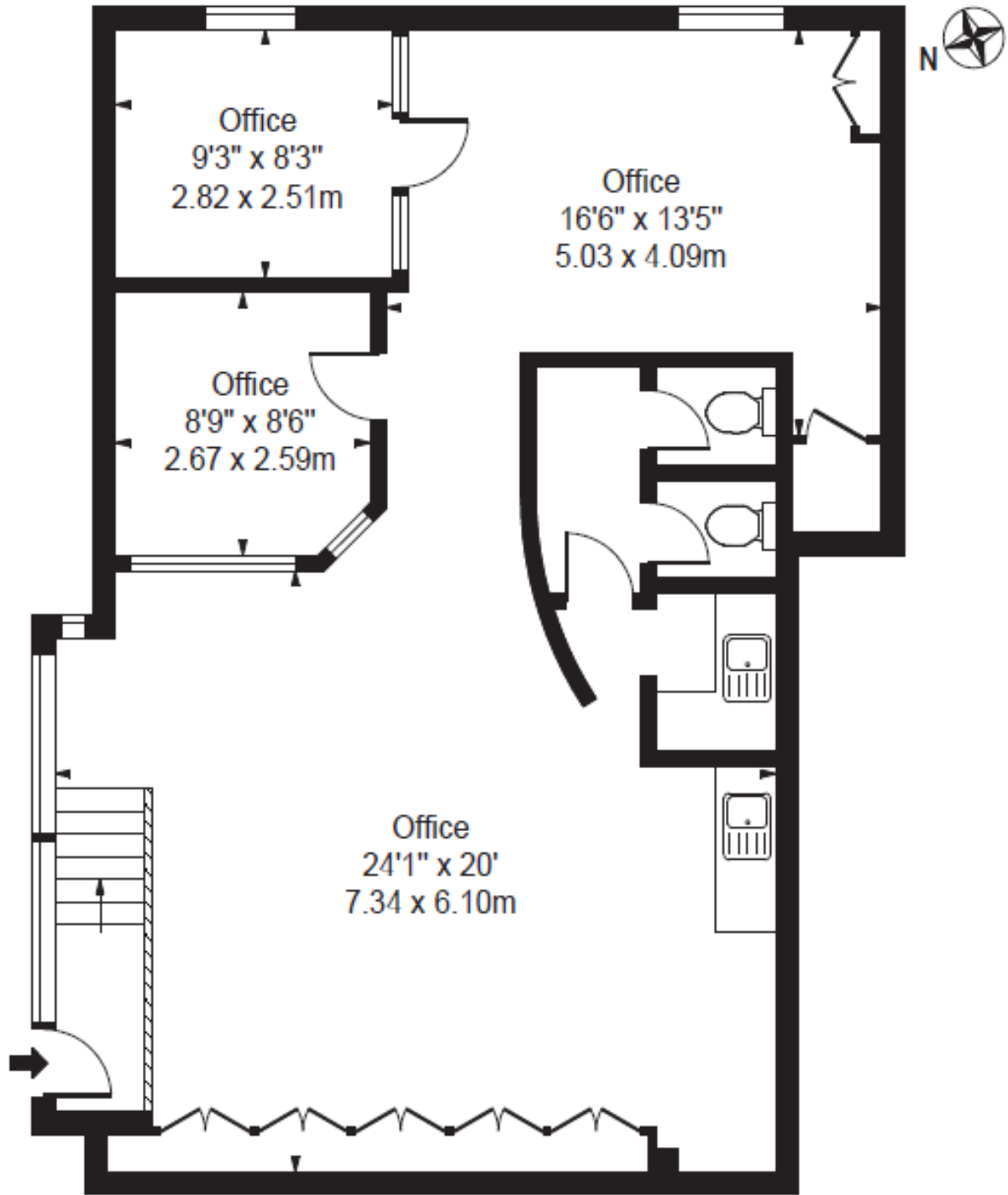


KALMARs

SOUTH LONDON'S LEADING AGENTS



All properties are offered subject to contract and availability. These particulars are believed to be correct when published, but we cannot accept any liability whatsoever for any misrepresentation made either in these particulars or orally. Intending purchasers or tenants are strongly advised to make their own enquiries to check these particulars to satisfy themselves that the property is suitable for their purchase. They may be subject to VAT.



Ground Floor