



 | **artion**  
RESIDENCE

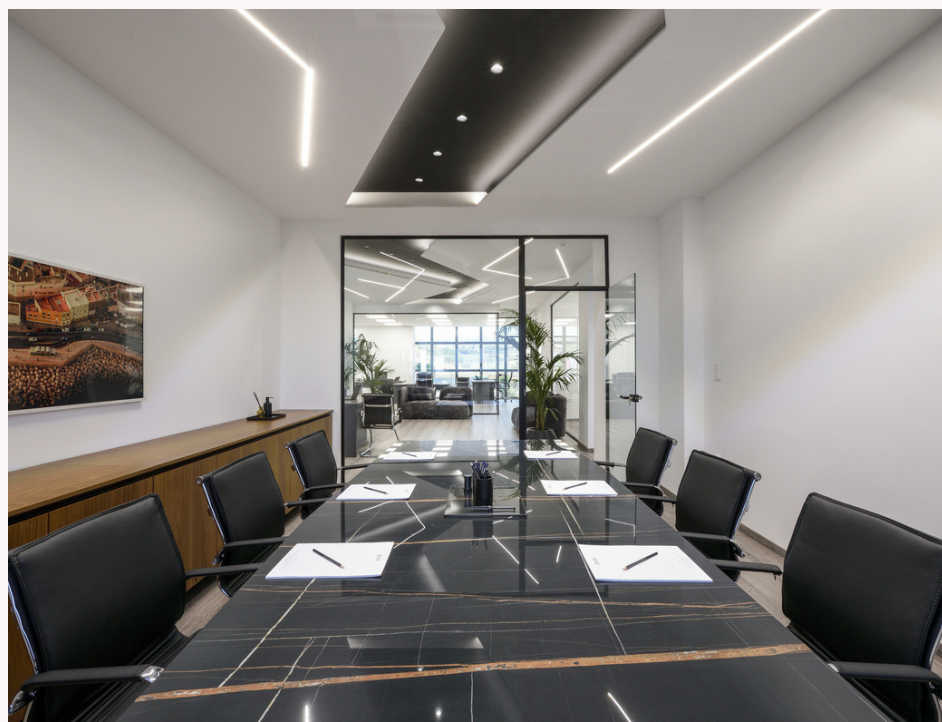
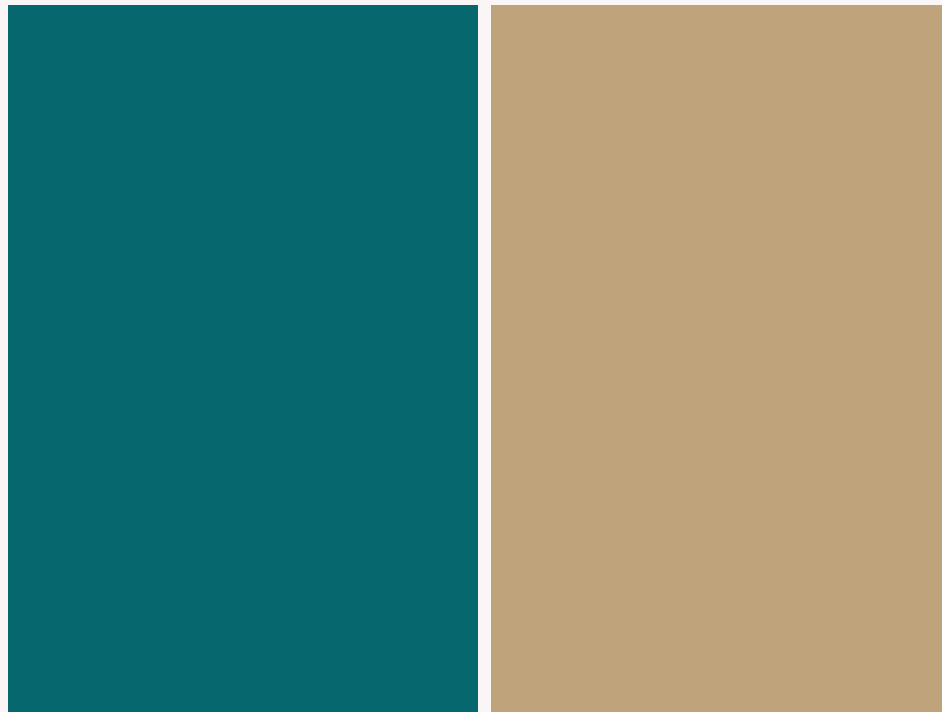


BY SOLID DEVELOPMENT



UPCOMING COMPLEX IN  
NIKITI, CHALKIDIKI

# WHO WE ARE



---

A leading construction firm with consistent growth in architecture and construction.

---

Specialized in crafting luxury residences, modern apartment complexes, and exquisite holiday retreats.

---

Powered by a team of seasoned professionals dedicated to excellence from initial design to timely completion and ongoing maintenance.

---



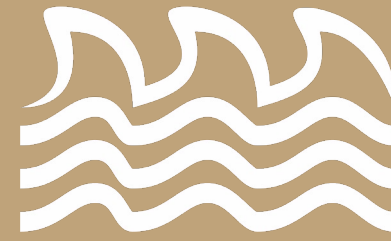
## WELCOME TO OUR PROPERTY

Discover the Artion Residence, a stunning new project located in the charming town of Nikiti, on the second peninsula of Chalkidiki Sithonia. The complex is just steps away from the sea (500 meters), with the town center only 250 meters away. Enjoy easy access to all the amenities you need, all within a short walk from your doorstep.

---



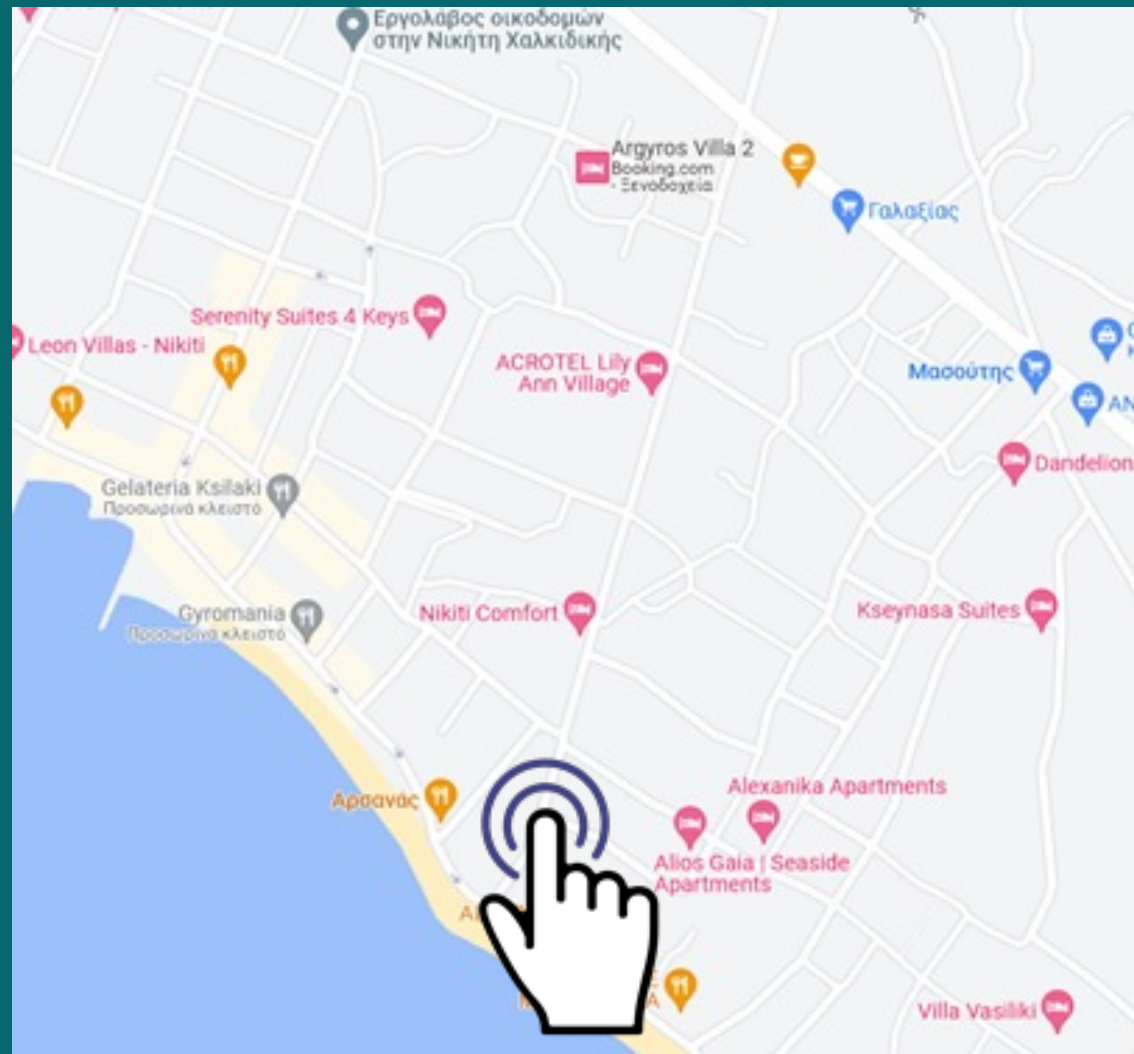
LOCATED IN THE  
SECOND PENINSULA OF  
CHALKIDIKI, SITHONIA



JUST 500 METERS  
FROM  
the sea



RIGHT IN THE HEART  
OF NIKITI,  
CHALKIDIKI.



GOOGLE MAPS



QR LOCATION

# WHY INVEST IN CHALKIDIKI?



Chalkidiki is one of the most popular tourist destinations in Greece and one of the most developed resort areas in the Balkan region.

The peninsula of Chalkidiki with its 3 «fingers»(Kassandra, Sithonia and Athos) magnetically attracts millions of tourists every year, most of them arrive from neighboring Thessaloniki city with whom it enjoys close economic, commercial and tourist ties as well as with other parts of Greece. Thessaloniki is the second largest city in Greece and as such possesses one of the busiest airports, Makedonia palace, which is only 80 km away from Sithonia. Over the last years the beauty of Chalkidiki has also attracted many tourists from China, Korea, the Arab countries and Turkey and Israel to name a few.

---



## WHY INVEST IN HALKIDIKI?

---

- Only 80 km from Thessaloniki International Airport
- Huge number of beaches that have received EU blue flags, most of them sandy
- Very well developed infrastructure with both modern towns and traditional Greek villages
- A vast part of it consists of coniferous forests and is a protected natural area
- Has dozens of marinas with modern standards for the parking of yachts up to 45 m
- One of the most internationally popular resorts in Greece, for Greek locals as well



PHOTOREALISTIC  
REPRESENTATION



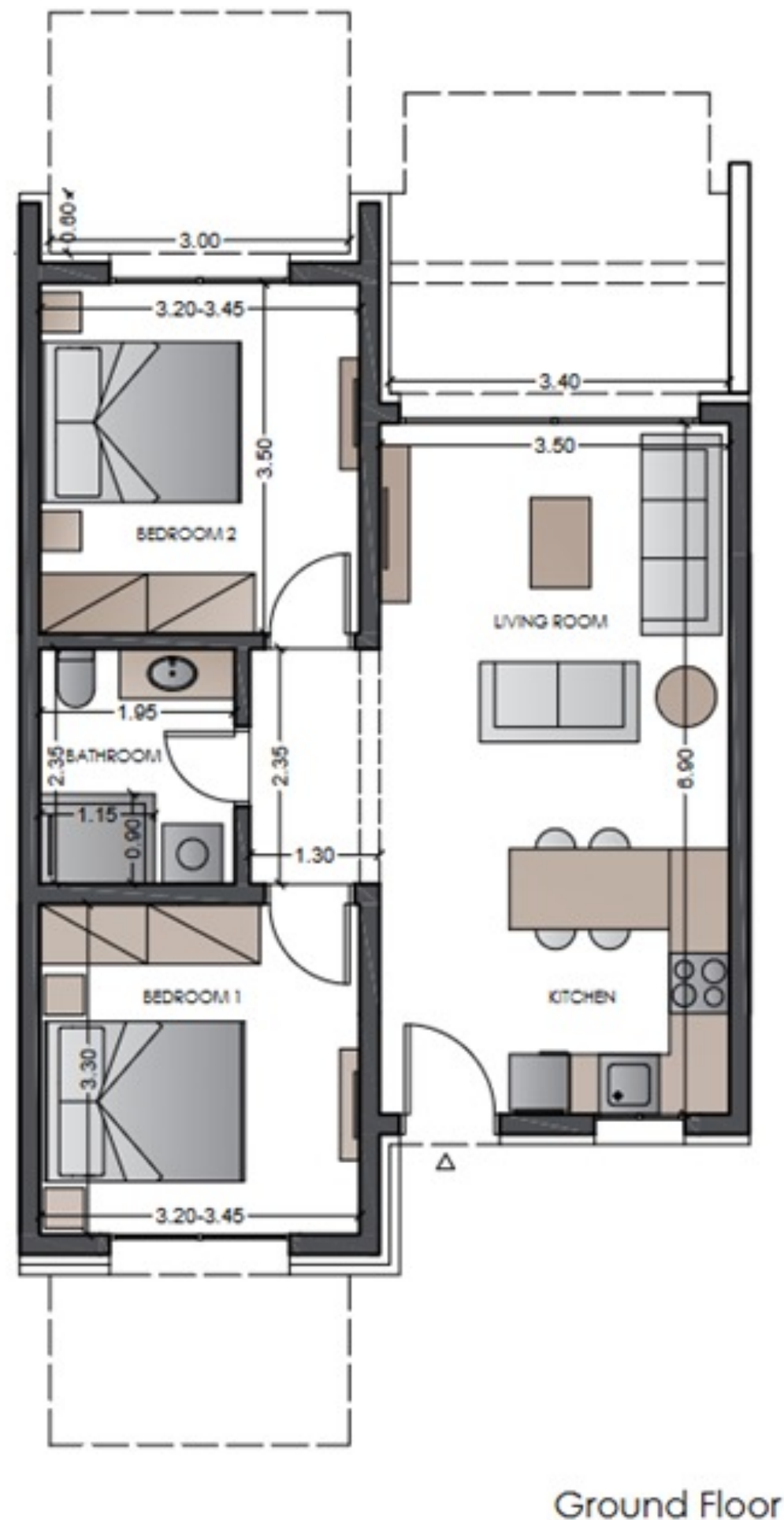


## LAYOUT

The Complex consists of:

- 36 apartments
- 2 pools
- Playground
- Barbeque area
- Parking slots
- Storage spaces
- Property maintenance services





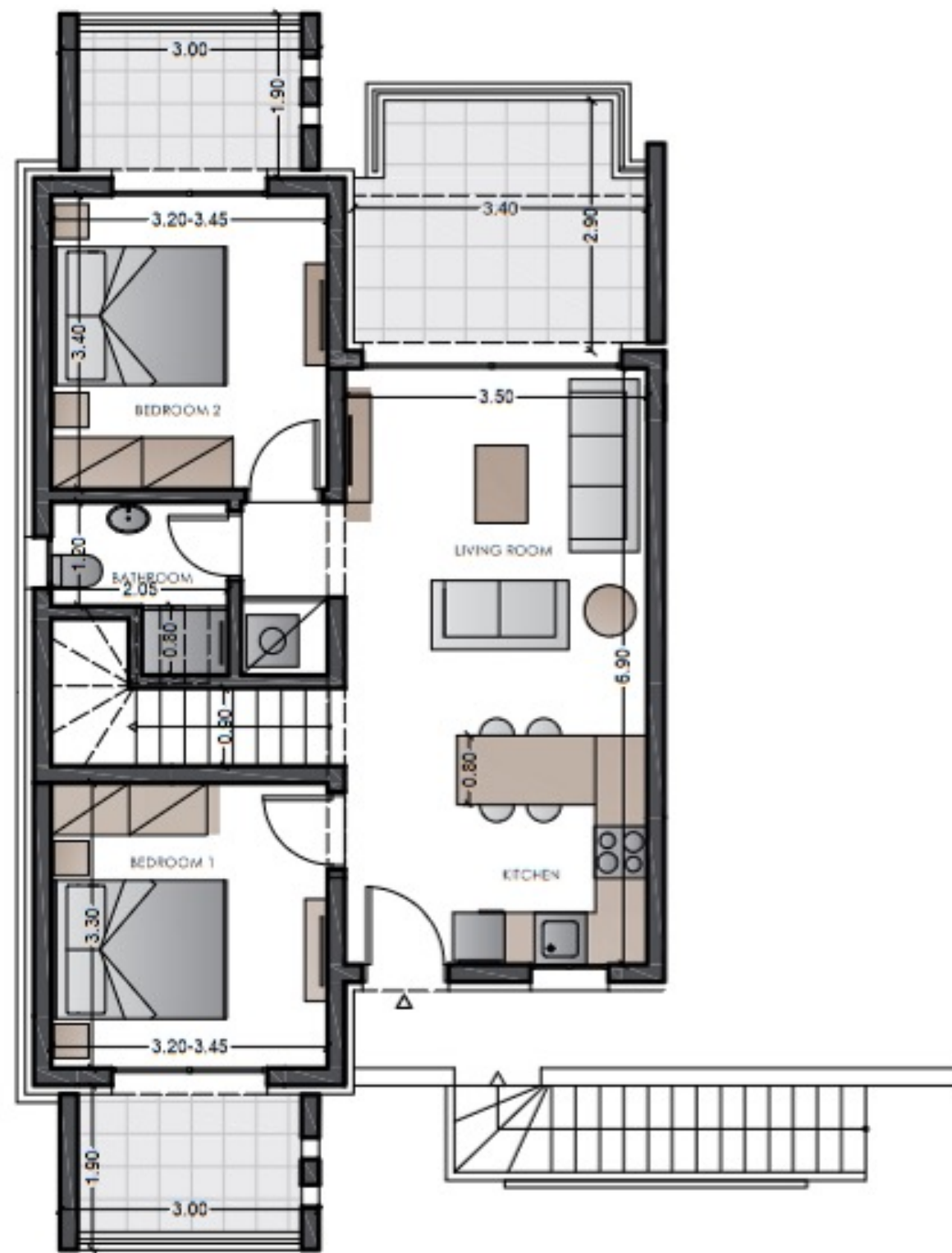
Ground Floor

# FLOOR PLAN

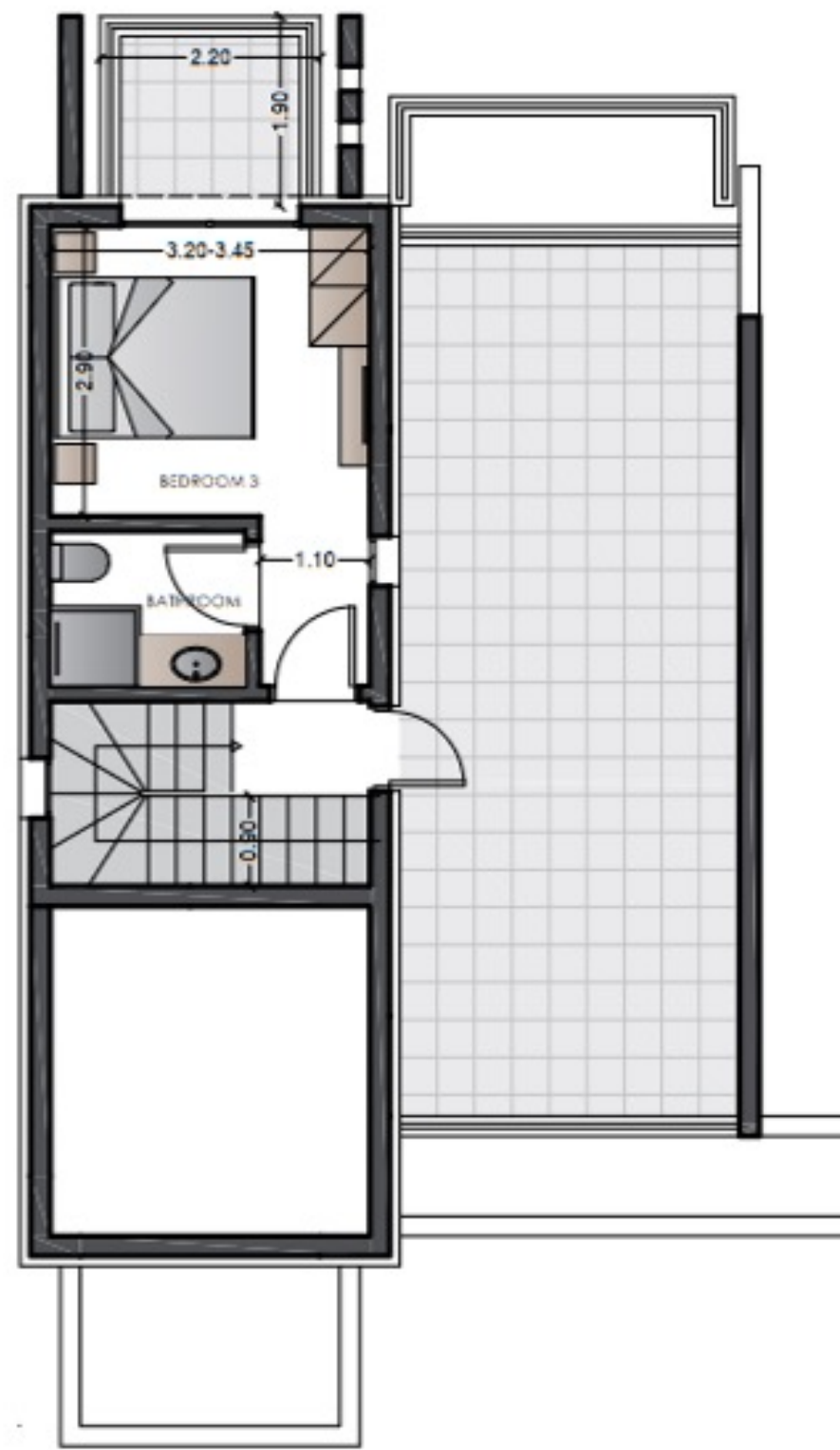
## A1, A3-A35

Price from 195.000 €

- Ground floor
- Area from 63,10 sq.m.
- Private garden area from 33 sq.m.
- 2 bedrooms
- Open concept kitchen with living room
- Bath



First Floor



Attic Floor

# FLOOR PLAN

**A2, A4-A36**

Price from 265.000€

- 2 levels
- Area from 85,72 sq.m.
- Balcony area 55,64 sq.m.
- 2 bedrooms
- Master bedroom
- Open concept kitchen & living room
- 2 baths



## ADDITIONAL FEATURES

---

- Air Condition
- Alarm
- Aluminum Frames
- Double Glazing
- Smart Home
- Solar Water Heating
- Security Doors
- Window Fly Screen

# CONTACT INFORMATION



## Location

[9 km NR Thessaloniki - Nea Moudania](#)

57001, Thermi, Greece



## Phone

Mobile: +30 6981 204204  

Office: +30 2310 365465



## Website - eMail

<http://www.solid-development.gr>

[info@solid-development.gr](mailto:info@solid-development.gr)



## Facebook

[Solid-development](#)



## Instagram

[Solid\\_development.gr](#)



THANK YOU FOR YOUR INTEREST