



[www.dpsestates.co.uk](http://www.dpsestates.co.uk)



**23 Maidstone Road, Norwich, NR1 1EA**

**£220,000**

DPS Estates are delighted to offer this fantastic investment opportunity, situated in the centre of Norwich. With tenants currently in situ, this two bedroom, modern top floor apartment will provide an instant income for any investment buyer. The accommodation comprises of a vaulted ceiling living kitchen space with full height window overlooking the communal grounds. There are two double bedrooms and modern bathroom as well as secure underground parking.

**Lounge/Kitchen/Dining Room 17'0" x 15'1"**  
**(5.2 x 4.6)**



**Bed 1 14'9" x 10'5" (4.5 x 3.2)**



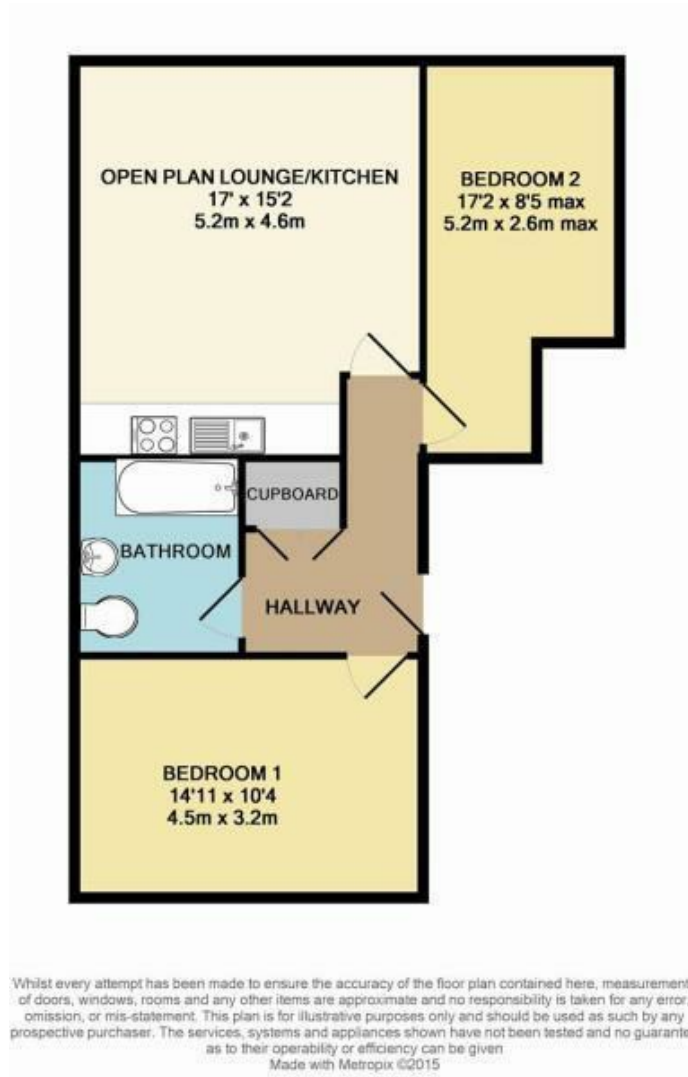
**Bed 2 17'0" x 8'6" (5.2 x 2.6)**



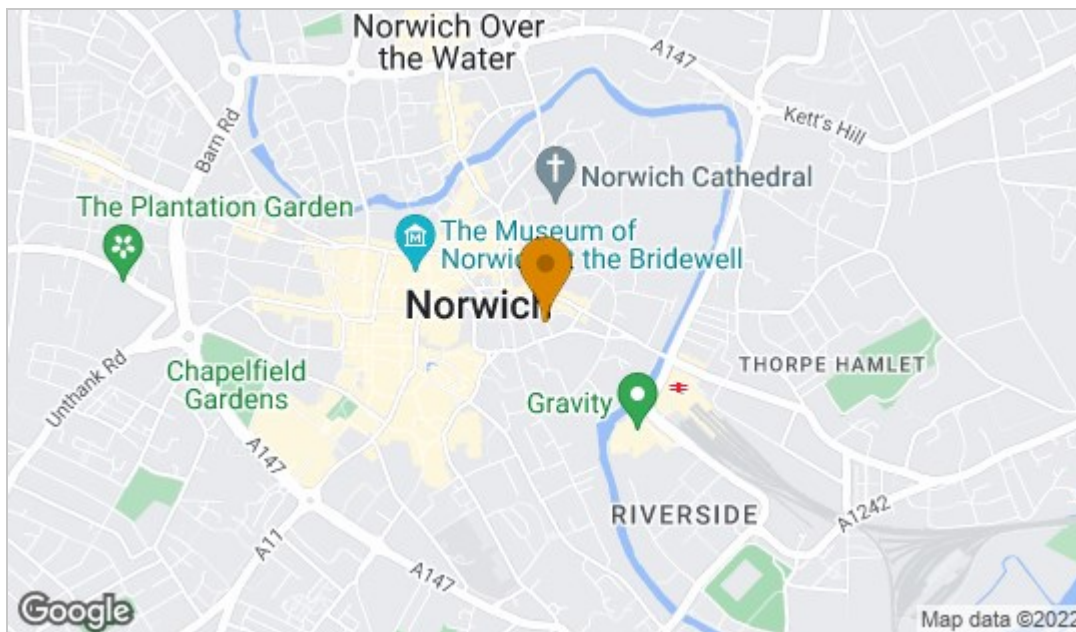
**Shower Room**



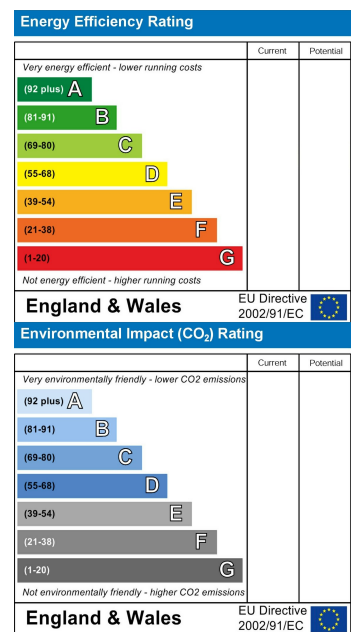
## Floor Plan



## Area Map



## Energy Efficiency Graph



These particulars, whilst believed to be accurate are set out as a general outline only for guidance and do not constitute any part of an offer or contract. Intending purchasers should not rely on them as statements of representation of fact, but must satisfy themselves by inspection or otherwise as to their accuracy. No person in this firm's employment has the authority to make or give any representation or warranty in respect of the property.



T: 01603 558 666  
 M: 07435 968375  
 E: info@dpsestates.co.uk or maintenance@dpsestates.co.uk  
 A: 48 Market Place, North Walsham, Norfolk, NR28 9BT