



101 Greyfriars Road

, Norwich, NR1 1PR

Asking price £295,000

Luxury apartment Set in the Heart of the City Centre Conisford Court has been designed by leading architects where the contemporary city living experience is combined with modern construction techniques and traditional materials to deliver a striking and well-presented exclusively-private development. The accommodation comprises of an open plan kitchen living space with stunning views, a double bedroom, master with en suite and ultra modern bathroom,

- Luxury Apartment
- 2 Double Bedrooms
- 2 Bathrooms
- Underground Secure Parking
- Fully Furnished
- City Centre

Viewing

Please contact us on 01603 558 666 if you wish to arrange a viewing appointment for this property or require further information.



2



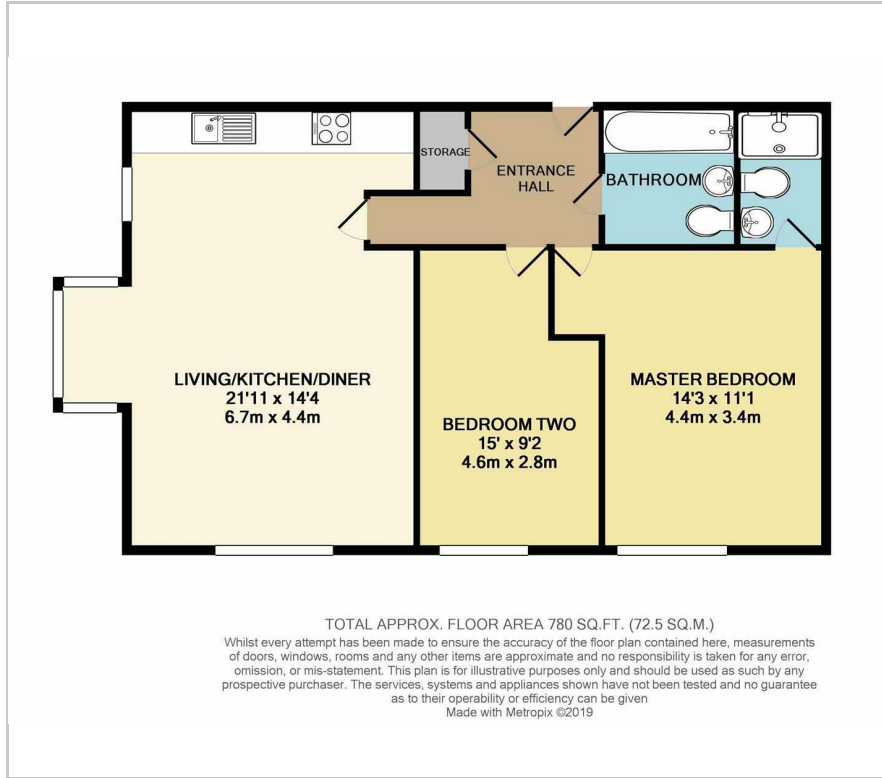
2



1



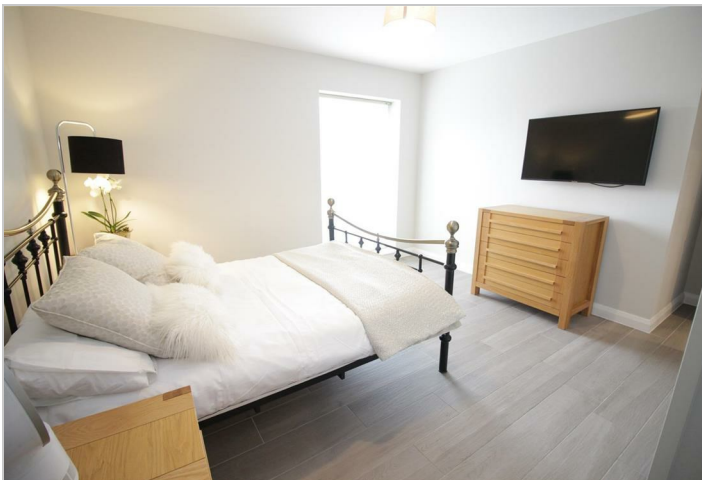
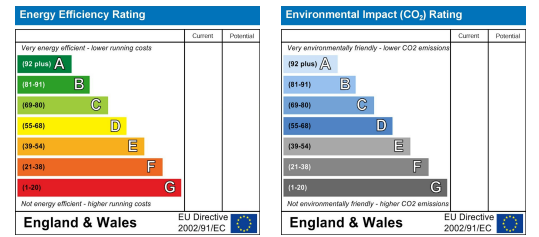
Floor Plan



Area Map



Energy Efficiency Graph



These particulars, whilst believed to be accurate are set out as a general outline only for guidance and do not constitute any part of an offer or contract. Intending purchasers should not rely on them as statements of representation of fact, but must satisfy themselves by inspection or otherwise as to their accuracy. No person in this firm's employment has the authority to make or give any representation or warranty in respect of the property.

T: 01603 558 666

M: 07369213457

E: david@musgroveandcoestates.co.uk

A: 48 Market Place, North Walsham, Norfolk, NR28 9BT