



## **Chapters Park Lane, Norwich, NR2 3EQ**

**£2,500 Per month**

Musgrove & Co are delighted to offer the epitome of modern living. This stunning Townhouse is arranged over three stories and offers a generous open plan kitchen/living room/Dining Room, Study, Utility Room and WC. The second floor offers two double bedrooms and shower room. The third floor boasts a master with en suite. The exterior boasts a stunning roof terrace with panoramic views of the City. The juxtaposition between the historic buildings character features and the modern interiors are definitely something to be admired.

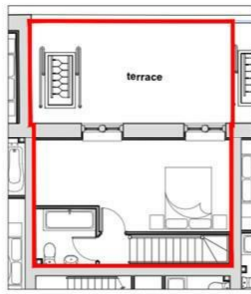
CHAPTERS offers an attractive, mixed range of properties in one exclusive development, to suit many tastes and budgets, from one-bedroom flats to four-storey townhouses.

Each property blends careful restoration to retain historic character, with modern touches for quality city living. All have stylish, contemporary interiors, high-specification kitchen appliances and bathroom suites, superfast broadband capability, and are set within intelligent, architect-designed internal spaces.

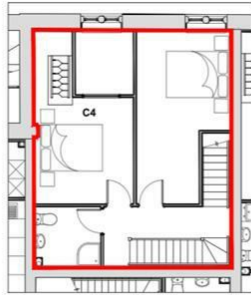
Thriving nearby loan cycle and car club-schemes, and excellent local, national and international transport networks are close by. So whether you work from home, commute or are just enjoying your leisure, CHAPTERS offers complete flexibility for every lifestyle.;



# Floor Plan



Second floor plan  
Scale 1:100 at A3



First floor plan  
Scale 1:100 at A3

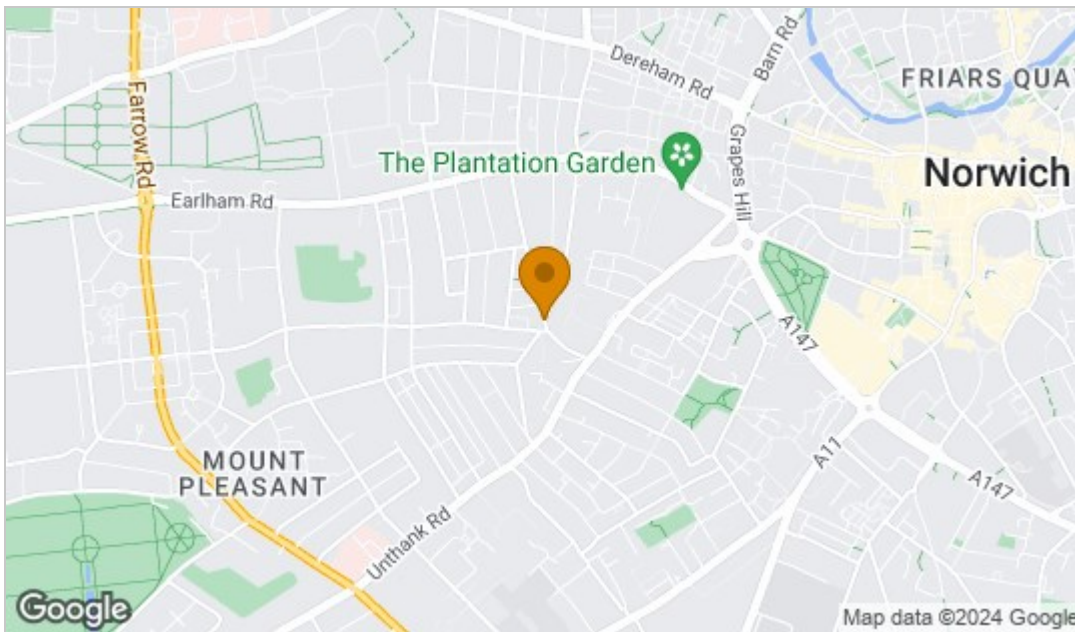


Ground floor plan  
Scale 1:100 at A3



Location plan  
Scale 1:1250 at A3

# Area Map



# Energy Efficiency Graph

| Energy Efficiency Rating  |  | Current                 | Potential |
|---|--|-------------------------|-----------|
| Very energy efficient - lower running costs                     |  |                         |           |
| (92 plus) <b>A</b>  |  |                         |           |
| (81-91) <b>B</b>  |  |                         |           |
| (69-80) <b>C</b>  |  |                         |           |
| (55-68) <b>D</b>  |  |                         |           |
| (39-54) <b>E</b>  |  |                         |           |
| (21-38) <b>F</b>  |  |                         |           |
| (1-20) <b>G</b>   |  |                         |           |
| Not energy efficient - higher running costs                     |  |                         |           |
| <b>England &amp; Wales</b>                                      |  | EU Directive 2002/91/EC |           |
| Environmental Impact (CO <sub>2</sub> ) Rating                  |  | Current                 | Potential |
| Very environmentally friendly - lower CO <sub>2</sub> emissions |  |                         |           |
| (92 plus) <b>A</b>  |  |                         |           |
| (81-91) <b>B</b>  |  |                         |           |
| (69-80) <b>C</b>  |  |                         |           |
| (55-68) <b>D</b>  |  |                         |           |
| (39-54) <b>E</b>  |  |                         |           |
| (21-38) <b>F</b>  |  |                         |           |
| (1-20) <b>G</b>   |  |                         |           |
| Not environmentally friendly - higher CO <sub>2</sub> emissions |  |                         |           |
| <b>England &amp; Wales</b>                                      |  | EU Directive 2002/91/EC |           |

These particulars, whilst believed to be accurate are set out as a general outline only for guidance and do not constitute any part of an offer or contract. Intending purchasers should not rely on them as statements of representation of fact, but must satisfy themselves by inspection or otherwise as to their accuracy. No person in this firm's employment has the authority to make or give any representation or warranty in respect of the property.



T: 01603 558 666  
M: 07369213457  
E: david@musgroveandcoestates.co.uk  
A: 48 Market Place, North Walsham, Norfolk, NR28 9BT