



ALEXANDER RUMSEY  
REAL ESTATE



## Summer Close, Byfleet, KT14

Offers Over £775,000

🛏 3 🚿 2 🛋 3





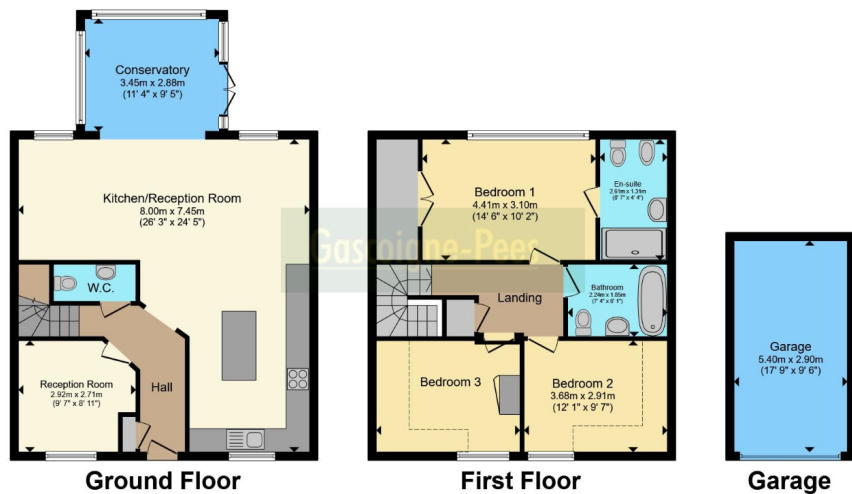
Perfect for families or professionals seeking a peaceful lifestyle with stunning rural views, this beautifully updated home promises a wonderful balance of countryside living with modern comforts. Arrange your viewing today to discover everything this special property has to offer!

Set within an exclusive gated community, this beautifully presented home offers a fantastic blend of style, comfort, and practical living, all set against the backdrop of far-reaching views across protected trust land. The heart of the property is the open-plan living space, which is flooded with natural light and flows effortlessly through to a charming conservatory, complete with underfloor heating, where panoramic views across the meadows create an ideal setting for both quiet evenings and entertaining friends. The recently renovated kitchen is thoughtfully designed with a stylish central island perfect for casual dining, alongside a range of modern wall and floor units providing generous storage. A Quooker instant hot water tap, double oven, and gas hob make this kitchen both attractive and functional. Off the living area, a separate study provides a quiet retreat for home working or creative hobbies, further enhancing the flexibility of the home. Upstairs, the master bedroom enjoys breathtaking views over the surrounding fields and features its own private en-suite bathroom, offering a peaceful sanctuary at the end of the day. Two further good-sized bedrooms are accessed via a spacious landing and share a contemporary family bathroom, finished to a high standard. Outside, the rear garden offers a low-maintenance yet beautiful space to unwind, with the rural backdrop providing a real sense of tranquillity, perfect for those seeking a semi-rural feel. For added convenience, there is generous parking for five vehicles, including an EV charger, alongside a garage situated within the development, ideal for families with multiple cars or visitors.

This home enjoys an enviable location within a select development of just twenty-seven properties, built by Rectory Homes in 2007, and enjoys private access to the stunning Surrey Wildlife Trust Land. Families will appreciate the close proximity to highly regarded local schools, while excellent transport links ensure easy access to neighbouring towns and London.







Total floor area 145.2 m<sup>2</sup> (1,563 sq.ft.) approx

- Sought-After Gated Development
- Immaculate Condition
- Three Double Bedrooms
- Separate Garage
- Must-See Property
- Stunning Countryside Views & Picturesque Setting
- Spacious Open Plan Kitchen / Diner / Lounge
- En-Suite To The Main Bedroom & Family Bathroom
- High Quality Finish Through-Out



*Your Journey, Our Priority*

01932 925 050 | [sales@arrealestate.co.uk](mailto:sales@arrealestate.co.uk) | [www.arrealestate.co.uk](http://www.arrealestate.co.uk)