



84



ALEXANDER RUMSEY
REAL ESTATE

New Haw Road, New Haw, KT15

Offers Over £323,400

🛏️ 2 🚿 2 🛋️ 1



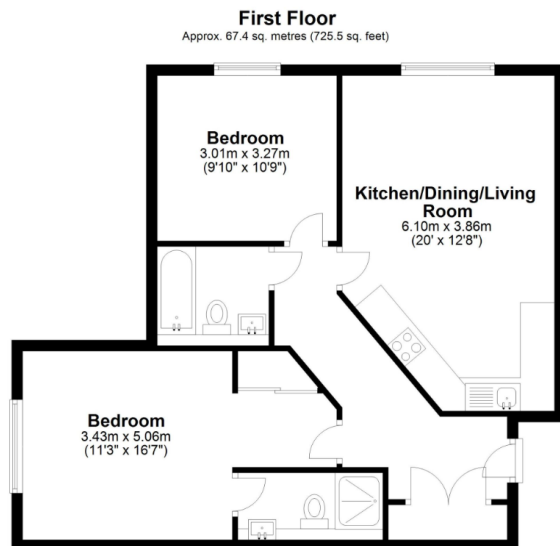
A truly stunning two-bedroom, two-bathroom first-floor apartment, built in 2018, set in a highly sought-after gated block. Offering over 725 sq ft of luxurious living space, this contemporary home boasts a bright and expansive 20' x 12'8" open-plan living, dining, and kitchen area, with idyllic views overlooking peaceful fields - ideal for both relaxing and entertaining.

The impressive 16'7" master bedroom features a private en-suite shower room, providing a serene sanctuary. The property is set within a highly secure, modern development, with a secure entry phone system and beautifully maintained communal areas, adding to the overall high-spec finish of the building.

With a 243-year lease and no onward chain, this apartment offers long-term peace of mind. The gated car park provides one allocated parking space, plus four visitors' spaces, while the development itself exudes an air of exclusivity and modern sophistication.

Conveniently positioned between Addlestone town center and New Haw village, this property perfectly combines the benefits of excellent local amenities with the tranquility of its surroundings. Energy Performance Certificate (EPC) rating: B.





Total area: approx. 67.4 sq. metres (725.5 sq. feet)

- Sought-After Development
- High Specification Finish
- Two Double Bedrooms
- 20.ft Open Plan Kitchen / Lounge
- Entry Phone System
- Gated & Secure Allocated Parking
- Built in 2018
- Spacious Family Bathroom & En-Suite To The Main Bedroom
- Idyllic Views Overlooking Fields
- EPC B

