



Old Farm Road, Guildford, GU1

Guide Price £400,000

🛏️ 2 🚿 2 🚗 1



Situated within a gated, exclusive development of just nine residences built in 2022, this stunning penthouse represents the pinnacle of luxury living in Guildford. Located in a quiet yet convenient residential area close to the vibrant historic town center, this home offers an exceptional blend of comfort, style, and sophistication.

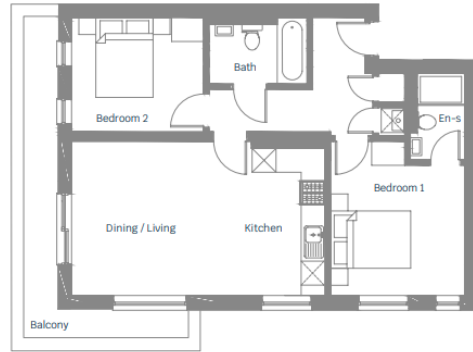
Spanning over 750 square feet, this top-floor residence is designed with an emphasis on expansive, light-filled spaces. The open-plan living and dining area exudes modern elegance, enhanced by a refined Farrow and Ball inspired color palette that creates a serene and harmonious atmosphere throughout the home.

The bespoke German kitchen is a standout feature, showcasing true handleless design with sleek quartz stone worktops and integrated Neff appliances, marrying aesthetics with high functionality. The bathrooms are equally impressive, featuring designer Porcelanosa tiles on both the walls and floors, along with premium sanitaryware that provides a spa-like retreat within the home.

This property also offers a generous dual aspect private terrace, perfect for enjoying panoramic views of the surrounding area. In keeping with contemporary eco-conscious living, the building features green sedum roofs that help maintain a cool, clean environment, complemented by UV solar panels for low-cost electricity generation. Practical amenities include an allocated parking space, EV charging, and convenient cycle storage.

Living within this gated development not only ensures privacy and security but also provides a serene and exclusive environment for residents. This residence is more than just a home; with its unparalleled design, luxury finishes, and private outdoor space, this property sets the standard for refined living.





Kitchen/Dining	3.10m x 3.68m	10'1" x 12'1"
Living Room	3.26m x 3.86m	10'7" x 12'6"
Bedroom 1	3.36m x 3.86m	11'0" x 12'6"
Bedroom 2	3.31m x 2.86m	10'8" x 9'4"
Total	65m²	699ft²

WEYFIELD COURT

- Exclusive Gated Development
- Immaculate Condition
- Two Double Bedrooms
- En-Suite To Main Bedroom
- Stunning Views
- Penthouse With Dual Aspect Balcony
- Easy Access To Guildford Town Centre
- Generous Family Bathroom
- Open Plan Kitchen/Lounge
- Allocated Parking With EV Charging

