



AR

ALEXANDER RUMSEY
REAL ESTATE

Binfield Close, Byfleet, KT14

Offers Over £465,000

3 1 1



This beautifully maintained 3-bedroom mid-terraced home, tucked away in a quiet cul-de-sac in Byfleet Village, is perfect for young families looking to upsize or couples seeking a spacious, modern home. Immaculately presented, the property is part of a sought-after small development that offers both privacy and convenience.

Ideally located just a short stroll from Byfleet Village Green, local shops, and the Village Primary School, this home is also near Brooklands Superstores (Tesco and Marks & Spencer) and offers easy access to the A3 and M25 for excellent transport links.

The interior features a spacious hallway with ample storage, including custom under-stair cupboards. The bright sitting room, with French doors opening onto the garden, offers space for both relaxation and dining. The modern kitchen is well-equipped with high-quality integrated appliances.

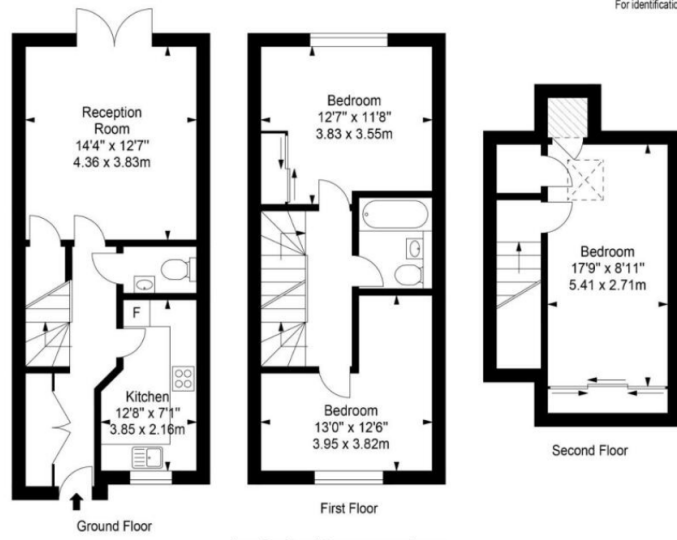
Upstairs, you'll find three spacious double bedrooms, including a master with large built-in wardrobes, and a generous family bathroom.

Outside, the southerly facing private rear garden includes a patio area, perfect for outdoor dining, and a garden shed for extra storage. The property also benefits from allocated parking, a communal brick-built bike shed, and a bin store. Solar panels further enhance the home's energy efficiency.

This home is an outstanding opportunity for those seeking a blend of modern living and prime location.



Approximate Area = 1024 sq ft / 95.17 sq m
For identification only - Not to scale



Every attempt is made to assure accuracy, however measurements are approximate and for illustrative purposes only. Not to scale.

- Immaculate Condition
- Short Walk From All Local Amenities
- Three Double Bedrooms
- Modern Kitchen / Diner
- Patio Area
- Sought-After Location
- Small Development
- Generous Family Bathroom
- Southerly Facing Private Rear Garden
- Solar Panels Fitted

