



St. Martins Mews, Pyrford, Woking, GU22 8TE

£650,000

3 2 2



Welcome to this stunning three-bedroom end of terrace house nestled in the exclusive gated development of St Martin's Mews in Pyrford. Perfectly designed for a local family looking to upsize or anyone desiring a safe and secure environment, this property offers a unique blend of comfort, luxury, and tranquility.

The convenience of a private driveway and a spacious garage ensures ample parking and storage space. The property boasts three well-appointed bedrooms, offering plenty of space for family living. A modern family bathroom caters to the needs of the household with style and efficiency, while the main bedroom features an en-suite bathroom, providing a private sanctuary for relaxation.

Enjoy the versatility of two reception rooms, one of which has been added by the current vendor and is currently used as a study. This additional space is perfect for entertaining guests or creating a comfortable home office. The beautifully landscaped, secluded rear garden and patio area provide an idyllic setting for outdoor relaxation and family gatherings.

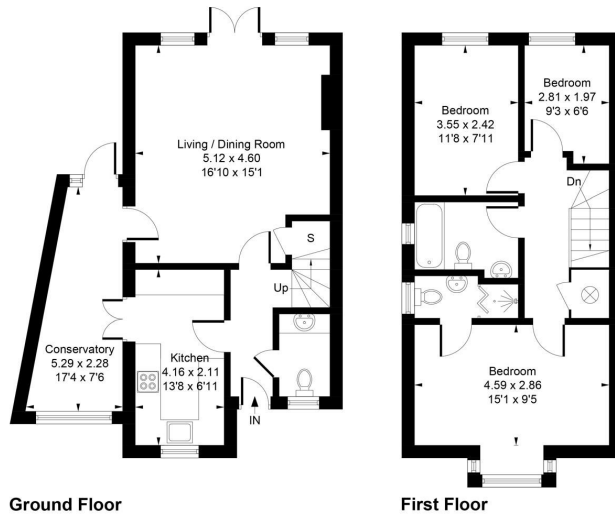
Surrounded by 22 acres of lush parkland, this property offers a serene environment and plenty of space for outdoor activities.

Situated in the highly desirable area of Pyrford, this home provides easy access to local amenities, reputable schools, and excellent transport links. Pyrford is within close proximity to West Byfleet and Woking train stations, offering swift connections to central London. Additionally, the A3 and M25 are easily accessible, ensuring convenient travel to surrounding areas and beyond.

This exquisite home is ideal for those seeking a secure, family-friendly lifestyle in one of Pyrford's most prestigious developments. Don't miss the opportunity to make this exceptional property your own.



Approximate Gross Internal Area = 96.82 sq m / 1042 sq ft



Ground Floor

First Floor

Whilst every attempt has been made to ensure the accuracy of the floor plan contained here, measurements of doors, windows, rooms and any other items are approximate and no responsibility is taken for any error, omission, or mis-statement. This plan is for illustrative purposes only and should be used as such by any prospective purchase.

- Exclusive Gated Development • Sought-After Location
- Driveway
- Family Bathroom
- Two Reception Rooms Including Separate Study
- Secluded Rear Garden And Patio Area
- Three Bedrooms
- En-Suite To Main Bedroom
- Garage
- Private Grounds Of 22 Acres Of Parkland And Two Tennis Courts

