



AR

ALEXANDER RUMSEY

Selbourne Avenue, New Haw, Addlestone, KT15 3RD

£700,000

3 1 1



Alexander Rumsey Real Estate are pleased to present to the market this impeccable three-bedroom bungalow in a quiet corner of Selbourne Avenue. The property boasts an established garden and a convenient garage. The front garden features a meticulously maintained artificial lawn adorned with mature shrubs in the corners. A driveway leads to the garage, while a pathway guides you to the front door.

Inside, the bungalow offers light-filled, airy living spaces, highlighted by a generously proportioned living/dining room. Large windows overlook the rear garden, and a glass panel door provides direct access. The room's centerpiece is a classic period-style fire surround with an elegant electric faux fire, adding a touch of sophistication.

The kitchen, measuring an impressive 15' x 8'9", is beautifully fitted with smart white paneled units and boasts a built-in electric double oven, electric hob, and stainless steel extractor hood. It offers ample storage space and currently houses a dishwasher, washing machine, and dryer within its attractive units.

This charming bungalow features three double bedrooms, a modern shower room, and a separate guest toilet. The master bedroom is equipped with light pine built-in wardrobes, providing ample storage. Additionally, the 19' x 10' garage is accessible both from inside the bungalow and from the garden.

The rear garden is a tranquil retreat, centered around an artificial lawn with a decorative flower bed. It is surrounded by paving stones and bordered with a variety of trees and shrubs, designed to be visually appealing with minimal upkeep. Behind the garage, a generous-sized shed offers additional storage, complemented by a smaller shed in the garden's far corner.

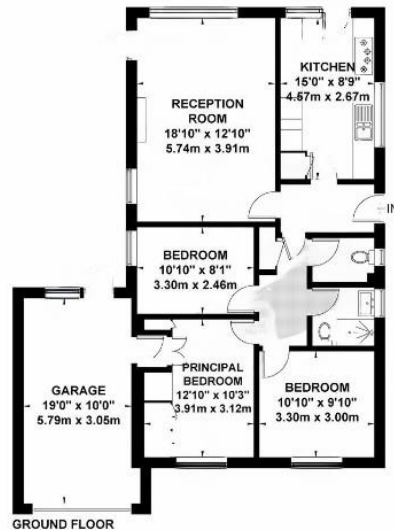
Combining elegance, functionality, and low maintenance, this property is the perfect home for those seeking comfort and convenience in a peaceful location.

We highly recommend a viewing!



Selbourne Avenue, Addlestone

Approximate Gross Internal Area = 101.8 sq m / 1095 sq ft
(Including Garage)



- Quiet Sought-After Location
- Short Walk To New Haw & West Byfleet High Streets
- Immaculate Condition
- Detached
- Three Double Bedrooms
- Modern Family Bathroom
- Substantial Kitchen
- Garage
- Private Rear Garden
- Driveway

