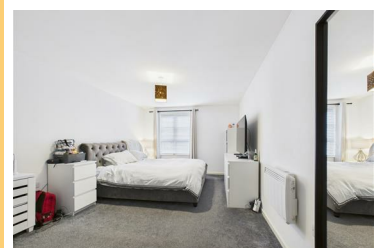




1 Coopers Yard Paynes Park, Hitchin, SG5 1AR £1,500 PCM



Two bedroom ground floor apartment in the sought after Coopers Yard development right in the heart of Hitchin's Town Centre, two bedrooms, master with en suite, open plan living room to kitchen with doors leading to private patio area, main bathroom, allocated underground parking. Available 14th January . EPC Rating D (68)



- Sought after location
- two bedrooms,
- Second bedroom
- Kitchen with appliances
- Allocated parking underground
- Ground floor apartment
- Master with ensuite
- Open plan living room
- Private patio
- Available 14th January