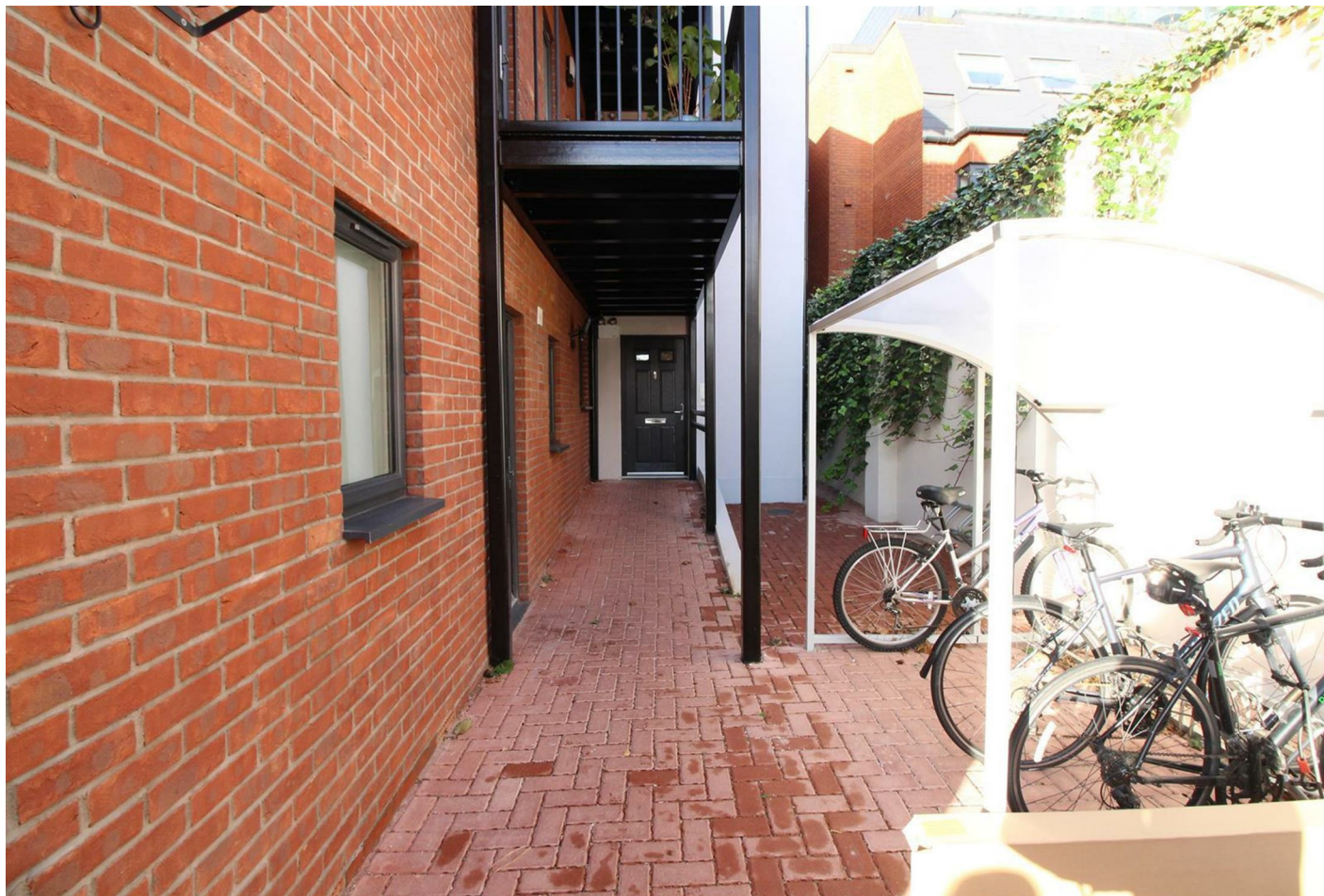
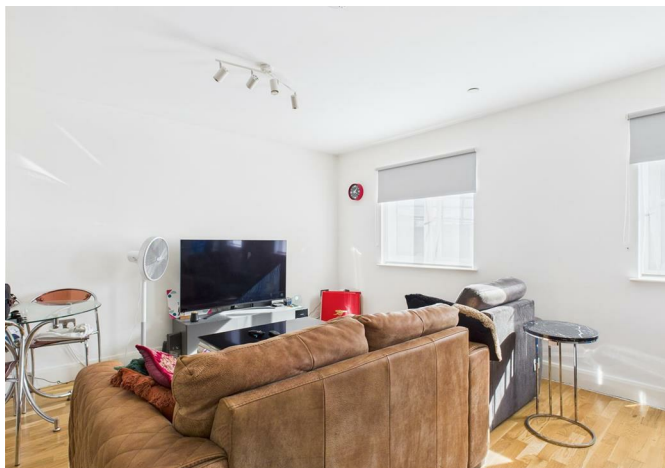




THE
PROPERTY
QUARTER



Poppy House Paynes Park, Hitchin, SG5 1EZ
£269,500



Poppy House Paynes Park, Hitchin, SG5 1EZ

£269,500

This delightful two bedroom apartment is situated on the ground floor of a small, modern purpose built block, right in the heart of the town centre. The light interior boasts double aspect views and benefits from a fully fitted kitchen, a modern tiled bathroom and plenty of storage space. All of Hitchin's wide variety of shops , cafes and restaurants are all within easy reach from this prime, central location.

The block itself was built only a few years ago and therefore the lease term is long with relatively low outgoings.

This apartment would make both an ideal first time purchase and a solid rental investment (currently let at £1,200 p.c.m) and we certainly would recommend an early viewing as soon as possible.



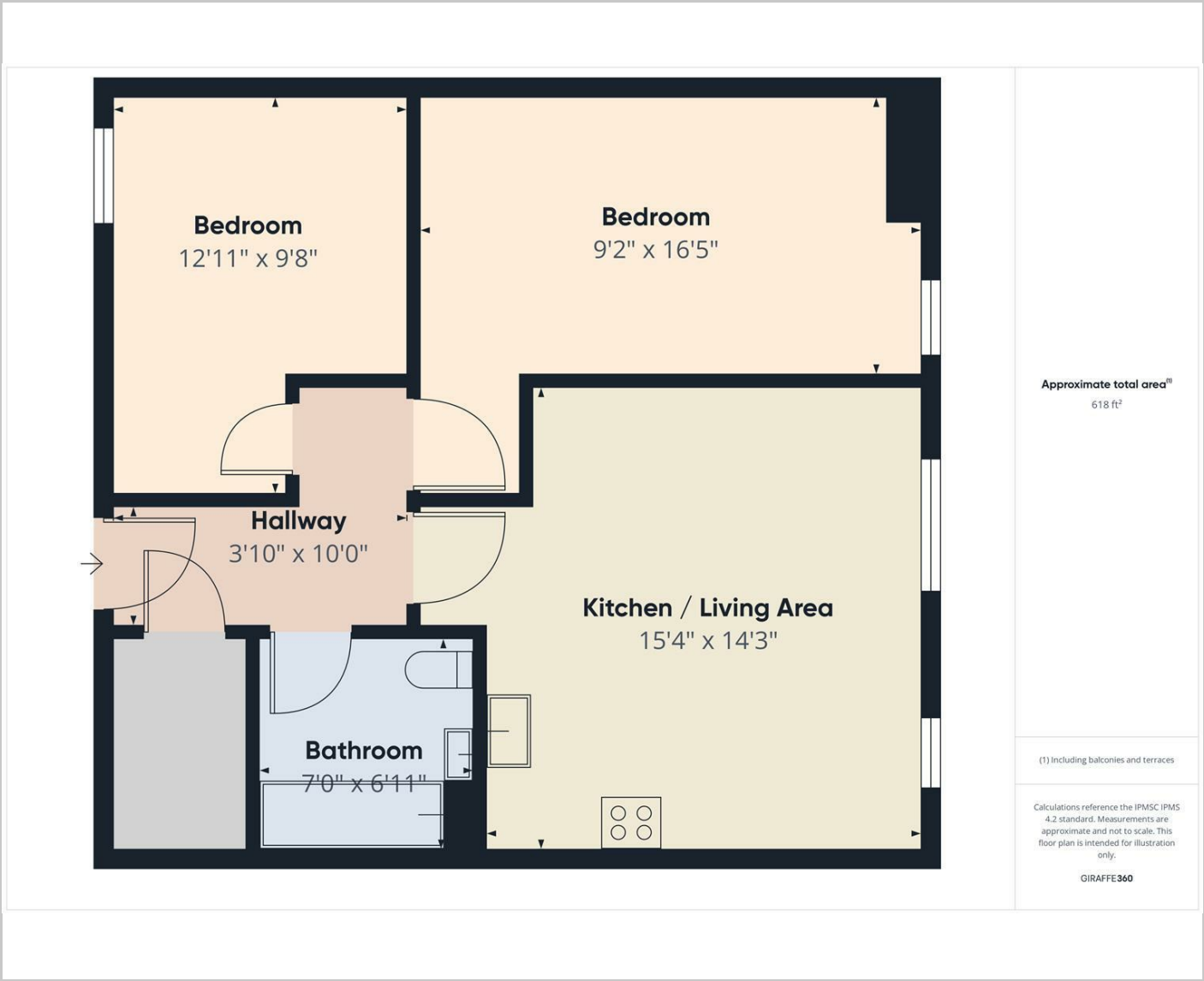
Features

- Two Good Size Bedrooms
- Ground Floor
- Town Centre Location
- Good Condition Throughout
- Modern Fully Fitted Kitchen
- Long Lease Term
- Chain Free

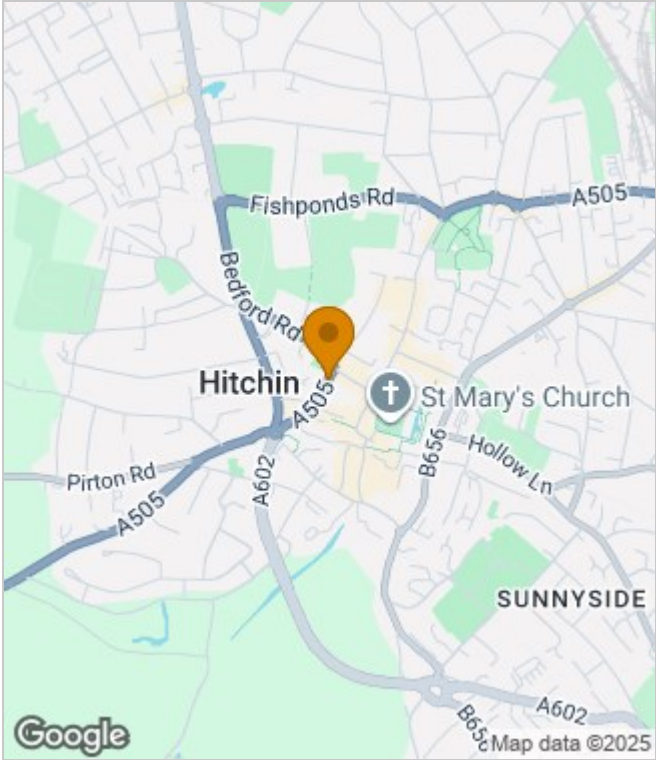


Council Tax Band: C
Floor Area: 656.60 sq ft
EPC Rating: B
Tenure: Leasehold

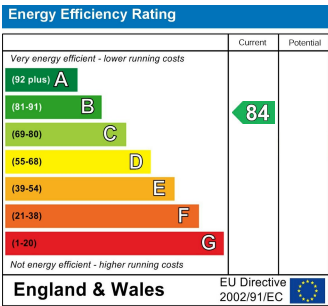
Floor Plans



Area Map



Energy Performance Graph



These particulars, whilst believed to be accurate are set out as a general outline only for guidance and do not constitute any part of an offer or contract. Intending purchasers should not rely on them as statements of representation of fact, but must satisfy themselves by inspection or otherwise as to their accuracy. No person in this firms employment has the authority to make or give any representation or warranty in respect of the property.