



THE
PROPERTY
QUARTER



36 Coopers Yard, Paynes Park, Hitchin, SG5 1AR
£275,000



36 Coopers Yard, Paynes Park, Hitchin, SG5 1AR

£275,000

This well-maintained and modern two bedroom apartment is situated on the second floor of an extremely popular, warehouse style, purpose built block, right in the heart of the town centre. Consequently, all of Hitchin's wide variety of shops, cafes and restaurants are at your fingertips, as well as local schools and parks.

The interior accommodation has been kept in excellent condition and benefits from features such as an en-suite shower room, fully fitted kitchen, Juliet balcony and ample storage space.

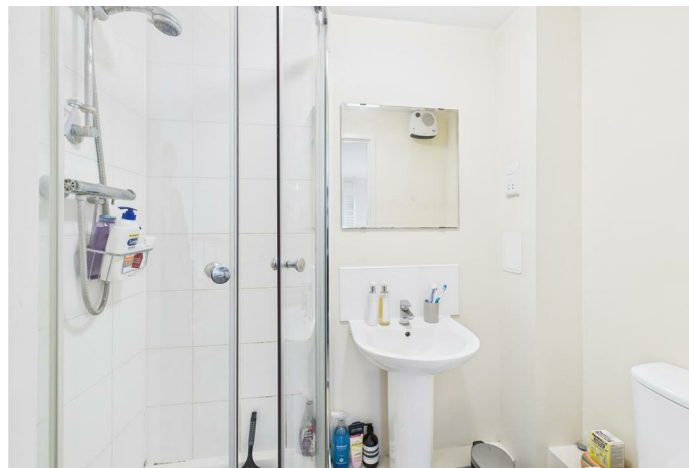
There is also the added advantage of an allocated parking space in the underground car park below. Offered with vacant possession or with the current tenant in situ, this apartment would make either an ideal rental investment or first time buyer purchase. An early viewing is thoroughly recommended,



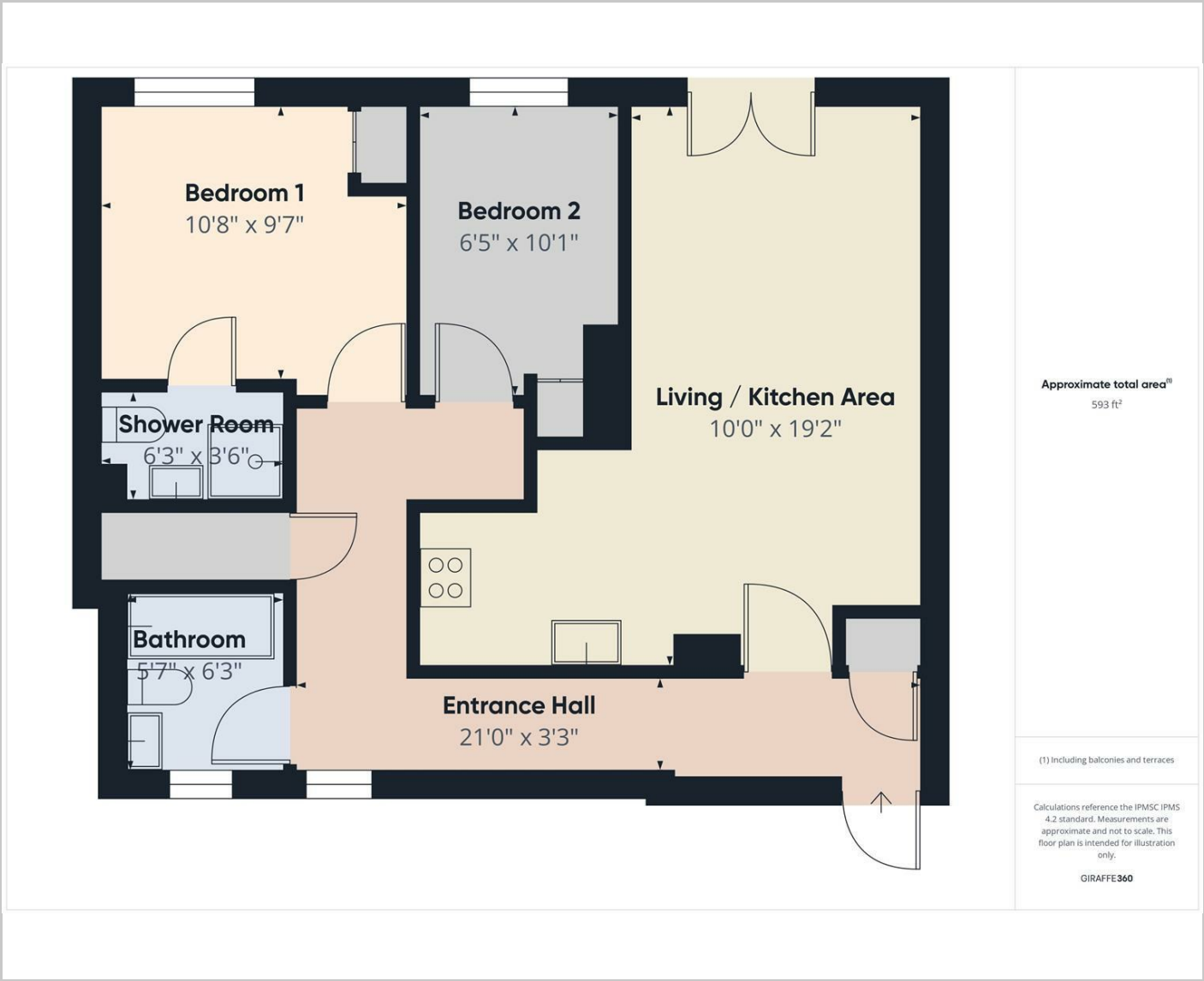
Features

- Two Good Size Bedrooms
- Two Bathrooms
- Generous Lounge / Kitchen Area
- Good Condition Throughout
- Ample Storage Space.
- Allocated Underground Parking
- Long Lease
- Town Centre Location
- Popular Warehouse Style Development

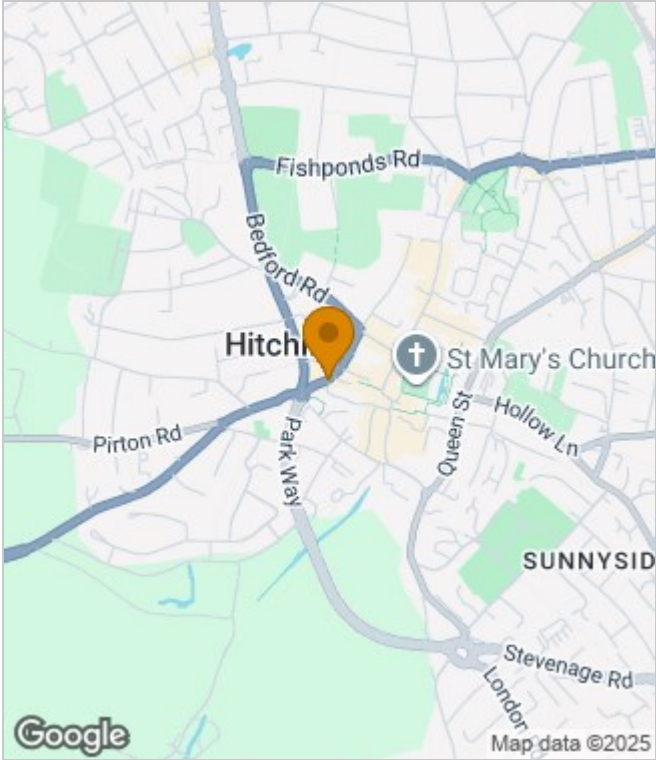
Council Tax Band: C
Floor Area: 688.90 sq ft
EPC Rating: C
Tenure: Leasehold



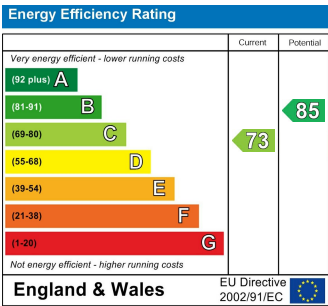
Floor Plans



Area Map



Energy Performance Graph



These particulars, whilst believed to be accurate are set out as a general outline only for guidance and do not constitute any part of an offer or contract. Intending purchasers should not rely on them as statements of representation of fact, but must satisfy themselves by inspection or otherwise as to their accuracy. No person in this firms employment has the authority to make or give any representation or warranty in respect of the property.