



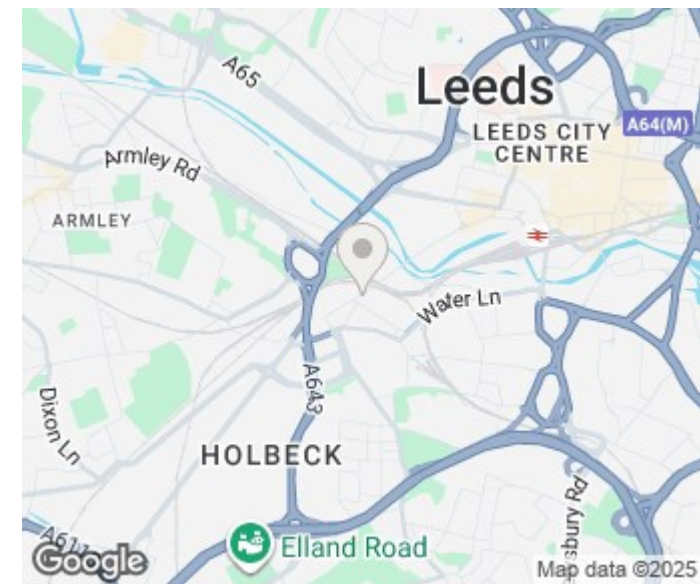
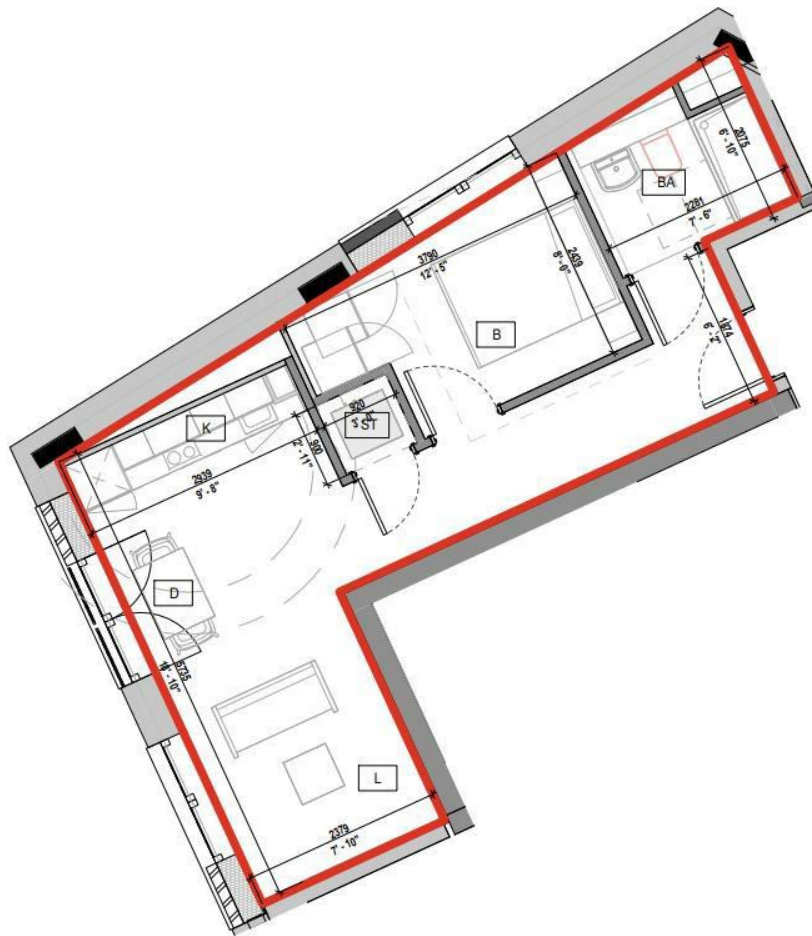
FLAT 209 SPRINGWELL GARDENS, WHITEHALL ROAD LEEDS, LS12 1FL

£900 PER MONTH

A superb, high-specification one bedroom apartment in Leeds City Centre, just a short walk away from a large variety of fantastic amenities!

MONROE

SELLERS OF THE FINEST HOMES



Energy Efficiency Rating		
	Current	Potential
Very energy efficient - lower running costs		
(92 plus) A		
(81-91) B	86	86
(69-80) C		
(55-68) D		
(39-54) E		
(21-38) F		
(1-20) G		
Not energy efficient - higher running costs		
England & Wales	EU Directive 2002/91/EC	

Agents Note: Whilst every care has been taken to prepare these particulars, they are for guidance purposes only. All measurements are approximate and are for general guidance purposes only and whilst every care has been taken to ensure their accuracy, they should not be relied upon and potential buyers/tenants are advised to recheck the measurements

Monroe Lettings and Property
Management
Whitehall Road
Leeds
LS12 1FJ

0113 350 0866
hello@monroelettings.com
www.monroelettings.com

MONROE

SELLERS OF THE FINEST HOMES