



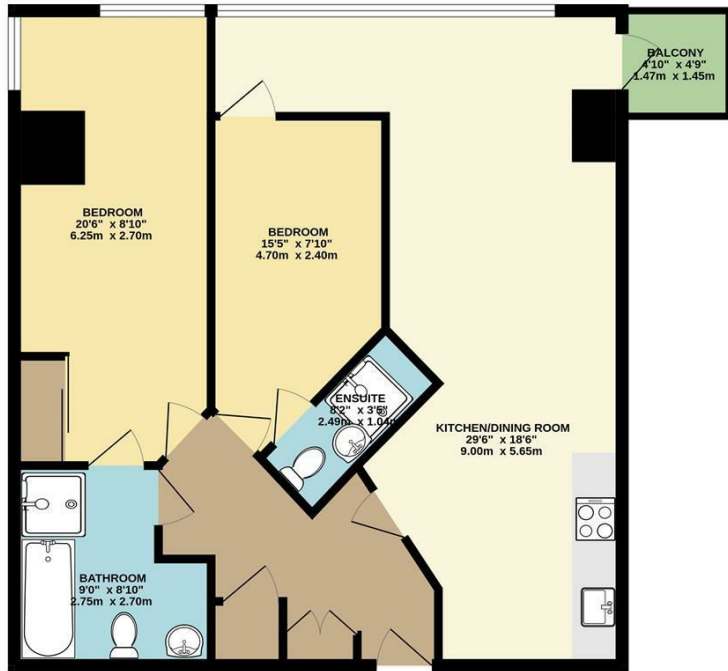
APARTMENT 1507, BRIDGEWATER PLACE WATER LANE
LEEDS, LS11 5QT

£1,200 PER MONTH

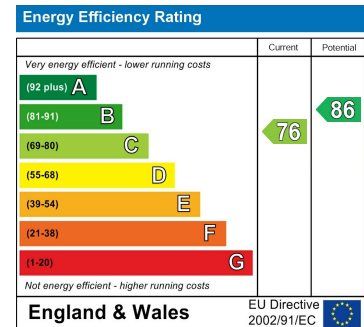
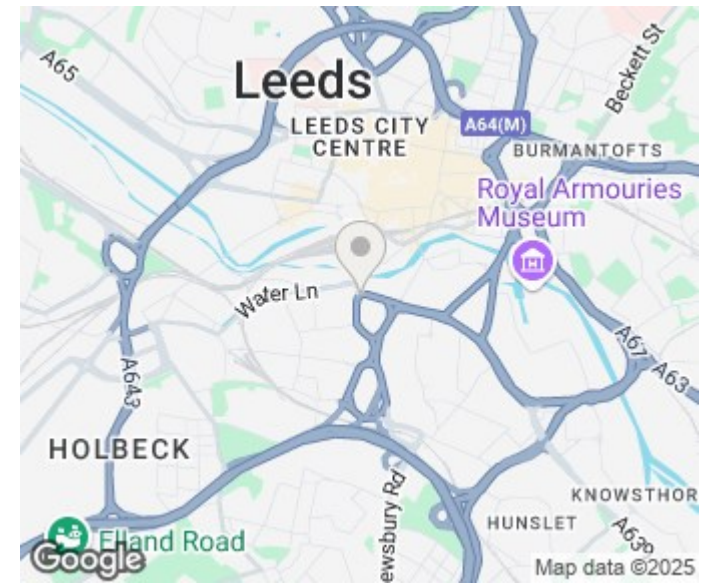
Are you thinking of moving home this May? Move in before 31st May and receive a whopping 50% DISCOUNT from your first two months rent!!

MONROE

SELLERS OF THE FINEST HOMES



TOTAL FLOOR AREA - 809 sq.ft. (75.2 sq.m.) approx.
 Whilst every attempt has been made to ensure the accuracy of the floorplan contained here, measurements of doors, windows, rooms and any other items are approximate and no responsibility is taken for any error, omission or mis-statement. This plan is for illustrative purposes only and should be used as such by any prospective purchaser. The services, systems and appliances shown have not been tested and no guarantee as to their operability or efficiency can be given.
 Made with Metropix i2000.



Agents Note: Whilst every care has been taken to prepare these particulars, they are for guidance purposes only. All measurements are approximate and are for general guidance purposes only and whilst every care has been taken to ensure their accuracy, they should not be relied upon and potential buyers/tenants are advised to recheck the measurements

Monroe Lettings and Property
 Management
 Whitehall Road
 Leeds
 LS12 1FJ

0113 350 0866
 hello@monroelettings.com
 www.monroelettings.com

MONROE

SELLERS OF THE FINEST HOMES