



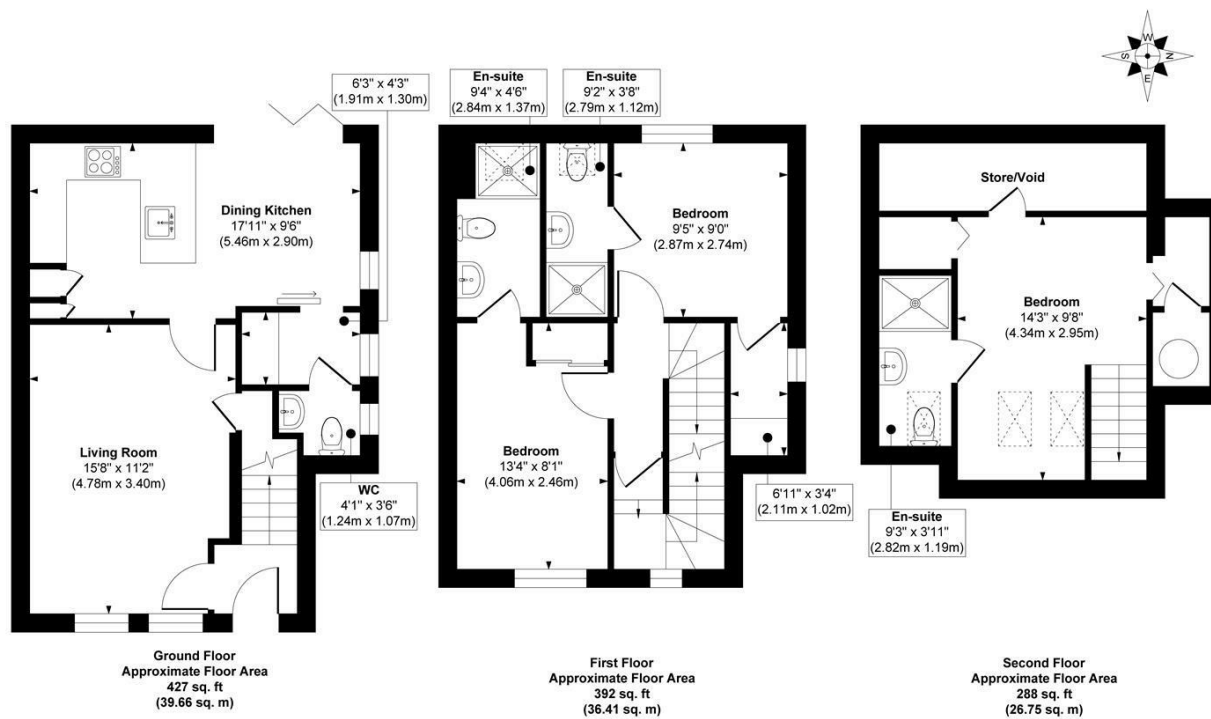
5 CHARLES STREET LEEDS, LS18 4QH

£1,900 PER MONTH

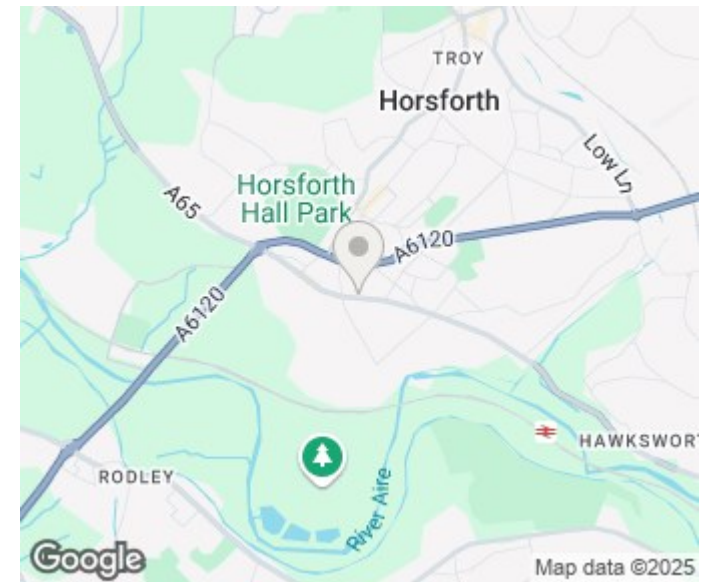
WANT TO RENT THE BEST HOUSE ON THE MARKET IN HORSFORTH ? An amazing 3 bed, 3 bath Brand New End Terraced Property nestled in the heart of Horsforth. The property is super efficient and benefits from a Heat Pump and Electric Car Charger and has space for 2 cars on the drive way and also has a paved garden at the back. This property wont be around for long so call now for a viewing.

MONROE

SELLERS OF THE FINEST HOMES



Approx. Gross Internal Floor Area 1107 sq. ft / 102.82 sq. m
 Illustration for identification purposes only, measurements are approximate, not to scale.
 Copyright © Show Home.



Energy Efficiency Rating		
	Current	Potential
Very energy efficient - lower running costs		
(92 plus) A		93
(81-91) B	84	
(69-80) C		
(55-68) D		
(39-54) E		
(21-38) F		
(1-20) G		
Not energy efficient - higher running costs		
England & Wales	EU Directive 2002/91/EC	

Agents Note: Whilst every care has been taken to prepare these particulars, they are for guidance purposes only. All measurements are approximate and are for general guidance purposes only and whilst every care has been taken to ensure their accuracy, they should not be relied upon and potential buyers/tenants are advised to recheck the measurements

Monroe Lettings and Property
 Management
 Whitehall Road
 Leeds
 LS12 1FJ

0113 350 0866
 hello@monroeleettings.com
 www.monroeleettings.com

MONROE

SELLERS OF THE FINEST HOMES