

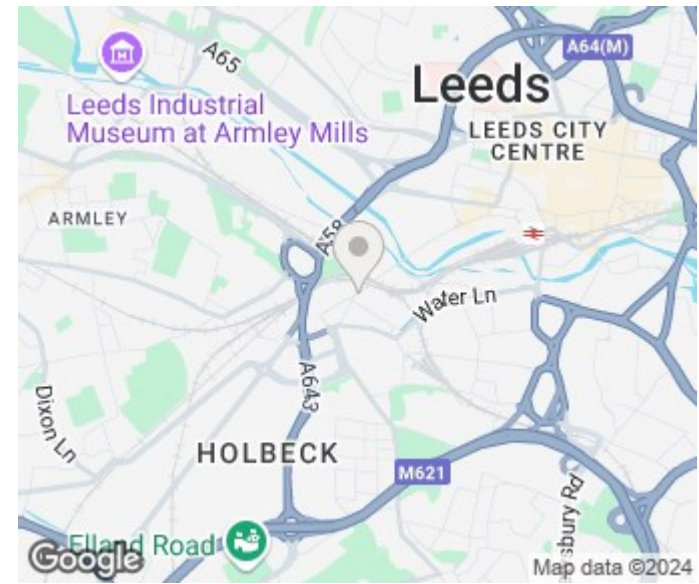
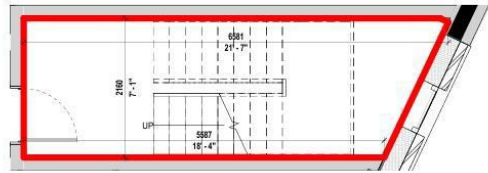
SPRINGWELL GARDENS, WHITEHALL ROAD LEEDS, LS12 1FL

£6,000 PER MONTH

Welcome to Springwell Gardens, where modern living meets brand new luxury. Monroe proudly presents a stunning 3-bedroom triplex penthouse apartment with three expansive terraces, offering panoramic views that stretch across the entire Leeds skyline. Fully furnished and available now, this exceptional residence embodies the pinnacle of sophisticated urban living.

MONROE

SELLERS OF THE FINEST HOMES



Springwell Gardens
Apartment - A1403



Energy Efficiency Rating		Current	Potential
Very energy efficient - lower running costs			
(92 plus) A		87	87
(81-91) B			
(69-80) C			
(55-68) D			
(39-54) E			
(21-38) F			
(1-20) G			
Not energy efficient - higher running costs			
England & Wales		EU Directive 2002/91/EC	

Note: Apartment Area and dimensions subject to Detailed Design and Construction tolerances

Agents Note: Whilst every care has been taken to prepare these particulars, they are for guidance purposes only. All measurements are approximate and are for general guidance purposes only and whilst every care has been taken to ensure their accuracy, they should not be relied upon and potential buyers/tenants are advised to recheck the measurements

Monroe Lettings and Property
Management
Springwell Gardens Leeds
LS12 1AF

0113 350 0866
hello@monroelettings.com

MONROE

SELLERS OF THE FINEST HOMES