



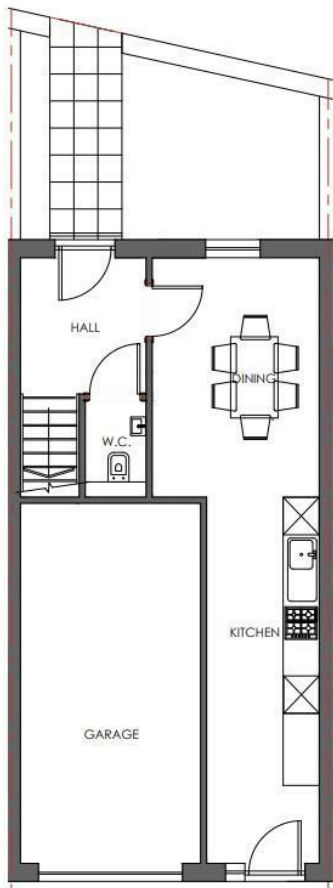
21 VALLEY ROAD
HEBDEN BRIDGE, HX7 7BZ

£425,000
FREEHOLD

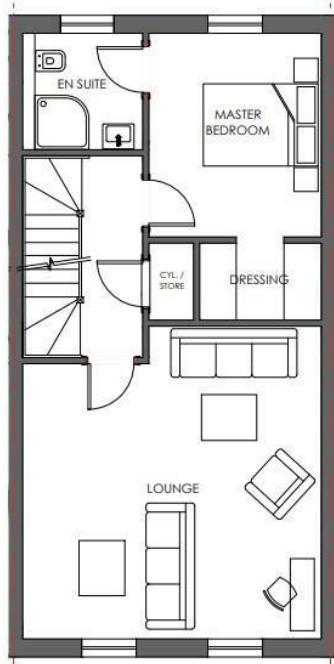
Brand new townhouse with garage, four bedrooms and amazing location in the centre of Hebden Bridge.

MONROE

SELLERS OF THE FINEST HOMES



PLOT 9 GROUND FLOOR LAYOUT
SCALE 1:75 @ A3



PLOT 9 FIRST FLOOR LAYOUT
SCALE 1:75 @ A3



PLOT 9 SECOND FLOOR LAYOUT
SCALE 1:75 @ A3



Agents Note: Whilst every care has been taken to prepare these particulars, they are for guidance purposes only. All measurements are approximate and are for general guidance purposes only and whilst every care has been taken to ensure their accuracy, they should not be relied upon and potential buyers/tenants are advised to recheck the measurements

Leeds City Centre
Springwell Gardens Leeds
LS12 1AF

0113 350 0866
citycentre@monroestateagents.com

MONROE

SELLERS OF THE FINEST HOMES