



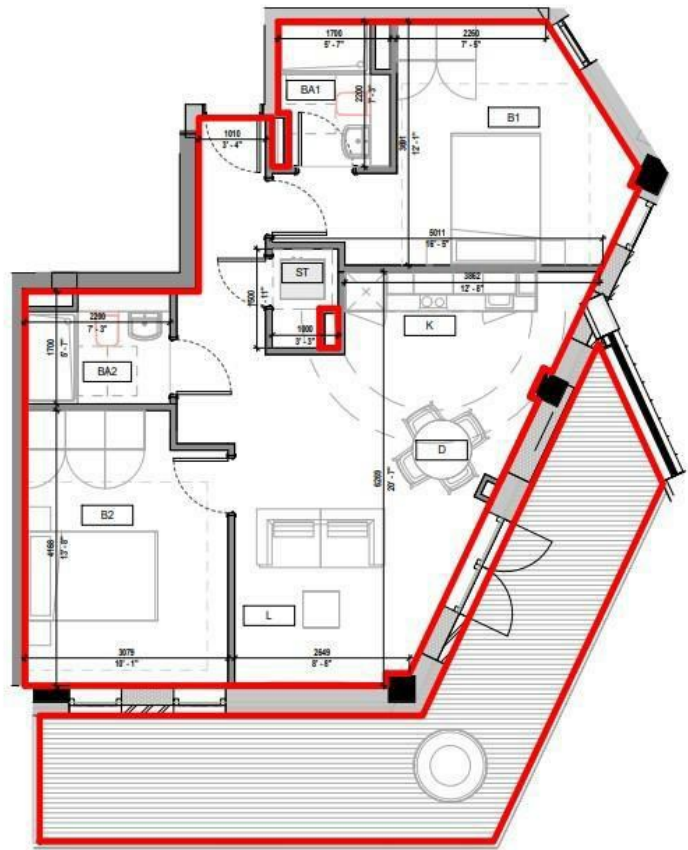
FLAT 19 SPRINGWELL GARDENS, WHITEHALL ROAD  
LEEDS, LS12 1FG

£360,000  
LEASEHOLD

BRAND NEW TWO BEDROOM APARTMENT WITH 261 SQFT PRIVATE TERRACE WITH VIEWS OF THE CITY AND COMMUNAL GARDENS.

MONROE

SELLERS OF THE FINEST HOMES



Note: Apartment Area and dimensions subject to Detailed Design and Construction tolerances



Energy Efficiency Rating		
	Current	Potential
Very energy efficient - lower running costs		
(92 plus) <b>A</b>		
(81-91) <b>B</b>	<b>87</b>	<b>87</b>
(69-80) <b>C</b>		
(55-68) <b>D</b>		
(39-54) <b>E</b>		
(21-38) <b>F</b>		
(1-20) <b>G</b>		
Not energy efficient - higher running costs		
<b>England &amp; Wales</b>	EU Directive 2002/91/EC	

Agents Note: Whilst every care has been taken to prepare these particulars, they are for guidance purposes only. All measurements are approximate and are for general guidance purposes only and whilst every care has been taken to ensure their accuracy, they should not be relied upon and potential buyers/tenants are advised to recheck the measurements

Leeds City Centre  
Springwell Gardens Leeds  
LS12 1AF

0113 350 0866  
citycentre@monroestateagents.com

MONROE

SELLERS OF THE FINEST HOMES