

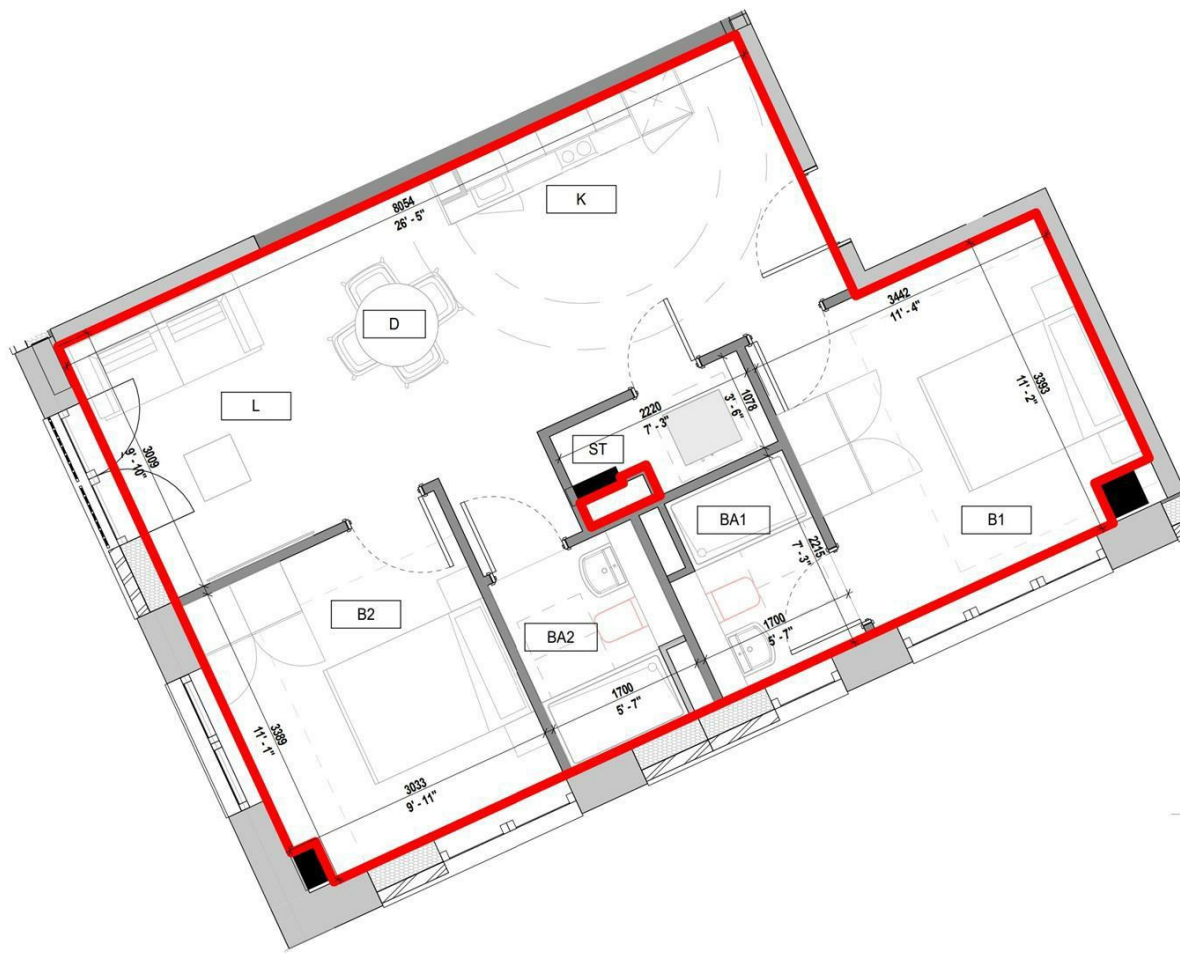
223 WHITEHALL ROAD  
LEEDS, LS12 1FL

£355,000  
LEASEHOLD

BRAND NEW TWO BEDROOM APARTMENT IN SPRINGWELL GARDENS ON WHITEHALL ROAD. AVAILABLE ON A 999 YEAR LONG LEASEHOLD INTEREST!

MONROE

SELLERS OF THE FINEST HOMES



Energy Efficiency Rating		
	Current	Potential
Very energy efficient - lower running costs		
(92 plus) <b>A</b>		
(81-91) <b>B</b>	<b>87</b>	<b>87</b>
(69-80) <b>C</b>		
(55-68) <b>D</b>		
(39-54) <b>E</b>		
(21-38) <b>F</b>		
(1-20) <b>G</b>		
Not energy efficient - higher running costs		
<b>England &amp; Wales</b>	EU Directive 2002/91/EC	

Agents Note: Whilst every care has been taken to prepare these particulars, they are for guidance purposes only. All measurements are approximate and are for general guidance purposes only and whilst every care has been taken to ensure their accuracy, they should not be relied upon and potential buyers/tenants are advised to recheck the measurements

Leeds City Centre  
Springwell Gardens Holbeck Leeds  
LS12 1AF

citycentre@monroestateagents.com

MONROE

SELLERS OF THE FINEST HOMES