



## 182 WHITEHALL ROAD

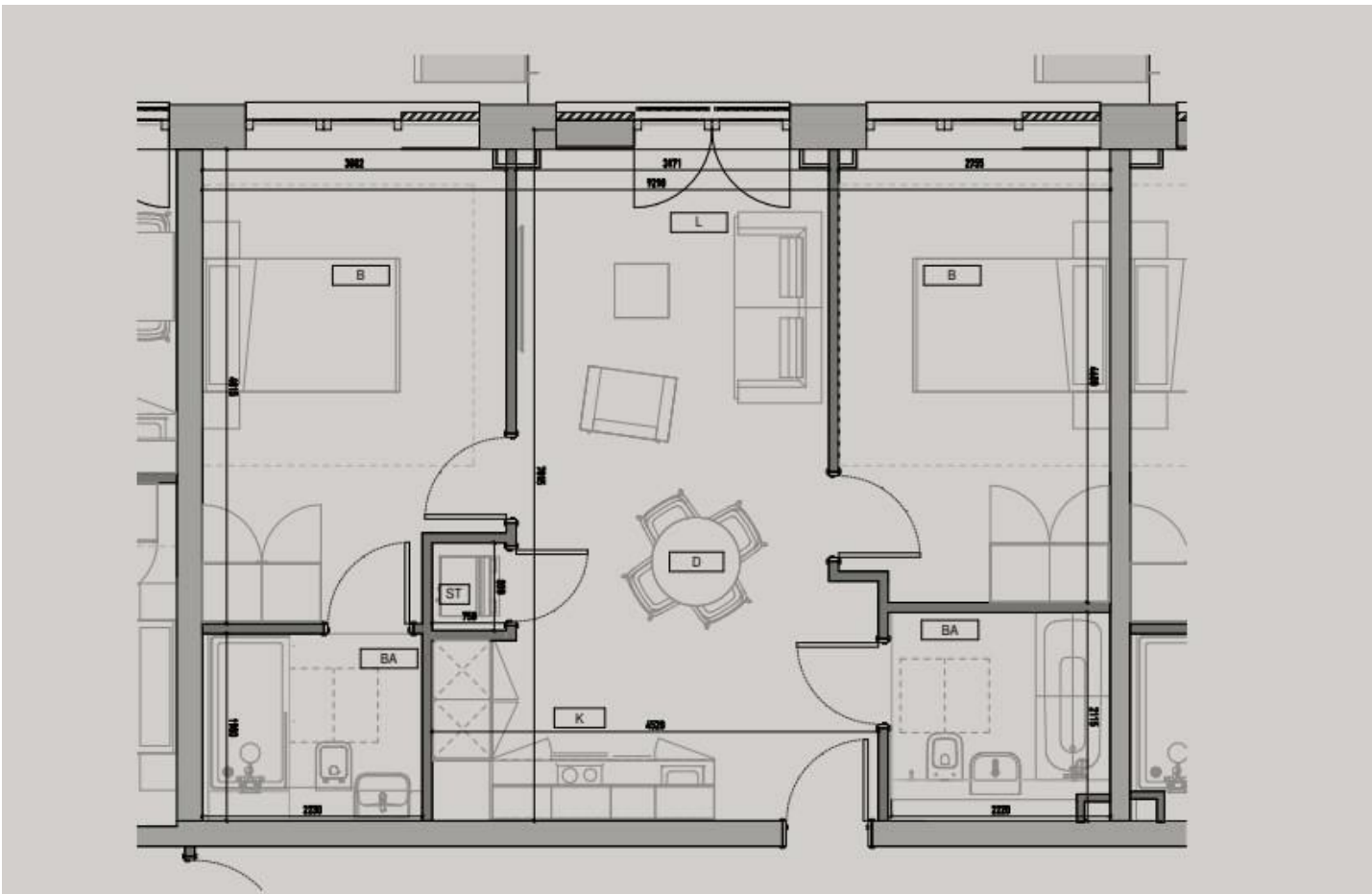
LEEDS, LS12 1AW

£395,000  
LEASEHOLD

Introducing Springwell Gardens... This new and exciting development offers a life of luxury right in the Centre of Leeds City including high-specification apartments with stylish interiors, thoughtfully designed, functional communal spaces and exclusive terraces. Further information and wider availability is available upon request through Monroe.

MONROE

SELLERS OF THE FINEST HOMES



Agents Note: Whilst every care has been taken to prepare these particulars, they are for guidance purposes only. All measurements are approximate and are for general guidance purposes only and whilst every care has been taken to ensure their accuracy, they should not be relied upon and potential buyers/tenants are advised to recheck the measurements

Leeds City Centre  
Springwell Gardens Holbeck Leeds  
LS12 1AF

[citycentre@monroestateagents.com](mailto:citycentre@monroestateagents.com)

MONROE

SELLERS OF THE FINEST HOMES