



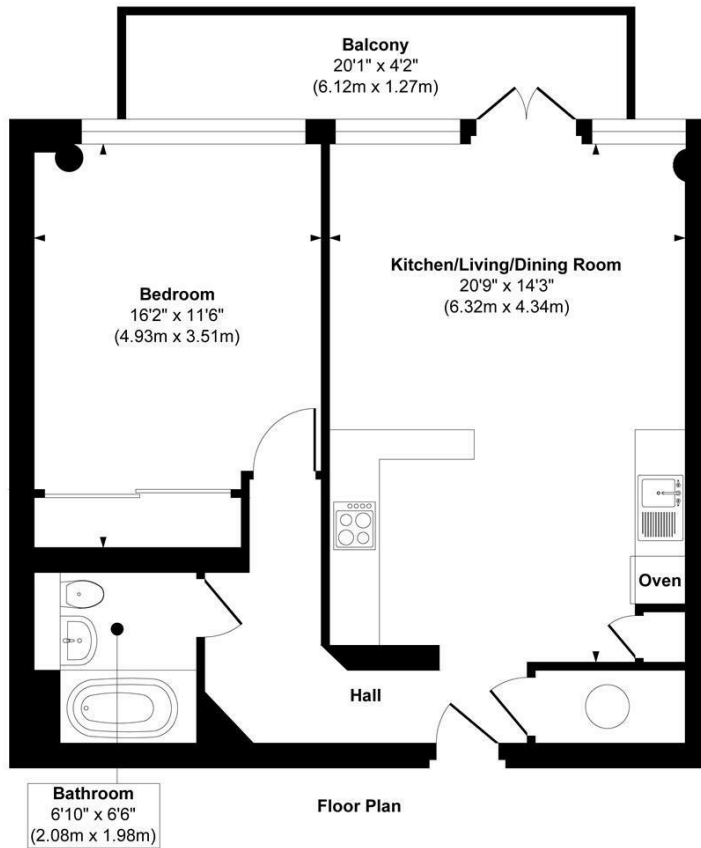
3004 WATER LANE
LEEDS, LS11 5QB

£1,650 PER MONTH

Experience luxury living at new heights in Leeds' most iconic penthouse!

MONROE

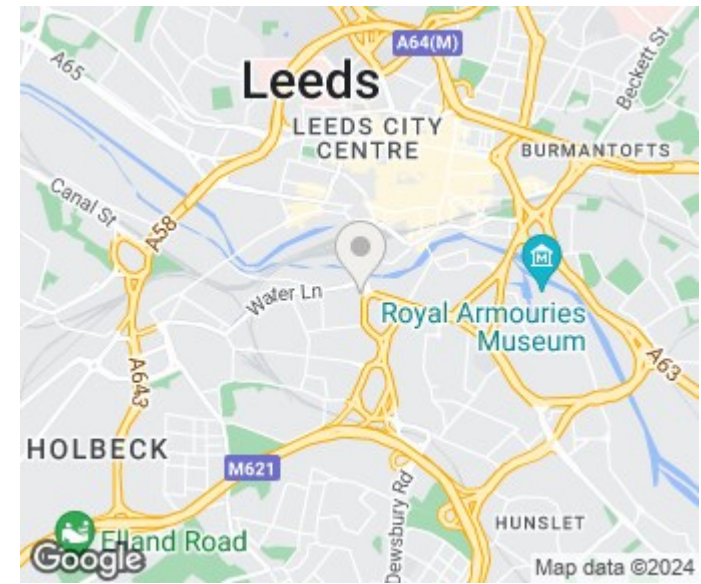
SELLERS OF THE FINEST HOMES



Approx. Gross Internal Floor Area 626 sq. ft / 58.15 sq. m

Illustration for identification purposes only, measurements are approximate, not to scale.

Copyright © Zenith Creations.



Energy Efficiency Rating		
	Current	Potential
Very energy efficient - lower running costs		
(92 plus) A		
(81-91) B	81	85
(69-80) C		
(55-68) D		
(39-54) E		
(21-38) F		
(1-20) G		
Not energy efficient - higher running costs		
England & Wales	EU Directive 2002/91/EC	

Agents Note: Whilst every care has been taken to prepare these particulars, they are for guidance purposes only. All measurements are approximate and are for general guidance purposes only and whilst every care has been taken to ensure their accuracy, they should not be relied upon and potential buyers/tenants are advised to recheck the measurements

Monroe Lettings
Springwell Gardens Holbeck Leeds
LS12 1AF

hello@monroestateagents.com

MONROE

SELLERS OF THE FINEST HOMES